

## Quarter 3 Update for FY 2023-2024

MAP NUMBER	PROJECT NAME	PROJECT DESCRIPTION	PROJECT TYPE	CONSULTANT	FISCAL YEAR TOTAL	CONTRACT TOTAL	PROJECT STATUS
209	DiCapri Condos	61 condo units	IS/MND	MIG, Inc	\$83,184	\$83,184	Complete
219	Home2Suites hotel	106 rooms	IS/MND + amendment	Rick Engineering	\$80,200	\$80,200	In Review
10	Cimarron Ridge SP	756 residential units	EIR Addendum	Kimley-Horn & Associates, Inc	\$65,800	\$65,800	Complete
189, 191, 197	Compass Northern Gateway	5 warehouses	EIR Amendment	Kimley-Horn & Associates, Inc	\$79,850	\$546,415*	In Review
213	Salt Creek TTM 38625	319 residential units	IS/MND Amendments	FirstCarbon Solutions	\$62,490	\$198,020*	In Review
9	Menifee Valley SP	Mixed use, 1,711 residential units	EIR Amendments	LSA Associates, Inc	\$289,000	\$1,143,754*	Complete
180	Villagio Apartments	24 apartment units	IS/MND Amendment	Matthew Fagan Consulting, Inc	\$2,000	\$63,450*	In Review
196	ARES Warehouse	Warehouse	EIR Amendment	EPD Solutions, Inc	\$20,500	\$356,558*	In Review
201	Double Butte	Utility-scale BESS	IS/MND Amendments	Dudek	\$5,750	\$86,745*	In Review
1	Capstone Industrial	Warehouse	EIR Amendment	Kimley-Horn & Associates, Inc	\$8,700	\$407,370*	In Review
193	Menifee Commerce Center	Warehouse	EIR Amendment	Kimley-Horn & Associates, Inc	\$13,900	\$430,225*	In Review
217	Ethanac Business Center	Warehouse	IS/MND	Kimley-Horn & Associates, Inc	\$182,500	\$182,500	In Review
211	Garbani North TTM 38683	40 residential units	IS/MND	Ascent	\$71,450	\$71,450	In Review
212	Coastline TTM 38525	52 residential units	IS/MND	Rincon Consultants, Inc	\$74,785	\$74,785	In Review
220	Oak Hills West TTM 38652	37 residential units	IS/MND	Chambers Group	\$61,675	\$61,675	In Review
222	Garbani & Evans TTM 38766	66 residential units	IS/MND	Michael Baker International Corp	\$112,860	\$112,860	In Review

MAP NUMBER	PROJECT NAME	PROJECT DESCRIPTION	PROJECT TYPE	CONSULTANT	FISCAL YEAR TOTAL	CONTRACT TOTAL	PROJECT STATUS
-	Economic Development Corridor – Northern Gateway**	Trucking access analysis	Master Circulation Plan Study	Kimley-Horn & Associates, Inc	\$124,750	\$124,750	In Review
	<b>Total:</b>					<b>\$1,339,394</b>	

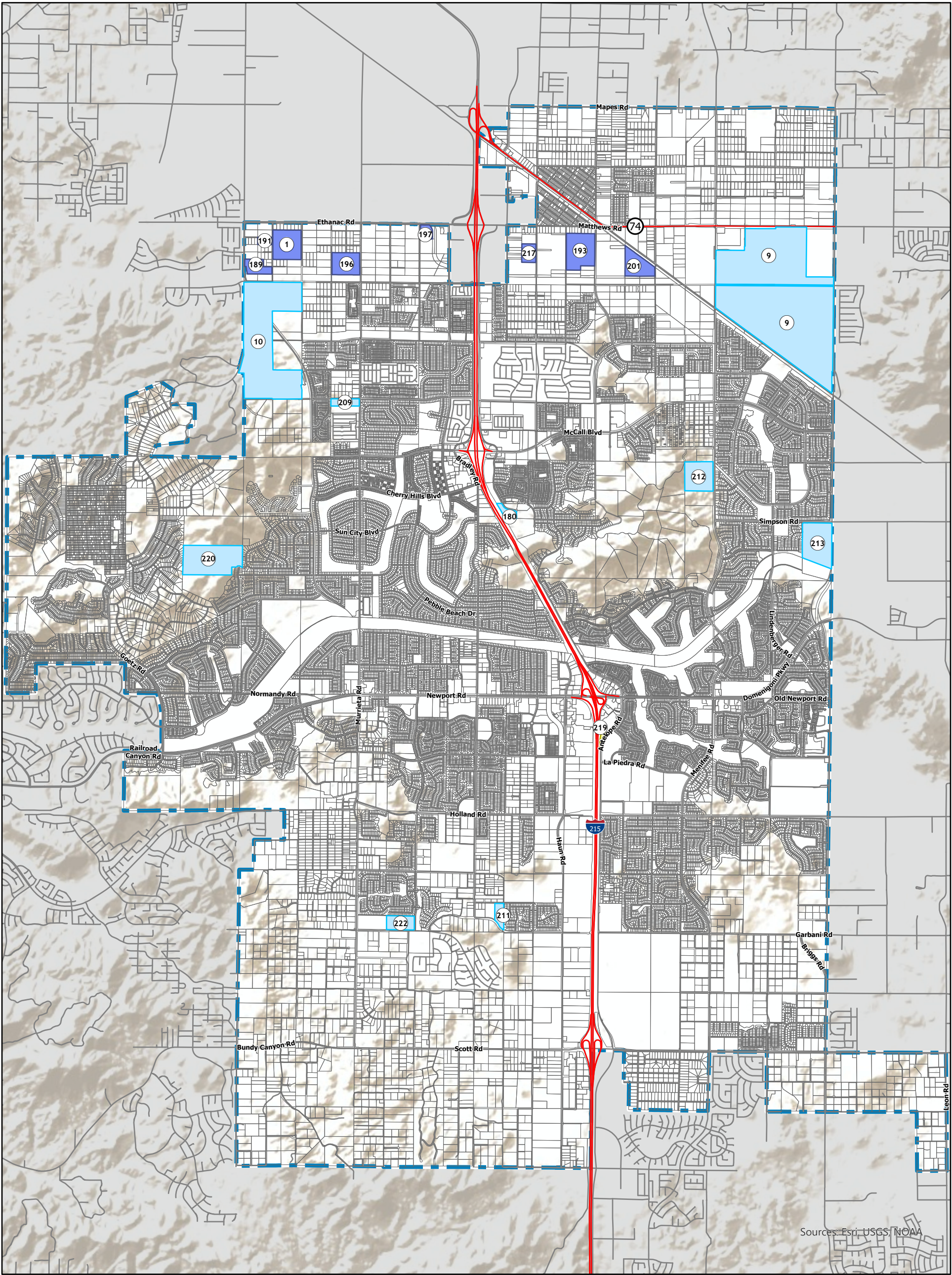
\*Denotes contract totals with funds rolled from previous fiscal years.

\*\* City-initiated traffic analysis study in agreement with City of Perris



# Projects Undergoing California Environmental Quality Act Review

As of March 2024



**Project Type**

- Residential
- Mixed Use
- Commercial
- Industrial



**MENIFEE**  
New. Better. Best.



0 0.5 1 Miles