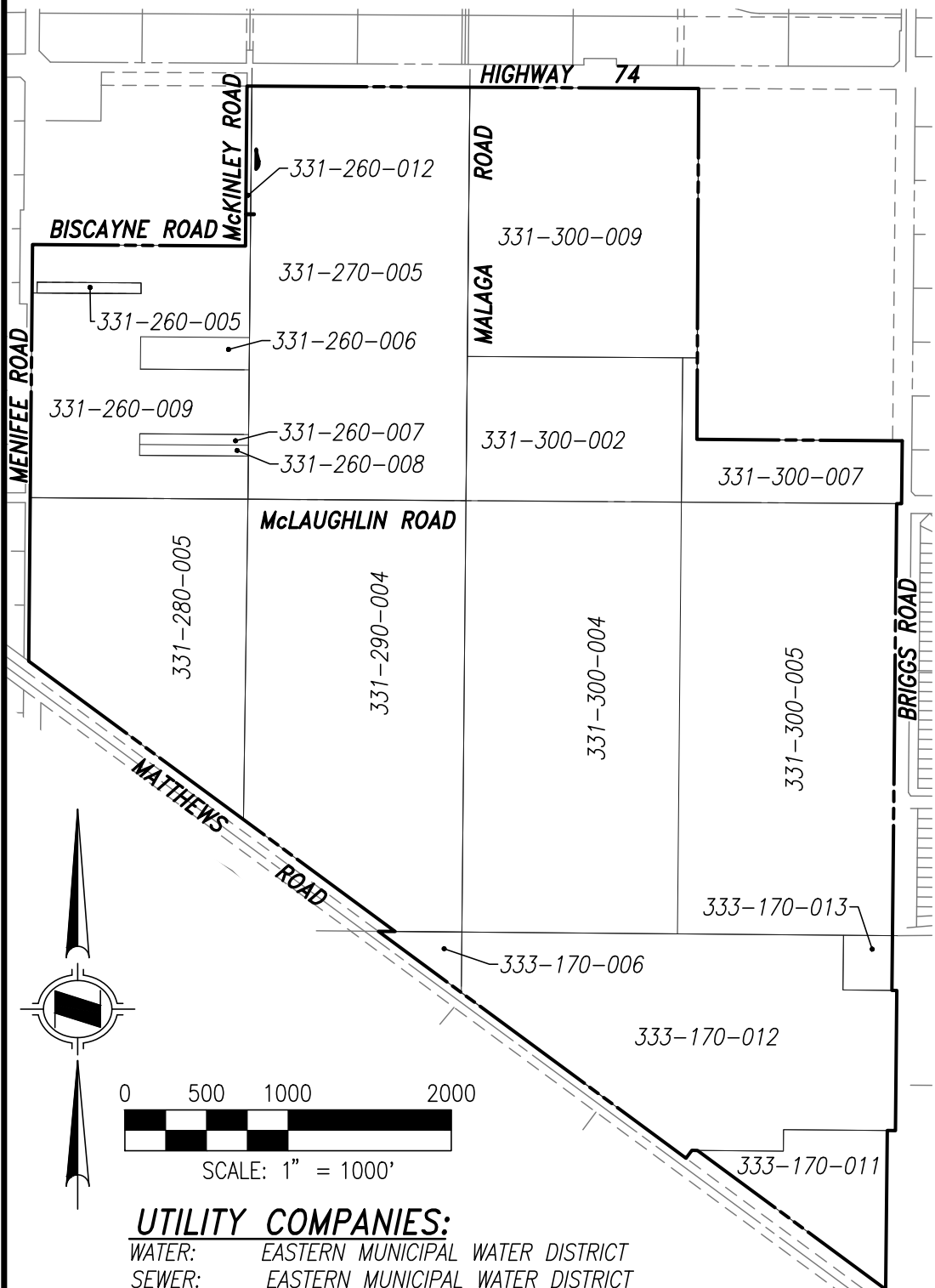


CHANGE OF ZONE



**UTILITY COMPANIES:**  
WATER: EASTERN MUNICIPAL WATER DISTRICT  
SEWER: EASTERN MUNICIPAL WATER DISTRICT  
ELECTRIC: SOUTHERN CALIFORNIA EDISON  
GAS: SOUTHERN CALIFORNIA GAS CO.  
TRASH: WASTE MANAGEMENT  
TELEPHONE: VERIZON COMMUNICATIONS  
CABLE T.V.: TIME WARNER CABLE

**SCHOOL DISTRICT:**  
PERRIS UNION HIGH SCHOOL DISTRICT  
& ROMOLAND SCHOOL DISTRICT

**OWNER/APPLICANT:**  
COMPANY: MINOR RANCH LLC  
CONTACT: SHAUN BOWEN  
ADDRESS: 3200 PARK CENTER DRIVE, SUITE 1000  
COSTA MESA, CA 92626  
PHONE: (714) 427-6868  
EMAIL: SHAUN.BOWEN@BROOKFIELDPROPERTIESDEVELOPMENT.COM

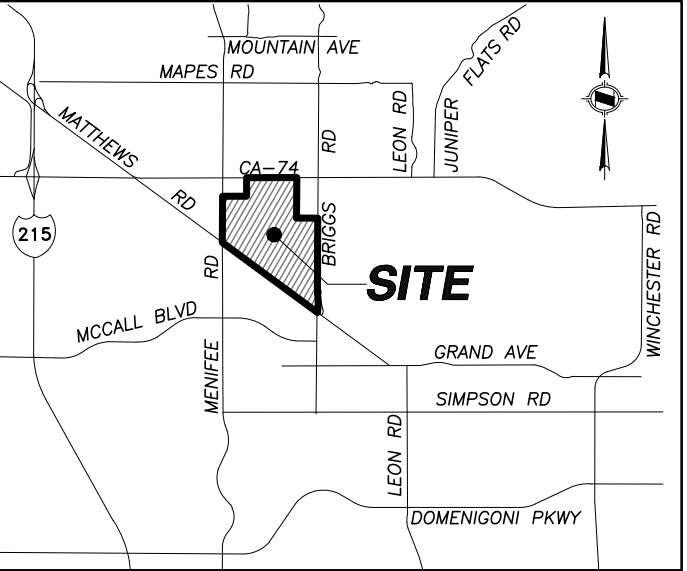
**EXHIBIT PREPARER ENGINEER:**  
COMPANY: HUNSAKER & ASSOCIATES  
CONTACT: BRAD HAY  
ADDRESS: 2900 ADAMS STREET, SUITE A-15  
RIVERSIDE, CA 92505  
PHONE: (951) 352-7200  
FAX: (951) 352-8269

**NOTES:**  
THE PROJECT SITE IS IN OR PARTIALLY WITHIN LAKEVIEW/NUEVO/ROMOLAND/HOMELAND #146 COUNTY SERVICE AREA

**PROJECT DESCRIPTION**  
GENERAL PLAN AMENDMENT TO CHANGE GENERAL PLAN LAND USE DESIGNATION OF SUBJECT PARCELS FROM MENIFEE VALLEY RANCH SPECIFIC PLAN TO MENIFEE VALLEY SPECIFIC PLAN


**LEGAL DESCRIPTION:**  
REFER TO TITLE REPORT ISSUED BY THE FIRST AMERICAN TITLE INSURANCE COMPANY, FILE NO. OSA-6873667, DATED DECEMBER 13, 2022.

NO	ASSESSOR PARCEL NUMBER	GROSS S.F.	GROSS A.C.	EXISTING ZONING	PROPOSED ZONING
1	331-260-005	44,048.68	1.011	MENIFEE VALLEY RANCH SPECIFIC PLAN	MENIFEE VALLEY SPECIFIC PLAN
2	331-260-006	132,132.47	3.033	MENIFEE VALLEY RANCH SPECIFIC PLAN	MENIFEE VALLEY SPECIFIC PLAN
3	331-260-007	44,037.43	1.011	MENIFEE VALLEY RANCH SPECIFIC PLAN	MENIFEE VALLEY SPECIFIC PLAN
4	331-260-008	44,036.77	1.011	MENIFEE VALLEY RANCH SPECIFIC PLAN	MENIFEE VALLEY SPECIFIC PLAN
5	331-260-009	1,810,497.43	41.563	MENIFEE VALLEY RANCH SPECIFIC PLAN	MENIFEE VALLEY SPECIFIC PLAN
6	331-260-012	26,804.85	0.615	MENIFEE VALLEY RANCH SPECIFIC PLAN	MENIFEE VALLEY SPECIFIC PLAN
7	331-270-005	3,527,080.27	80.971	MENIFEE VALLEY RANCH SPECIFIC PLAN	MENIFEE VALLEY SPECIFIC PLAN
8	331-280-005	2,022,279.25	46.425	MENIFEE VALLEY RANCH SPECIFIC PLAN	MENIFEE VALLEY SPECIFIC PLAN
9	331-290-004	3259018.35	74.817	MENIFEE VALLEY RANCH SPECIFIC PLAN	MENIFEE VALLEY SPECIFIC PLAN
10	331-300-002	1,166,686.43	26.783	MENIFEE VALLEY RANCH SPECIFIC PLAN	MENIFEE VALLEY SPECIFIC PLAN
11	331-300-004	3,490,866.15	80.139	MENIFEE VALLEY RANCH SPECIFIC PLAN	MENIFEE VALLEY SPECIFIC PLAN
12	331-300-005	3,567,484.35	81.898	MENIFEE VALLEY RANCH SPECIFIC PLAN	MENIFEE VALLEY SPECIFIC PLAN
13	331-300-007	564,696.58	12.964	MENIFEE VALLEY RANCH SPECIFIC PLAN	MENIFEE VALLEY SPECIFIC PLAN
14	331-300-009	2473667.17	56.788	MENIFEE VALLEY RANCH SPECIFIC PLAN	MENIFEE VALLEY SPECIFIC PLAN
15	331-170-006	76,696.75	1.761	MENIFEE VALLEY RANCH SPECIFIC PLAN	MENIFEE VALLEY SPECIFIC PLAN
16	331-170-011	698,469.01	16.035	MENIFEE VALLEY RANCH SPECIFIC PLAN	MENIFEE VALLEY SPECIFIC PLAN
17	331-170-012	2,656,228.86	60.979	MENIFEE VALLEY RANCH SPECIFIC PLAN	MENIFEE VALLEY SPECIFIC PLAN
18	331-170-013	110,763.73	2.543	MENIFEE VALLEY RANCH SPECIFIC PLAN	MENIFEE VALLEY SPECIFIC PLAN
TOTAL			590.347		



VICINITY MAP

DATE	REVISION	COMMENTS	BY



**HUNSAKER & ASSOCIATES**  
IRVINE, INC  
INLAND EMPIRE REGION  
2900 ADAMS STREET, SUITE A-15  
RIVERSIDE CA 92504 (951)352-7200  
PLANNING/ENGINEERING/SURVEYING/GOVERNMENT RELATIONS

DATE: 11/15/23

W.O.: 1873-183