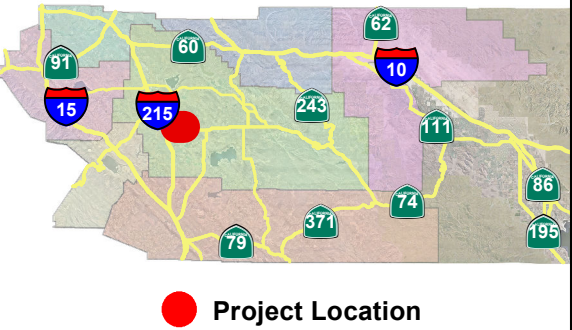


LOCATION MAP





VICINITY MAP

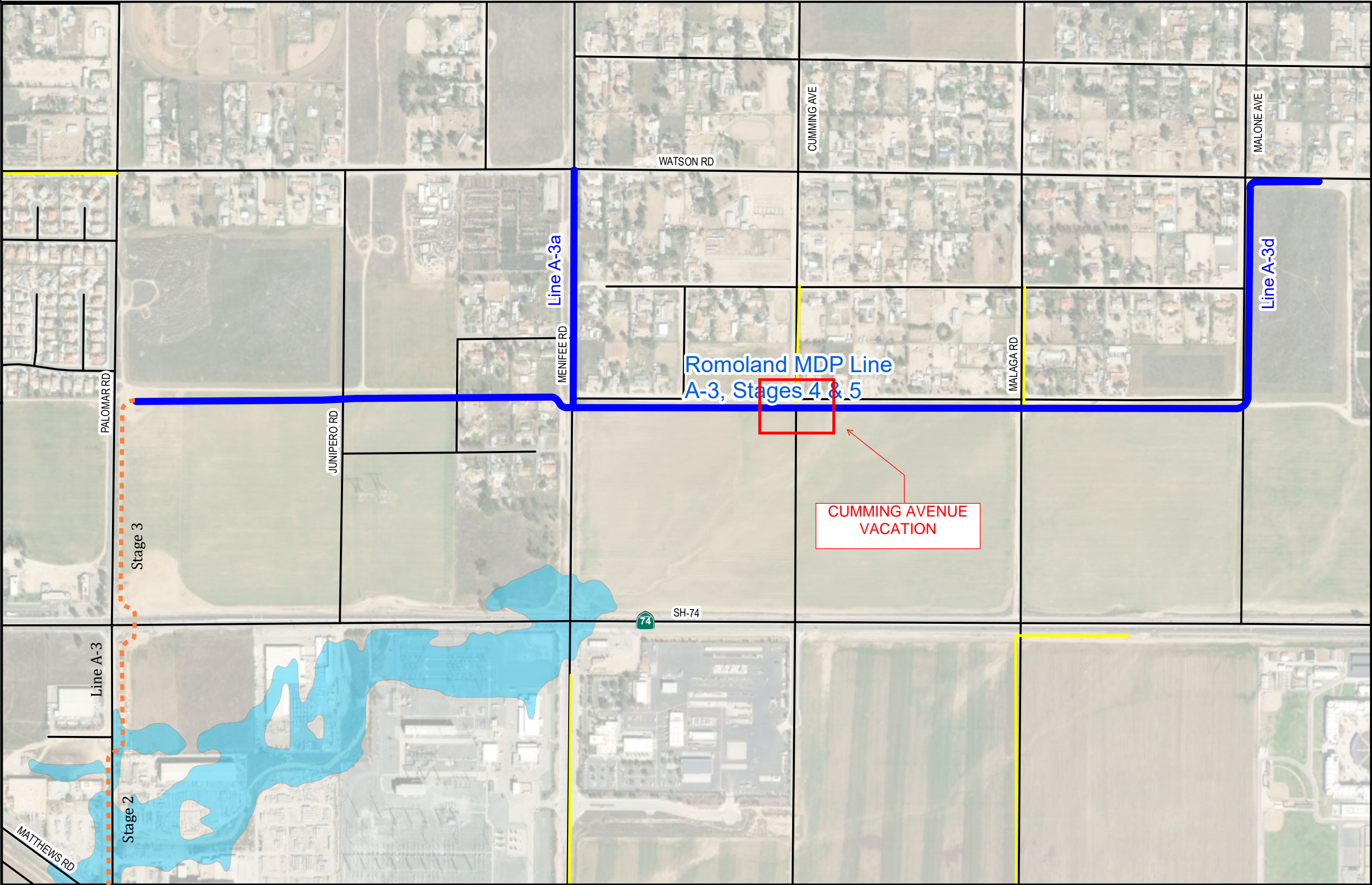
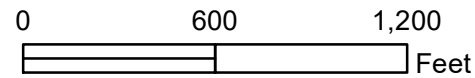


Description

This District-led project will complete the Line A-3 storm drain system along Varela Lane east from Palomar Road to Malone Avenue. The project will collect runoff generated north of Varela Lane and convey it west along Varela Lane in an open channel from Malone Avenue to Menifee Road. Runoff is then conveyed in an underground storm drain across Menifee Road to the connection with Stage 3 on Palomar Road. This project also includes laterals A-3a and A-3d on Menifee Road and Malone Avenue. The total length of this project is approximately 10,220 feet of underground reinforced concrete box/pipe and open channel. Once this project is complete, the system will help protect properties located along Varela Lane and east of Palomar Road. The District will be responsible for operation and maintenance of the facility.

Legend

-  Romoland MDP Line A-3, Stages 4 & 5
-  Un-budgeted District Facilities
-  FEMA Floodplain
-  Existing Line A-3, Stages 2 & 3



RIVERSIDE COUNTY FLOOD CONTROL & WATER CONSERVATION DISTRICT
Romoland MDP Line A-3, Stages 4 & 5
Supervisory District 3



Project No.	4-8-00431-04
Engineer	E. Angelov
Date Created	6/4/2024

