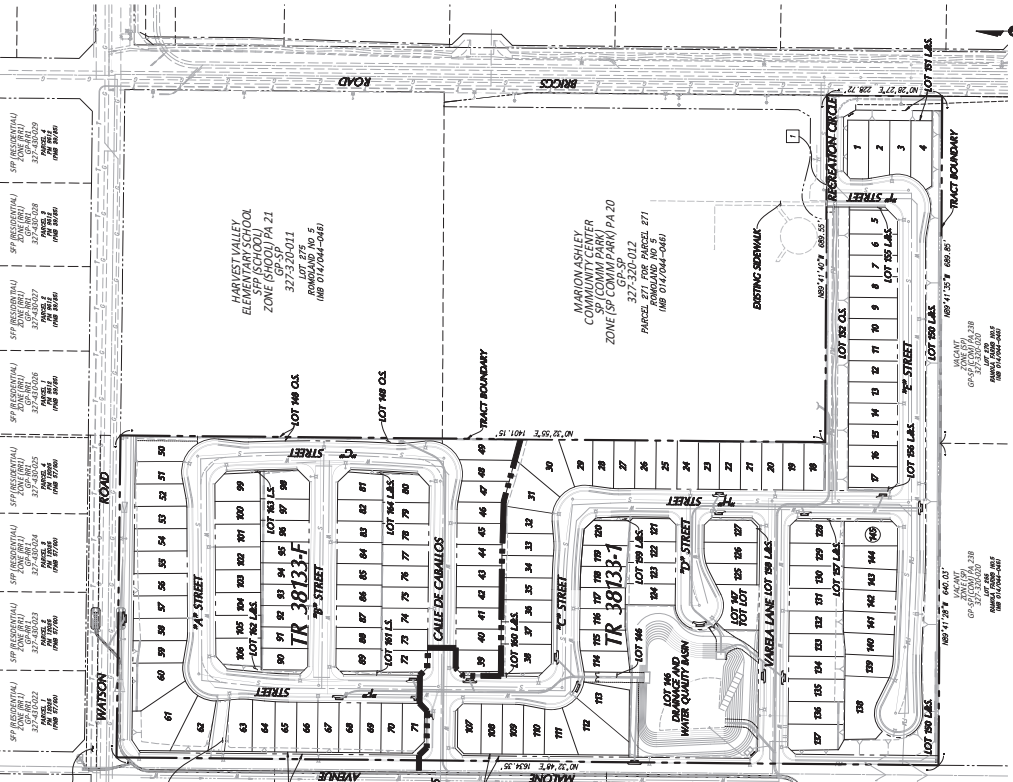


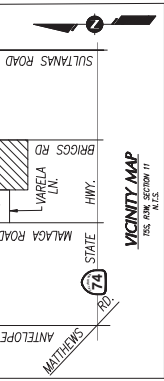
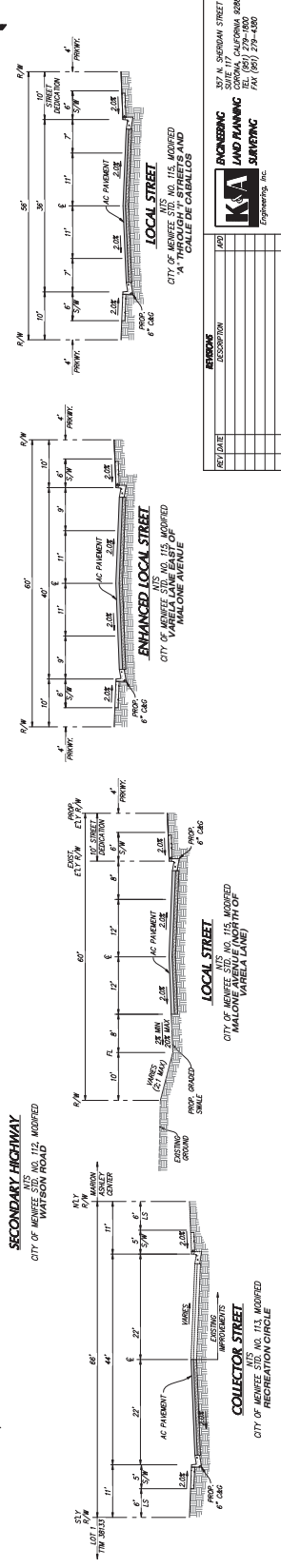
# TENTATIVE TRACT MAP NO. 38133 CITY OF MENIFEE

LOTS 261, 262, 263, 264, 265 AND A PORTION OF LOT 271 OF ROMOLA NO. 5, IN THE COUNTY OF RIVERSIDE, STATE OF CALIFORNIA.

TRACT NO. 38133 CONT.		TRACT NO. 38133 CONT.	
LOT NO.	ACRES	LOT NO.	ACRES
1	4.077	51	4.077
2	4.077	52	4.077
3	4.077	53	4.077
4	4.077	54	4.077
5	4.077	55	4.077
6	4.077	56	4.077
7	4.077	57	4.077
8	4.077	58	4.077
9	4.077	59	4.077
10	4.077	60	4.077
11	4.077	61	4.077
12	4.077	62	4.077
13	4.077	63	4.077
14	4.077	64	4.077
15	4.077	65	4.077
16	4.077	66	4.077
17	4.077	67	4.077
18	4.077	68	4.077
19	4.077	69	4.077
20	4.077	70	4.077
21	4.077	71	4.077
22	4.077	72	4.077
23	4.077	73	4.077
24	4.077	74	4.077
25	4.077	75	4.077
26	4.077	76	4.077
27	4.077	77	4.077
28	4.077	78	4.077
29	4.077	79	4.077
30	4.077	80	4.077
31	4.077	81	4.077
32	4.077	82	4.077
33	4.077	83	4.077
34	4.077	84	4.077
35	4.077	85	4.077
36	4.077	86	4.077
37	4.077	87	4.077
38	4.077	88	4.077
39	4.077	89	4.077
40	4.077	90	4.077
41	4.077	91	4.077
42	4.077	92	4.077
43	4.077	93	4.077
44	4.077	94	4.077
45	4.077	95	4.077
46	4.077	96	4.077
47	4.077	97	4.077
48	4.077	98	4.077
49	4.077	99	4.077
50	4.077	100	4.077
51	4.077	101	4.077
52	4.077	102	4.077
53	4.077	103	4.077
54	4.077	104	4.077
55	4.077	105	4.077
56	4.077	106	4.077
57	4.077	107	4.077
58	4.077	108	4.077
59	4.077	109	4.077
60	4.077	110	4.077
61	4.077	111	4.077
62	4.077	112	4.077
63	4.077	113	4.077
64	4.077	114	4.077
65	4.077	115	4.077
66	4.077	116	4.077
67	4.077	117	4.077
68	4.077	118	4.077
69	4.077	119	4.077
70	4.077	120	4.077
71	4.077	121	4.077
72	4.077	122	4.077
73	4.077	123	4.077
74	4.077	124	4.077
75	4.077	125	4.077
76	4.077	126	4.077
77	4.077	127	4.077
78	4.077	128	4.077
79	4.077	129	4.077
80	4.077	130	4.077
81	4.077	131	4.077
82	4.077	132	4.077
83	4.077	133	4.077
84	4.077	134	4.077
85	4.077	135	4.077
86	4.077	136	4.077
87	4.077	137	4.077
88	4.077	138	4.077
89	4.077	139	4.077
90	4.077	140	4.077
91	4.077	141	4.077
92	4.077	142	4.077
93	4.077	143	4.077
94	4.077	144	4.077
95	4.077	145	4.077
96	4.077	146	4.077
97	4.077	147	4.077
98	4.077	148	4.077
99	4.077	149	4.077
100	4.077	150	4.077



SITE MAP / PHASING MAP



VICINITY MAP

**ZONING - CURRENT**  
MENEFEE NORTH SPECIFIC PLAN (SP) 900  
PLANNING AREA 22 (MNP) AND 23A (MNP)

**ZONING - PROPOSED**  
PROPOSED RESIDENTIAL LOT 145 (RPL) 44  
PLANNING AREA 22 - MNP

**PROPOSED DEVELOPMENT**  
RESIDENTIAL LOTS  
TOTAL AREA - 263.4 AC  
TOTAL LOTS - 145  
TOTAL ACRES - 263.4 AC

**PROPOSED IMPROVEMENT SCHEDULE**  
SCHEDULE "A"

**PROPOSED STORM DRAINS**  
PROPOSED STORM DRAIN SYSTEMS WILL BE INSTALLED IN ACCORDANCE WITH THE CITY OF MENEFEE SPECIFIC PLAN (SP) 900. ALL STORM DRAINS SHALL BE MAINTAINED BY THE CITY OF MENEFEE.

**PROPOSED WATER MAINS**  
PROPOSED WATER MAINS WILL BE INSTALLED IN ACCORDANCE WITH THE CITY OF MENEFEE SPECIFIC PLAN (SP) 900. ALL WATER MAINS SHALL BE MAINTAINED BY THE CITY OF MENEFEE.

**PROPOSED SEWER MAINS**  
PROPOSED SEWER MAINS WILL BE INSTALLED IN ACCORDANCE WITH THE CITY OF MENEFEE SPECIFIC PLAN (SP) 900. ALL SEWER MAINS SHALL BE MAINTAINED BY THE CITY OF MENEFEE.

**PROPOSED GAS MAINS**  
PROPOSED GAS MAINS WILL BE INSTALLED IN ACCORDANCE WITH THE CITY OF MENEFEE SPECIFIC PLAN (SP) 900. ALL GAS MAINS SHALL BE MAINTAINED BY THE CITY OF MENEFEE.

**PROPOSED TRAIL**  
PROPOSED TRAIL WILL BE INSTALLED IN ACCORDANCE WITH THE CITY OF MENEFEE SPECIFIC PLAN (SP) 900. ALL TRAILS SHALL BE MAINTAINED BY THE CITY OF MENEFEE.

**PROPOSED PARKING**  
PROPOSED PARKING WILL BE INSTALLED IN ACCORDANCE WITH THE CITY OF MENEFEE SPECIFIC PLAN (SP) 900. ALL PARKING SHALL BE MAINTAINED BY THE CITY OF MENEFEE.

**PROPOSED LANDSCAPING**  
PROPOSED LANDSCAPING WILL BE INSTALLED IN ACCORDANCE WITH THE CITY OF MENEFEE SPECIFIC PLAN (SP) 900. ALL LANDSCAPING SHALL BE MAINTAINED BY THE CITY OF MENEFEE.

**PROPOSED UTILITIES**  
PROPOSED UTILITIES WILL BE INSTALLED IN ACCORDANCE WITH THE CITY OF MENEFEE SPECIFIC PLAN (SP) 900. ALL UTILITIES SHALL BE MAINTAINED BY THE CITY OF MENEFEE.

**PROPOSED FLOOD PROTECTION**  
PROPOSED FLOOD PROTECTION WILL BE INSTALLED IN ACCORDANCE WITH THE CITY OF MENEFEE SPECIFIC PLAN (SP) 900. ALL FLOOD PROTECTION SHALL BE MAINTAINED BY THE CITY OF MENEFEE.

**PROPOSED EROSION CONTROL**  
PROPOSED EROSION CONTROL WILL BE INSTALLED IN ACCORDANCE WITH THE CITY OF MENEFEE SPECIFIC PLAN (SP) 900. ALL EROSION CONTROL SHALL BE MAINTAINED BY THE CITY OF MENEFEE.

**PROPOSED TRAIL**  
PROPOSED TRAIL WILL BE INSTALLED IN ACCORDANCE WITH THE CITY OF MENEFEE SPECIFIC PLAN (SP) 900. ALL TRAILS SHALL BE MAINTAINED BY THE CITY OF MENEFEE.

**PROPOSED PARKING**  
PROPOSED PARKING WILL BE INSTALLED IN ACCORDANCE WITH THE CITY OF MENEFEE SPECIFIC PLAN (SP) 900. ALL PARKING SHALL BE MAINTAINED BY THE CITY OF MENEFEE.

**PROPOSED LANDSCAPING**  
PROPOSED LANDSCAPING WILL BE INSTALLED IN ACCORDANCE WITH THE CITY OF MENEFEE SPECIFIC PLAN (SP) 900. ALL LANDSCAPING SHALL BE MAINTAINED BY THE CITY OF MENEFEE.

**PROPOSED UTILITIES**  
PROPOSED UTILITIES WILL BE INSTALLED IN ACCORDANCE WITH THE CITY OF MENEFEE SPECIFIC PLAN (SP) 900. ALL UTILITIES SHALL BE MAINTAINED BY THE CITY OF MENEFEE.

**PROPOSED FLOOD PROTECTION**  
PROPOSED FLOOD PROTECTION WILL BE INSTALLED IN ACCORDANCE WITH THE CITY OF MENEFEE SPECIFIC PLAN (SP) 900. ALL FLOOD PROTECTION SHALL BE MAINTAINED BY THE CITY OF MENEFEE.

**PROPOSED EROSION CONTROL**  
PROPOSED EROSION CONTROL WILL BE INSTALLED IN ACCORDANCE WITH THE CITY OF MENEFEE SPECIFIC PLAN (SP) 900. ALL EROSION CONTROL SHALL BE MAINTAINED BY THE CITY OF MENEFEE.

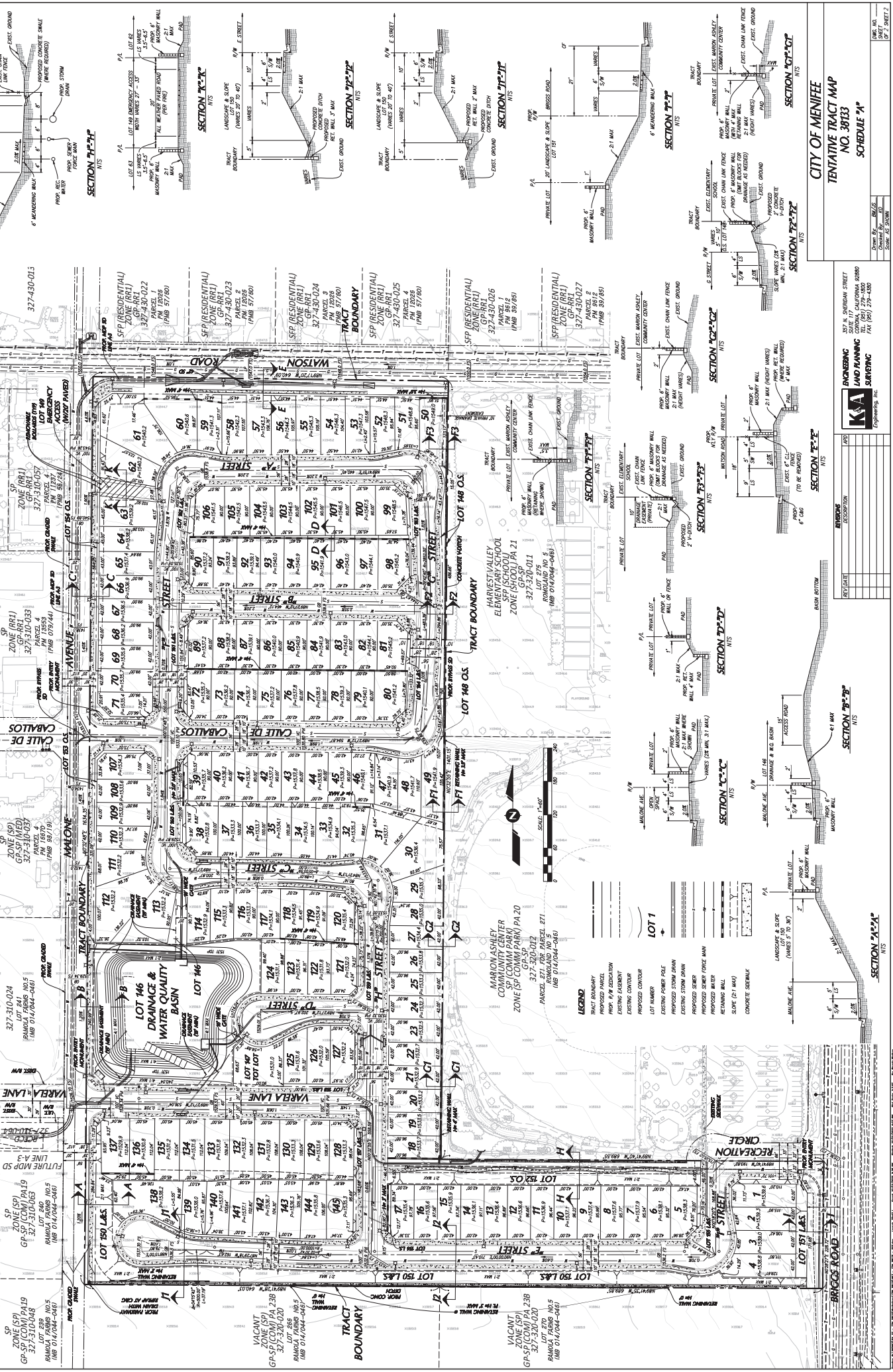
## CITY OF MENIFEE TENTATIVE TRACT MAP NO. 38133 SCHEDULE "A"

REVISION	DESCRIPTION	DATE
1	INITIAL	10/1/2019
2	REVISION	10/1/2019
3	REVISION	10/1/2019
4	REVISION	10/1/2019
5	REVISION	10/1/2019
6	REVISION	10/1/2019
7	REVISION	10/1/2019
8	REVISION	10/1/2019
9	REVISION	10/1/2019
10	REVISION	10/1/2019



# TENTATIVE TRACT MAP NO. 38133 CITY OF MENIFEE

LOTS 261, 262, 263, 264, 265 AND A PORTION OF LOT 271 OF ROMOLA NO. 5, IN THE COUNTY OF RIVERSIDE, STATE OF CALIFORNIA.



**CITY OF MENIFEE**  
**TENTATIVE TRACT MAP**  
**NO. 38133**  
**SCHEDULE "A"**

Drawn by: **KA**  
Checked by: **KA**  
Scale: **AS SHOWN**

**KA**  
**ENGINEERING, INC.**  
307 N. SHERMAN STREET  
CORRAL, CALIFORNIA 92530  
TEL: (951) 279-1330  
FAX: (951) 279-1330

**SECTION "A-A"**  
N.T.S.

**SECTION "B-B"**  
N.T.S.

**SECTION "C-C"**  
N.T.S.

**SECTION "D-D"**  
N.T.S.

**SECTION "E-E"**  
N.T.S.

**SECTION "F-F"**  
N.T.S.

**SECTION "G-G"**  
N.T.S.

**SECTION "H-H"**  
N.T.S.

**SECTION "I-I"**  
N.T.S.

**SECTION "J-J"**  
N.T.S.

**SECTION "K-K"**  
N.T.S.

**SECTION "L-L"**  
N.T.S.

**SECTION "M-M"**  
N.T.S.

**SECTION "N-N"**  
N.T.S.

**SECTION "O-O"**  
N.T.S.

**SECTION "P-P"**  
N.T.S.

**SECTION "Q-Q"**  
N.T.S.

**SECTION "R-R"**  
N.T.S.

**SECTION "S-S"**  
N.T.S.

**SECTION "T-T"**  
N.T.S.

**SECTION "U-U"**  
N.T.S.

**SECTION "V-V"**  
N.T.S.

**SECTION "W-W"**  
N.T.S.

**SECTION "X-X"**  
N.T.S.

**SECTION "Y-Y"**  
N.T.S.

**SECTION "Z-Z"**  
N.T.S.



# COUNTRYSIDE

## MENIFEE, CALIFORNIA

PA 22  
TTM 38133  
NEW SINGLE FAMILY RESIDENTIAL PROJECT  
PLN21-0273 0-2022

**CLIENT:**  
RICHLAND COMMUNITIES  
BRIAN HARDY  
BHARDY@RICHLANDCOMMUNITIES.COM  
949.698.2191

**LANDSCAPE ARCHITECT:**  
BRIGHTVIEW DESIGN GROUP  
WADE GANES  
WADE.GANES@BRIGHTVIEW.COM  
949.238.4900

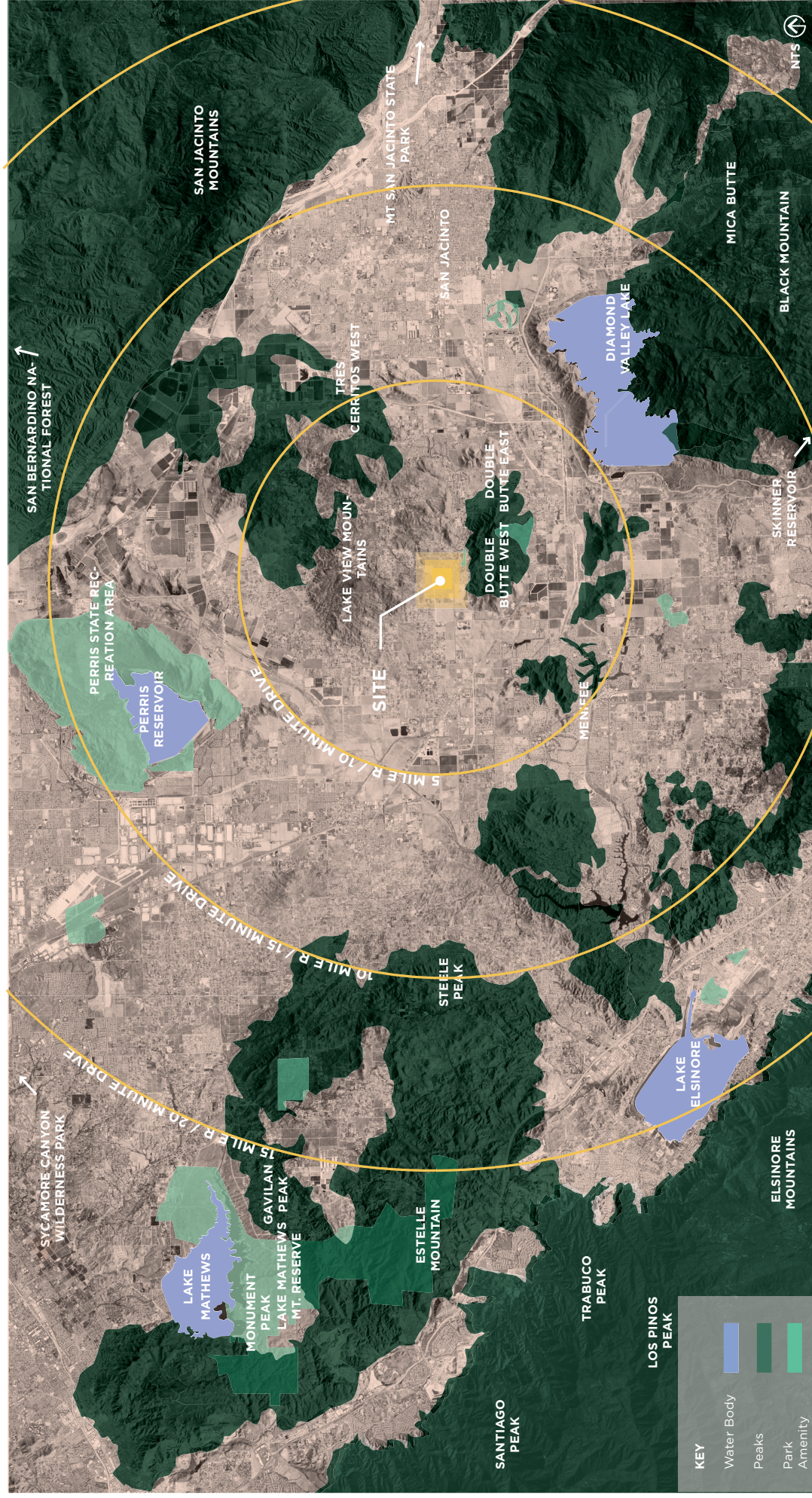
### SHEET INDEX:

1 TITLE SHEET  
2 REGIONAL AMENITY MAP  
3 OVERALL MAP  
4 PARK ENLARGEMENT  
5 PARKWAY & SLOPE ENLARGEMENT  
6 PLANT PALETTE  
13 ENTRY MONUMENTATION  
14 PARK MONUMENTATION  
15 WALL AND FENCE PLAN  
16 MAINTENANCE EXHIBIT  
17

TOTAL PROJECT SITE AREA: 26.5 AC  
LANDSCAPE AREA: 4.7 AC  
LANDSCAPE % 18%  
TOTAL CFD MAINTAINED AREA/ OFF-SITE: 15,924 SF  
TOTAL HOA MAINTAIN AREA / ON-SITE: 190,176 SF  
TOTAL PRIVATE MAINTAINED AREA: 649,025 SF  
REQUIRED NUMBER OF TREES PER ACRE: 60 PER AC  
TOTAL TREES PROVIDED: 293  
TOTAL STREET TREES REQUIRED (1 PER 30 LF): 25  
TOTAL STREET TREES PROVIDED: 28  
TOTAL SLOPE LANDSCAPE AREA: 76,814 SF  
TOTAL SLOPE TREES REQUIRED (1 TREE PER 750 SF): 102  
TOTAL SLOPE TREES PROVIDED: 216  
TOTAL SHRUBS REQUIRED (1 SHRUB PER 100 SF): 2700  
TOTAL SHRUBS PROVIDED: 2700  
TURF %: .60%



COUNTRYSIDE - PA 22 - TTM 38133  
REGIONAL AMENITY MAP





# COUNTRYSIDE - PA 22 - TTM 38133

## VICINITY MAP

The site is located north of Highway 74 and is adjacent to Harvest Valley Elementary School and Marion V. Ashley Community Center, providing a host of sports amenities for the residents to utilize. The regional bike trail passes by the eastern edge of the site along Briggs Road promoting alternative connection through the city. The surrounding plant palette is varied and consists of a desert theme at the elementary school (image A); hedge rows and dense tree planting at the northern neighborhood (image B), mixed California adaptive planting around highway 74 (image C) and traditional lawn at the high school (image D). Currently, this community is not in a proposed Community Design Guideline area.





COUNTRYSIDE - PA 22 - TTM 38133  
PRELIMINARY LANDSCAPE PLAN

Nestled north of Highway 74, Countryside is an up and coming vibrant residential community, with homes built for families to set roots. The area is adjacent to the beautiful Full Gospel Prayer Mountain providing a dramatic backdrop to the northeastern edge. Inspired by the natural beauty and rocky outcrops of the mountain top, Countryside's proposed entry monumentation creates a welcoming arrival experience for future residents of the community. The neighborhood park provides opportunities for play and social gatherings. Water-wise plants adapted to thrive in the Mediterranean climate create spaces with a variety of textures, pops of color, and verdant backdrops.

LEGEND

- 1 BASIN
- 2 NEIGHBORHOOD PARK
- 3 ENTRY MONUMENTATION (See sheet 14)
- PROPERTY LINE - - - - -
- LIMIT OF WORK - - - - -
- SEWER LINE - - - - -
- STORM DRAINS - - - - -
- WATER LINE - - - - -
- LIGHT POLES

NOTE:  
2 FRONT YARD TREES AND 1 STREET TREE TO BE PROVIDED PER LOT, AS WELL AS 1 TREE PER 750 SQ FT AND 1 SHRUB PER 100 SQ FT FOR ALL REAR SLOPES





# COUNTRYSIDE - PA 22 - TTM 38133

## PRELIMINARY PLANTING PLAN

### LEGEND

- BACK BONE STREET TREE - WATSON STREET  
CHILOPSIS LINEARIS - DESERT WILLOW  
QUERCUS AGRIFOLIA - COAST LIVE OAK  
PLATANUS X HISPANICA - LONDON PLANE TREE
- BACKBONE STREET TREE - MALONE STREET  
LAGERSTROEMIA "MUSKOGEE" - LAVENDER CREPE MYRTLE  
CERCIDIUM "DESERT MUSEUM" - DESERT MUSEUM PALO VERDE  
KOELREUTERIA PANICULATA - GOLDEN RAIN TREE
- BACKBONE STREET TREE - BRIGGS STREET  
LAGERSTROEMIA "MUSKOGEE" - LAVENDER CREPE MYRTLE
- INTERIOR STREET TREES  
F ST - PLATANUS X HISPANICA - LONDON PLANE TREE  
G ST - CHILOPSIS LINEARIS - DESERT WILLOW  
E ST - LAGERSTROEMIA "MUSKOGEE" - LAVENDER CREPE MYRTLE  
G ST - LAGERSTROEMIA "MUSKOGEE" - LAVENDER CREPE MYRTLE  
PLATANUS X HISPANICA - LONDON PLANE TREE  
QUERCUS AGRIFOLIA - COAST LIVE OAK  
VALERA LANE - CHILOPSIS LINEARIS - DESERT WILLOW  
CALLE DE CABALLOS ST - PLATANUS X HISPANICA - LONDON PLANE TREE  
PLATANUS X HISPANICA - LONDON PLANE TREE  
GELERA PARVIFLORA - AUSTRALIAN WILLOW
- PARK TREES  
CERCIDIUM "DESERT MUSEUM" - DESERT MUSEUM PALO VERDE  
CHILOPSIS LINEARIS - DESERT WILLOW  
KOELREUTERIA PANICULATA - GOLDEN RAIN TREE  
LAGERSTROEMIA "MUSKOGEE" - LAVENDER CREPE MYRTLE  
LAGERSTROEMIA "MUSKOGEE" - LAVENDER CREPE MYRTLE  
PINUS BRUTIA SSP. ELIDARICA - AFRICAN PINE  
QUERCUS AGRIFOLIA - COAST LIVE OAK  
QUERCUS DOUGLASSII - BLUE OAK
- BASIN TREES  
CHILOPSIS LINEARIS - DESERT WILLOW  
KOELREUTERIA PANICULATA - GOLDEN RAIN TREE  
PLATANUS X HISPANICA - LONDON PLANE TREE  
QUERCUS AGRIFOLIA - COAST LIVE OAK
- PARKWAY PLANTING
- PARK/OPEN SPACE PLANTING
- BASIN PLANTING
- HOMEOWNER BACKYARD SLOPE PLANTING

- NOTE:
1. 2 FRONT YARD TREES AND 1 STREET TREE TO BE PROVIDED PER LOT, AS WELL AS 1 TREE PER 750 SQ. FT. FOR ALL REAR SLOPES
  2. ADDITIONAL DROUGHT-TOLERANT TREE & PLANT SPECIES APPROPRIATE TO THE CLIMATE OF THE PROJECT WILL BE PROVIDED. THE LANDSCAPE PLAN CHECK AND ARE SUBJECT TO CITY LANDSCAPE ARCHITECT'S REVIEW AND APPROVAL
  3. SEE TREE AND PLANTING LEGEND FOR SIZE, WATER USE, AND SPACING ON SHEET 15.



# COUNTRYSIDE - PA 22 - TTM 38133

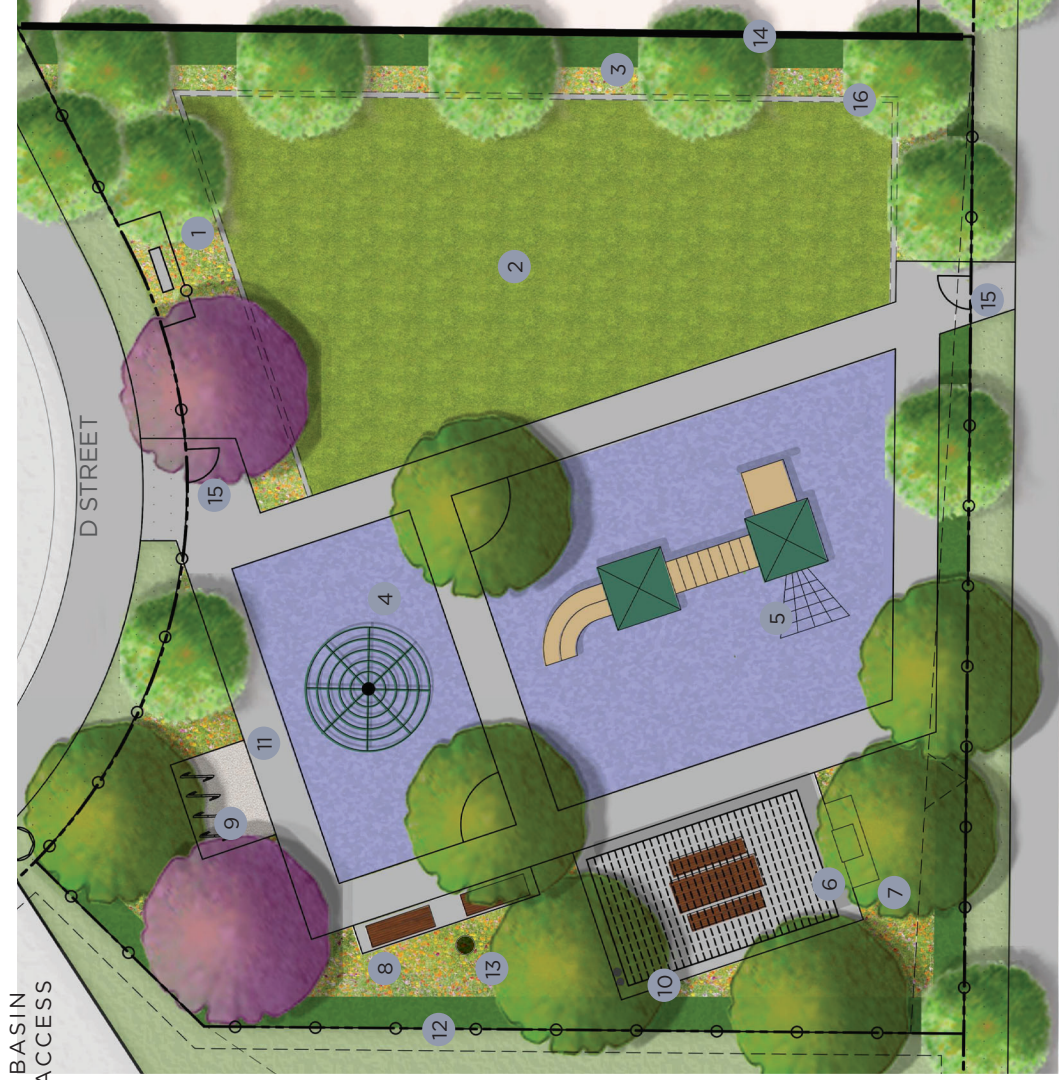
## PARK ENLARGEMENT

The neighborhood park provides a range of plan and gathering opportunities for residents. The play area caters to both toddler (2-5) and school age (5-12) children. The picnic court provides shade and an intimate space for birthday parties and play dates to occur. The flexible lawn provides a space to throw a ball or Frisbee and functions as a spill over space for the tot lot.

### LEGEND

- 1 Park Monumentation (See sheet 15)
- 2 Flexible Lawn (1,630 SF)
- 3 Enhanced Planting
- 4 2-5 Tot Lot (Resilient surfacing) - Pervious
- 5 5-12 Tot Lot (Resilient surfacing) - Pervious
- 6 Picnic court with Grey Matte Metal Shade Structure
- 7 BBQ
- 8 Seating
- 9 Bike Rack in Matte Gray
- 10 Trash and recycling receptacles
- 11 Walk (Natural gray concrete) - Impervious
- 12 Tube steel fencing (See Sheet 16)
- 13 Drinking Fountain
- 14 Split face Block Wall (See Sheet 16)
- 15 Gate
- 16 Mow curb
- 17 HOA Parkway Planting (See Sheet 13)

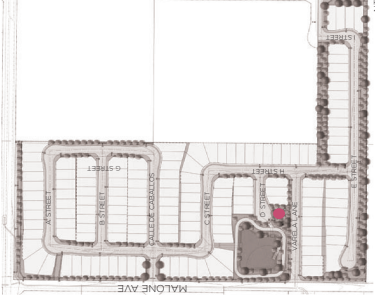
NOTE:  
1. ADDITIONAL DROUGHT-TOLERANT TREE & PLANT SPECIES APPROPRIATE TO LOCAL CLIMATE MAYBE INCORPORATED AT TIME OF LANDSCAPE PLAN CHECK AND ARE SUBJECT TO CITY LANDSCAPE ARCHITECT'S REVIEW AND APPROVAL.  
2. SEE TREE AND PLANTING LEGEND FOR SIZE, WATER USE, AND SPACING ON SHEET 13.  
3. ENTITLEMENT CONCEPT, COLORS AND MATERIALS DOES NOT REFLECT FINAL DESIGN  
4. PLANTS WILL BE CHECKED CAREFULLY AT PLAN CHECK FOR APPROPRIATENESS TO FINAL WIDTH OF PROPOSED PLANTERS AT PLAN CHECK, PLEASE ONLY PROPOSE PLANT THAT WILL FIT WITHIN AND ARE APPROPRIATE HEIGHT - WITHOUT REQUIRING MAINTENANCE TRIMMING.



VARELA LANE

- PARK TREES**  
CERCIDIMUM 'DESERT MUSEUM' - DESERT MUSEUM PALO VERDE  
CHILOPSIS LINEARIS - DESERT WILLOW  
KOELREUTERIA PANICULATA - GOLDEN RAIN TREE  
LAGERSTROEMIA 'MUSKOGEE' - LAVENDER CREPE MYRTLE  
LAGERSTROEMIA 'NANCHEZ' - WHITE FLOWERING CREPE MYRTLE  
PINUS BRUTIA SSP. EL DORADO - AFRICAN PINE  
QUERCUS AGRIFFOLIA - COAST LIVE OAK  
QUERCUS DOUGLASSII - BLUE OAK
- PARK PLANTING**  
**STREET TREES**  
G ST - PODOCARPUS GRACILOR - NEW PINE  
VALERA LANE - CHILOPSIS LINEARIS - DESERT WILLOW  
PLATANUS X HISPANICA - LONDON

### KEY MAP



### PARK PLANTING

- AGAVE 'BLUE GLOW' - BLUE GLOW AGAVE  
ALOE CAMPERI - POPCORN ALOE  
ALOE DAWEI - ORANGE FLAME ALOE  
BACCHARIS PILULARIS - COYOTE BUSH  
BACCHARIS 'CENTENNIAL' - DESERT BROOM  
BOULEQUA 'BLONDE AMBITION' - BLONDE AMBITION  
GRAMMA GRASS  
CAREX DIVULSA - BERKELEY SEDGE  
ROSEMARY 'TUSCAN BLUE' - ROSEMARY  
CHRYSANTHEMUM 'DIAMANTIA' - DIAMANTIA  
CISTANTHE GRANDIFLORA - ROCK PURSLANE  
CISTUS X PURPUREUS - PURPLE ROCKROSE  
DODONAEA VISCOSA - HOPSEED BUSH  
GREVILLEA 'NOELII' - NOEL'S GREVILLEA  
HESPERALOE PARVIFLORA - RED YUCCA  
LANTANA X 'SPREADING SUNSET' - SPREADING  
SUNSET LANTANA  
LANTANA X 'GOLD MOUND' - GOLD MOUND LANTANA  
LOBELIA LAXIFLORA - MEXICAN BUSH LOBELIA  
LONICERA JAPONICA 'HALLIANA' - HALL'S  
HONEYSUCKLE  
MUELENBERGIA DUBIA - PINE MUHLY  
MYOPORUM PARVIFOLIUM 'WHITE' - WHITE  
MYOPORUM  
OSTEOSPERMUM FRUITICOSA - TRAILING AFRICAN  
DAISEY  
SALVIA APANA - WHITE SAGE  
SENECIO VITALIS - NARROW-LEAF CHALKSTICKS  
TEUCRIUM X LUCIDRYS - WALL GERMANDER

### PARK SCREENING PLANTING

- BACCHARIS 'CENTENNIAL' - DESERT BROOM  
CISTUS X PURPUREUS - PURPLE ROCKROSE

### PARK TURF

- SEASHORE PASPALUM

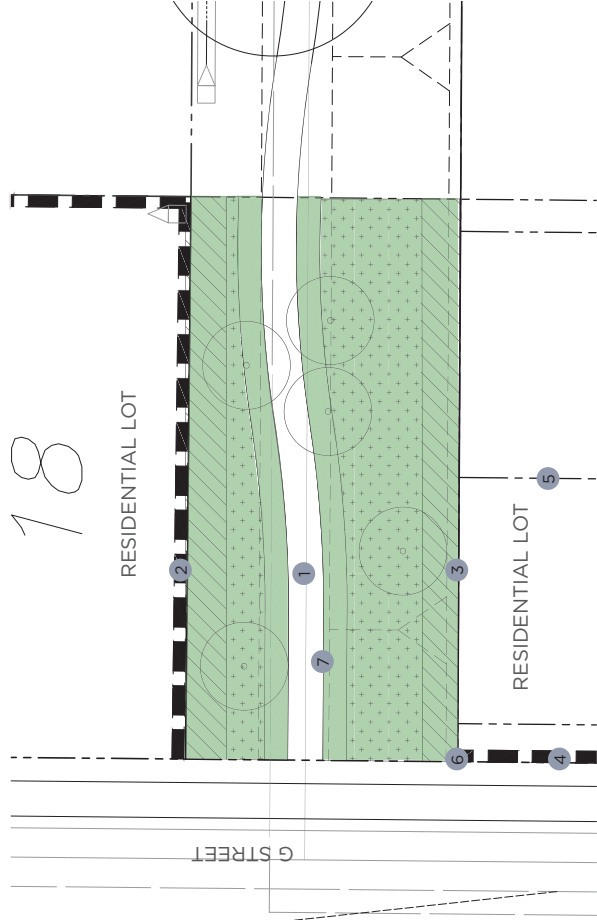
### HOA PARKWAY - GROUND COVER

- CAREX DIVULSA - BERKELEY SEDGE  
LANTANA X 'SPREADING SUNSET' - SPREADING  
SUNSET LANTANA  
LANTANA X 'GOLD MOUND' - GOLD MOUND LANTANA  
LONICERA JAPONICA 'HALLIANA' - HALL'S  
HONEYSUCKLE  
MYOPORUM PARVIFOLIUM 'WHITE' - WHITE  
MYOPORUM  
OSTEOSPERMUM FRUITICOSA - TRAILING AFRICAN  
DAISEY



COUNTRYSIDE - PA 22 - TTM 38133  
PARKWAY & SLOPE PLANTING ENLARGEMENTS

HOA OPEN SPACE - SLOPES PLANTING TYPOLOGY



CONSTRUCTION LEGEND

- 1 Walkway (DG in California Gold) - Pervious
- 2 Block Wall atop Retaining Wall (See sheet 16)
- 3 Splitwall Block Wall (See sheet 16)
- 4 Builder Retaining Wall (See sheet 16)
- 5 Vinyl Fence (See sheet 16)
- 6 ROW
- 7 Metal Edging in Gray

- NOTE:
- 1. ADDITIONAL DROUGHT-TOLERANT TREE & PLANT SPECIES APPROPRIATE TO LOCAL CLIMATE MAYBE INCORPORATED AT TIME OF LANDSCAPE PLAN CHECK AND ARE SUBJECT TO CITY LANDSCAPE ARCHITECT'S REVIEW AND APPROVAL.
  - 2. SEE TREE AND PLANTING LEGEND FOR SIZE, WATER USE, AND SPACING ON SHEET 13.
  - 3. ENTITLEMENT CONCEPT, COLORS AND MATERIALS DOES NOT REFLECT FINAL DESIGN
  - 4. PLANTS WILL BE CHECKED CAREFULLY AT PLAN CHECK FOR APPROPRIATENESS TO FINAL WIDTH OF PROPOSED PLANTERS AT PLAN CHECK, PLEASE ONLY PROPOSE PLANT THAT WILL FIT WITHIN AND ARE APPROPRIATE HEIGHT - WITHOUT REQUIRING MAINTENANCE TRIMMING.

PLANTING LEGEND

- HOA PARKWAY - GROUND COVER**
- CAREX DIVULSA - BERKELEY SEDGE
  - LANTANA X 'SPREADING SUNSET' - SPREADING SUNSET LANTANA
  - LANTANA X 'GOLD MOUND' - GOLD MOUND LANTANA
  - LONICERA JAPONICA 'HALLIANA' - HALL'S HONEYSUCKLE
  - MYOPORUM PARVIFOLIUM 'WHITE' - WHITE MYOPORUM
  - OSTEOSPERMUM FRUITICOSA - TRAILING AFRICAN DAISEY

**HOA SLOPE - SHRUB**

- AGAVE 'BLUE GLOW' - BLUE GLOW AGAVE
- AGAVE AMERICANA - CENTURY PLANT
- BACCHARIS PILLULARIS - COYOTE BUSH
- BACCHARIS 'CENTENNIAL' - DESERT BROOM
- BOUTELOUA 'BLONDE AMBITION' - BLONDE AMBITION GRAMA GRASS
- CAREX DIVULSA - BERKELEY SEDGE
- CHRYSANTHINA MEXICANA - DIAMANTIA
- CISTANTHE GRANDIFLORA - ROCK PURSLANE
- CISTUS X PURPUREUS - PURPLE ROCKROSE
- GREVILLEA 'NOELII' - NOEL'S GREVILLEA
- HESPERALOE PARVIFLORA - RED YUCCA
- LANTANA X 'SPREADING SUNSET' - SPREADING SUNSET LANTANA
- LANTANA X 'GOLD MOUND' - GOLD MOUND LANTANA
- LOBELIA LAXIFLORA - MEXICAN BUSH LOBELIA
- LONICERA JAPONICA 'HALLIANA' - HALL'S HONEYSUCKLE
- MUHLENBERGIA DUBIA - PINE MUHLY
- MYOPORUM PARVIFOLIUM 'WHITE' - WHITE MYOPORUM
- OSTEOSPERMUM FRUITICOSA - TRAILING AFRICAN DAISEY
- SALVIA APIANA - WHITE SAGE

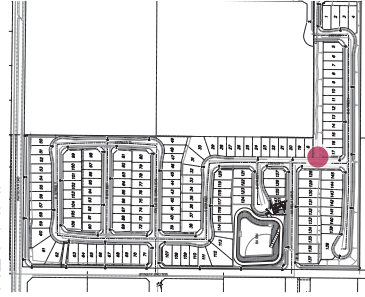
**HOA SLOPE - SCREENING**

- ARCTOSTAPHYLOS DENSIFLORA 'HOWARD MCMINN' - MANZANITA 'HOWARD MCMINN'
- CALLIANDRA CALIFORNICA - BALA FAIRY DUSTER
- DODONEA VISCOSA - HOPSEED BUSH
- HETEROMELES ARBUTIFOLIA - TOLON
- LEUCOPHYLLUM FRUTESCENS - TEXAS RANGER
- ROSEMARY 'TUSCAN BLUE' - ROSEMARY

**TREES**

- CHILOPSIS LINEARIS - DESERT WILLOW
- GIEJERA PARVIFLORA - AUSTRALIAN WILLOW
- KOELREUTERIA PANICULATA - GOLDEN RAIN TREE
- PINUS BRUTIA SSP ELDARICA - AFRICAN PINE
- PLATANUS X HISPANICA - LONDON PLANE TREE
- PODOCARPUS GRACILOR - YEW PINE
- QUERCUS AGRIFOLIA - COAST LIVE OAK

KEY MAP



SLOPE PLANTING REQUIREMENTS PER THE CITY OF MENIFEE:

PLANT MATERIAL - GENERAL

- 1. A COMBINATION OF SMALLER HERBACEOUS AND/OR PROSTRATE SHRUBBY GROUND COVERS, AND LARGER DEEP-ROOTED SHRUBS AND TREES, SHALL BE REQUIRED TO PREVENT BOTH SURFACE EROSION AND SLOPE MASS MOVEMENT.

- 2. LOW WATER USE PLANT MATERIAL APPROPRIATE TO SITE CONDITIONS, FROM SEED AND

CONTAINER STOCK, SHALL BE REQUIRED FOR SLOPE REVEGETATION.

- 3. SPECIES THAT GERMINATE QUICKLY AND SPREAD RAPIDLY SHALL BE PLANTED TO PROVIDE QUICK COVER AND PREVENT SURFACE EROSION. LONG-LIVED, SLOW-GROWING PLANT MATERIAL SHALL ALSO BE UTILIZED TO ENSURE LONG TERM SLOPE STABILITY.

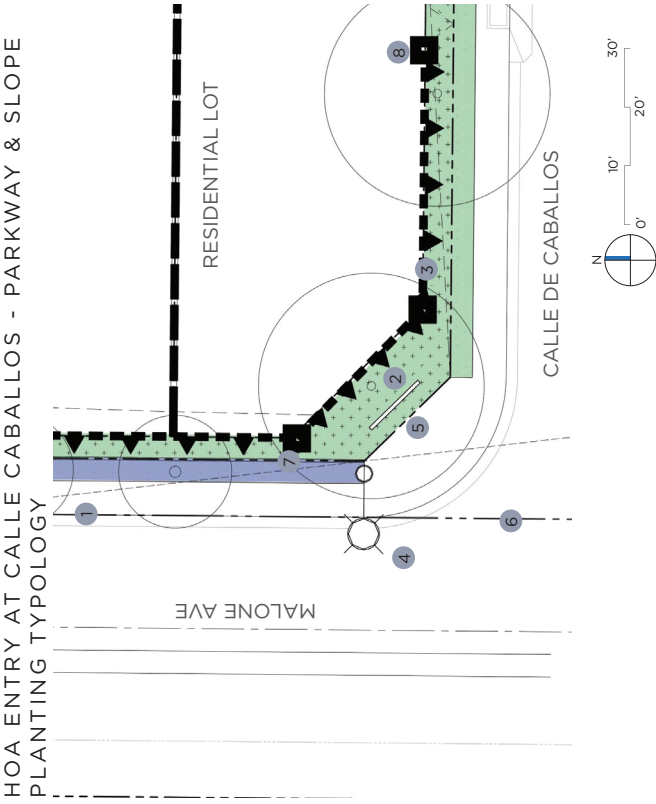
- 4. GERMINATION OF HYDROSEED SHALL BE REQUIRED BEFORE FINAL PROJECT ACCEPTANCE

- A. A GERMINATION RATE OF 90 PERCENT OVERALL, AND 50 PERCENT COVERAGE OF SOIL SURFACE, SHALL BE REQUIRED BY THE END OF THE ESTABLISHMENT PERIOD.

- B. AFTER ONE YEAR, COVERAGE OF SOIL SURFACE IN HYDROSEEDED AREAS SHALL BE MINIMUM 90 PERCENT.

NTS

COUNTRYSIDE - PA 22 - TTM 38133  
PARKWAY & SLOPE PLANTING ENLARGEMENTS



CONSTRUCTION LEGEND

- 1 Sidewalk (Concrete in Natural Gray Medium Broom) - Impervious
- 2 Entry Monumentation (see sheet 14)
- 3 Splitwall Block Wall (See sheet 16)
- 4 Street Light
- 5 ROW
- 6 Property Line
- 7 Mow Curb
- 8 Plaster

PLANTING LEGEND



CFD PARKWAY - GROUND COVER  
CAREX DIVULSA - BERKELEY SEDGE  
LANTANA X 'SPREADING SUNSET' - SPREADING SUNSET LANTANA  
LANTANA X 'GOLD MOUND' - GOLD MOUND LANTANA  
LONICERA JAPONICA 'HALLIANA' - HALL'S HONEYSUCKLE  
OSTEOSPERMUM FRUITICOSA - TRAILING AFRICAN DAISEY



HOA PARKWAY - GROUND COVER  
CAREX DIVULSA - BERKELEY SEDGE  
LANTANA X 'SPREADING SUNSET' - SPREADING SUNSET LANTANA  
LANTANA X 'GOLD MOUND' - GOLD MOUND LANTANA  
LONICERA JAPONICA 'HALLIANA' - HALL'S HONEYSUCKLE  
MYOPORUM PARVIFOLIUM 'WHITE' - WHITE MYOPORUM  
OSTEOSPERMUM FRUITICOSA - TRAILING AFRICAN DAISEY



HOA SLOPE - SHRUB  
AGAVE 'BLUE GLOW' - BLUE GLOW AGAVE  
AGAVE AMERICANA - CENTURY PLANT  
ARCTOSTAPHYLOS DENSIFLORA 'HOWARD MCMINN'  
MANZANITA 'HOWARD MCMINN'  
BACCHARIS 'CENTENNIAL' - DESERT BROOM  
BOUTELOUA 'BLONDE AMBITION' - BLONDE AMBITION GRAMA GRASS  
CAREX DIVULSA - BERKELEY SEDGE  
CHRYSANTHEMUM 'DIAMANTIA' - ROCK PURSLANE  
CISTUS X PURPUREUS - PURPLE ROCKROSE  
GREVILLEA 'NOELI' - NOEL'S GREVILLEA  
HESPERALOE PARVIFLORA - RED YUCCA  
LANTANA X 'SPREADING SUNSET' - SPREADING SUNSET LANTANA  
LANTANA X 'GOLD MOUND' - GOLD MOUND LANTANA  
LOBELIA LAXIFLORA - MEXICAN BUSH LOBELIA  
LONICERA JAPONICA 'HALLIANA' - HALL'S HONEYSUCKLE  
MULLEBERGIA DUBIA - PINE MUHLY  
MYOPORUM PARVIFOLIUM 'WHITE' - WHITE MYOPORUM  
OSTEOSPERMUM FRUITICOSA - TRAILING AFRICAN DAISEY  
SALVIA APIANA - WHITE SAGE



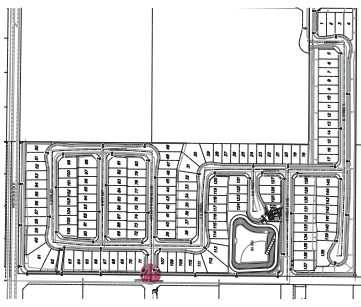
TREE  
QUERCUS AGRIFFOLIA - COAST LIVE OAK  
LAGERSTROEMIA 'MUSKOGEE' - LAVENDER CREPE MYRTLE  
CERCIDUM 'DESERT MUSEUM' - DESERT MUSEUM PALO VERDE  
KOELREUTERIA PANICULATA - GOLDEN RAIN TREE



VINE  
FICUS PUMILA - CREEPING FIG  
LONICERA J. HALLIANA - JAPANESE HONEYSUCKLE  
MACFADYIA UNGUIS CATI - CAT'S CLAW VINE

- NOTE:
1. ADDITIONAL DROUGHT-TOLERANT TREE & PLANT SPECIES APPROPRIATE TO LOCAL CLIMATE MAY BE INCORPORATED AT TIME OF LANDSCAPE PLAN CHECK AND ARE SUBJECT TO CITY LANDSCAPE ARCHITECT'S REVIEW AND APPROVAL
  2. SEE TREE AND PLANTING LEGEND FOR SIZE, WATER USE, AND SPACING ON SHEET 13.
  3. ENTITLEMENT CONCEPT, COLORS AND MATERIALS DOES NOT REFLECT FINAL DESIGN
  4. PLANTS WILL BE CHECKED CAREFULLY AT PLAN CHECK FOR APPROPRIATENESS WITH PROPOSED PLANTERS AT PLAN CHECK. EASE ONLY PROPOSED PLANTERS TO BE WITHIN AND ARE APPROPRIATE HEIGHT - WITHOUT REQUIRING MAINTENANCE TRIMMING.

KEY MAP

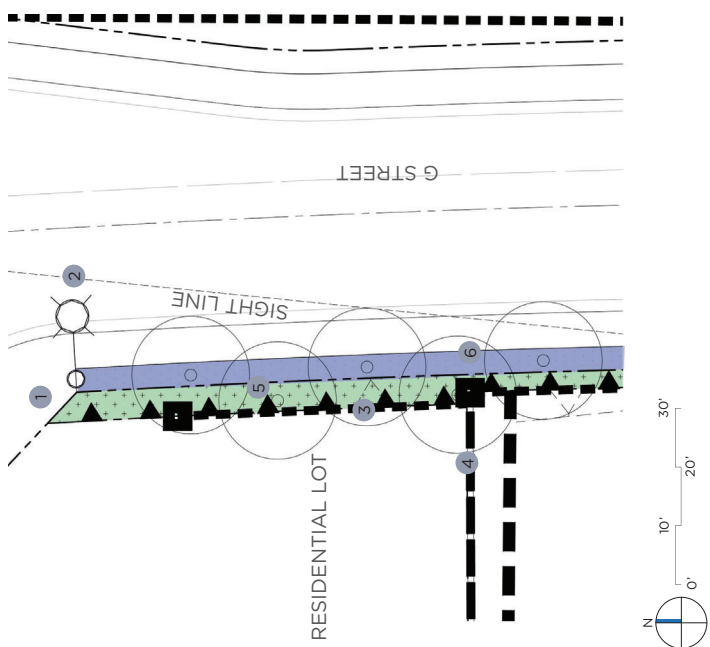


NTS



COUNTRYSIDE - PA 22 - TTM 38133  
PARKWAY & SLOPE PLANTING ENLARGEMENTS

TYPICAL SLOPE - SLOPE PLANTING TYPOLOGY



CONSTRUCTION LEGEND

- 1 Sidewalk (Concrete in Natural Gray Medium Broom) - Impervious
- 2 Street light
- 3 Splitwall Block Wall (See sheet 16)
- 4 Vinyl Fence Atop Retaining Wall (See sheet 16)
- 5 ROW
- 6 Plaster

PLANTING LEGEND

**HOA PARKWAY - GROUND COVER**  
CAREX DIVULSA - BERKELEY SEDGE  
LANTANA X 'SPREADING SUNSET' - SPREADING SUNSET LANTANA  
LANTANA X 'GOLD MOUND' - GOLD MOUND LANTANA  
LONICERA JAPONICA 'HALLIANA' - HALL'S HONEYSUCKLE  
OSTEOSPERMUM FRUITICOSA - TRAILING AFRICAN DAISEY

**HOA SLOPE - SHRUB**

AGAVE 'BLUE GLOW' - BLUE GLOW AGAVE  
AGAVE AMERICANA - CENTURY PLANT  
ARCTOSTAPHYLOS DENSIFLORA 'HOWARD MCMINN'  
BACCHARIS 'CENTENNIAL' - DESERT BROOM  
BOUTELOUA 'BLONDE AMBITION' - BLONDE AMBITION GRAMA GRASS  
CAREX DIVULSA - BERKELEY SEDGE  
CHRYSACTINIA MEXICANA - DIAMANTIA  
CISTANTHE GRANDIFLORA - ROCK PURSLANE  
CISTUS X PURPUREUS - PURPLE ROCKROSE  
GREVILLEA 'NOELII' - NOELS GREVILLEA  
HESPERALOE PARVIFLORA - RED YUCCA  
LANTANA X 'SPREADING SUNSET' - SPREADING SUNSET LANTANA  
LANTANA X 'GOLD MOUND' - GOLD MOUND LANTANA  
LOBELIA LAMFLORA - MEXICAN BUSH LOBELIA  
LONICERA JAPONICA 'HALLIANA' - HALL'S HONEYSUCKLE  
MUEHLENBERGIA DUBIA - PINE MUHLY  
MYOPORUM PARVIFOLIUM 'WHITE' - WHITE MYOPORUM  
OSTEOSPERMUM FRUITICOSA - TRAILING AFRICAN DAISEY  
SALVIA APIANA - WHITE SAGE

**TREE**

QUERCUS AGRIFOLIA - COAST LIVE OAK  
PLATANUS X HISPANICA - LONDON PLANE TREE  
GIEJERA PARVIFLORA - AUSTRALIAN WILLOW

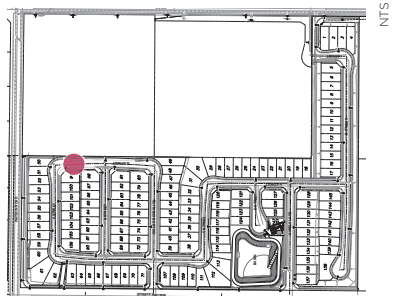
**VINE**

FICUS PUMILA - CREEPING FIG  
LONICERA J. HALLIANA - JAPANESE HONEYSUCKLE  
MACFADYIA UNGUIS CATII - CAT'S CLAW VINE

NOTE:

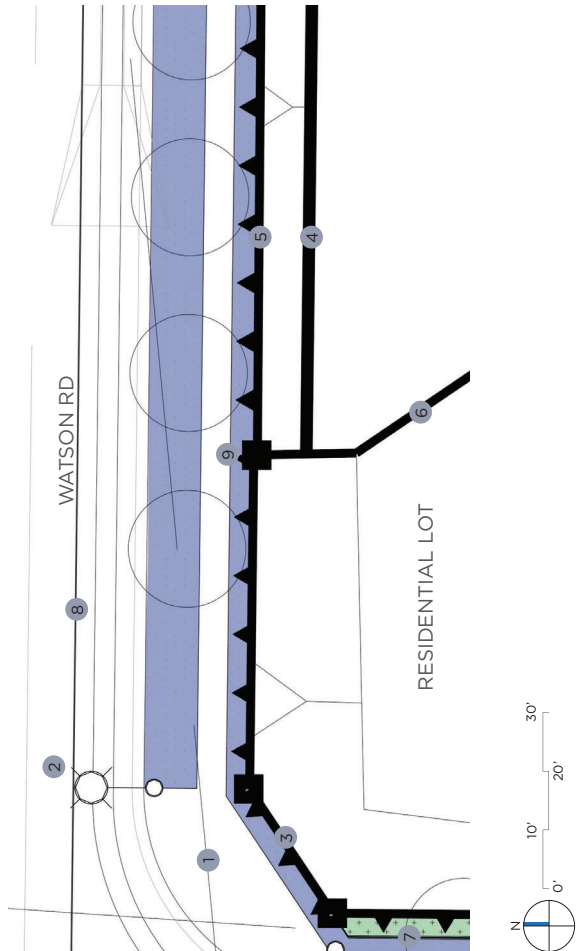
- 1. ADDITIONAL DROUGHT-TOLERANT TREE & PLANT SPECIES APPROPRIATE TO LOCAL CLIMATE MAYBE INCORPORATED AT TIME OF LANDSCAPE PLAN CHECK AND ARE SUBJECT TO CITY LANDSCAPE ARCHITECT'S REVIEW AND APPROVAL
- 2. SEE TREE AND PLANTING LEGEND FOR SIZE, WATER USE, AND SPACING ON SHEET 13
- 3. ENTITLEMENT CONCEPT, COLORS AND MATERIALS DOES NOT REFLECT FINAL DESIGN
- 4. PLANTS WILL BE CHECKED CAREFULLY AT PLAN CHECK FOR APPROPRIATE SIZES, SPACING, AND PLANTING PATTERNS AT PLAN CHECK. PLEASE ONLY PROPOSE PLANTING THAT WILL FIT WITHIN AND ARE APPROPRIATE HEIGHT - WITHOUT REQUIRING MAINTENANCE TRIMMING.

KEY MAP



COUNTRYSIDE - PA 22 - TTM 38133  
PARKWAY & SLOPE PLANTING ENLARGEMENTS

CFD WATSON - PARKWAY AND SLOPE PLANTING TYPOLOGY



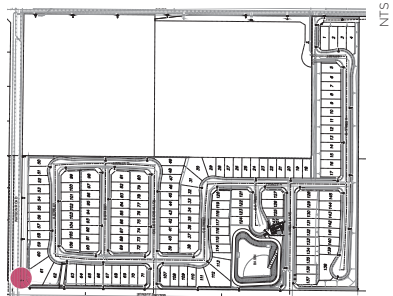
CONSTRUCTION LEGEND

- 1 Sidewalk (Concrete in Natural Gray Medium Broom) - Impervious
- 2 Street light
- 3 Split wall Block Wall (See sheet 16)
- 4 Builder Retaining Wall (See sheet 16)
- 5 Block Wall Atop Retaining Wall (See sheet 16)
- 6 Vinyl Fence
- 7 ROW
- 8 Property Line
- 9 Pilaster

PLANTING LEGEND

- CFD PARKWAY - GROUND COVER**
- CAREX DIVULSA - BERKELEY SEDGE
  - LANTANA X 'SPREADING SUNSET' - SPREADING SUNSET LANTANA
  - LANTANA X 'GOLD MOUND' - GOLD MOUND LANTANA
  - LONICERA JAPONICA 'HALLIANA' - HALL'S HONEYSUCKLE
  - OSTEOSPERMUM FRUITICOSA - TRAILING AFRICAN DAISEY
- CFD SLOPE - SHRUB**
- AGAVE 'BLUE GLOW' - BLUE GLOW AGAVE
  - AGAVE AMERICANA - CENTURY PLANT
  - ARCTOSTAPHYLOS DENSIFLORA 'HOWARD MCMINN'
  - MANZANITA 'HOWARD MCMINN'
  - BACCHARIS 'CENTENNIAL' - DESERT BROOM
  - BOUTELOUJA 'BLONDE AMBITION' - BLONDE AMBITION GRAMA GRASS
  - CAREX DIVULSA - BERKELEY SEDGE
  - CHRYSANTHUM MEXICANA - DIAMANTIA
  - CISTANTHE GRANDIFLORA - ROCK PURSLANE
  - CISTUS X PURPUREUS - PURPLE ROCKROSE
  - GREVILLEA 'NOELII' - NOEL'S GREVILLEA
  - HESPERALOE PARVIFLORA - RED YUCCA
  - LANTANA X 'SPREADING SUNSET' - SPREADING SUNSET LANTANA
  - LANTANA X 'GOLD MOUND' - GOLD MOUND LANTANA
  - LOBELIA LAURFLORA - MEXICAN BUSH LOBELIA
  - LONICERA JAPONICA 'HALLIANA' - HALL'S HONEYSUCKLE
  - MUEHLBERGIA DUBIA - PINE TICHLY
  - MYOPORUM PARVIFOLIUM WHITE - WHITE MYOPORUM
  - OSTEOSPERMUM FRUITICOSA - TRAILING AFRICAN DAISEY
  - SALVIA APIANA - WHITE SAGE
- TREE**
- CHILOPSIS LINEARIS - DESERT WILLOW
  - QUERCUS AGRIFOLIA - COAST LIVE OAK
- VINE**
- FICUS PUMILA - CREEPING FIG
  - LONICERA 'J. HALLIANA' - JAPANESE HONEYSUCKLE
  - MACFADYIA UNGUIS CATII - CAT'S CLAW VINE

KEY MAP

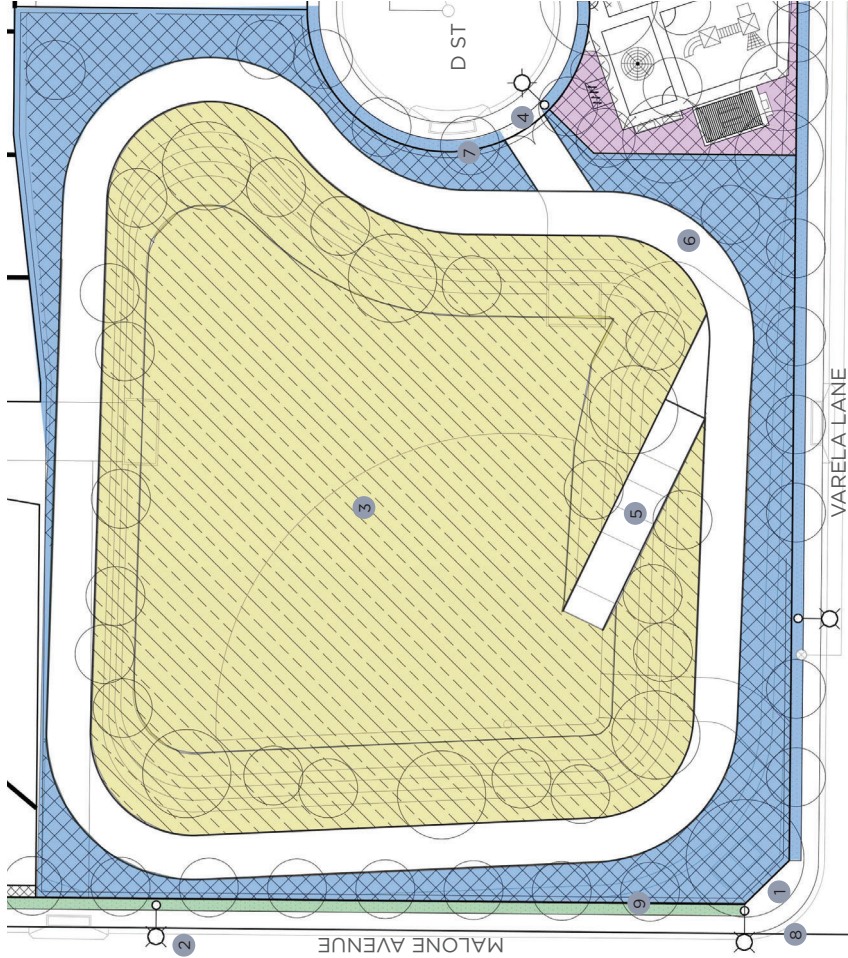


- NOTE:
- 1. ADDITIONAL DROUGHT-TOLERANT TREE & PLANT SPECIES APPROPRIATE TO LOCAL CLIMATE MAY BE INCORPORATED AT TIME OF LANDSCAPE PLAN CHECK AND ARE SUBJECT TO CITY LANDSCAPE ARCHITECT'S REVIEW AND APPROVAL.
  - 2. SEE TREE AND PLANTING LEGEND FOR SIZE, WATER USE, AND SPACING ON SHEET 13.
  - 3. ENTITLEMENT CONCEPT, COLORS AND MATERIALS DOES NOT REFLECT FINAL DESIGN.
  - 4. PLANTS WILL BE CHECKED CAREFULLY AT PLAN CHECK FOR APPROPRIATE TO LOCAL CLIMATE AND TO BE INCORPORATED AT PLAN CHECK. PLEASE ONLY PROPOSE PLANT THAT WILL FIT WITHIN AND ARE APPROPRIATE HEIGHT - WITHOUT REQUIRING MAINTENANCE TRIMMING.



# COUNTRYSIDE - PA 22 - TTM 38133 PARKWAY & SLOPE PLANTING ENLARGEMENTS

HOA BASIN - SLOPE AND PARKWAY PLANTING TYPOLOGY



## CONSTRUCTION LEGEND

- 1 Sidewalk (Concrete in Natural Gray Medium Broom) - Impervious
- 2 Street light
- 3 Basin
- 4 Basin Fence and Gate (See sheet 16)
- 5 Basin Access Ramp (Concrete) - Impervious
- 6 Basin Access Road (Concrete) - Impervious
- 7 ROW
- 8 Property Line
- 9 Mow Curb

60'  
40'

## PLANTING PALETTE



**CFD PARKWAY - GROUND COVER**  
 CAREX DIVULSA - BERKELEY SEDGE  
 LANTANA X 'SPREADING SUNSET' - SPREADING SUNSET LANTANA  
 LANTANA X 'GOLD MOUND' - GOLD MOUND LANTANA  
 LONICERA JAPONICA 'HALLIANA' - HALL'S HONEYSUCKLE  
 MYOPORUM PARVIFOLIUM 'WHITE' - WHITE MYOPORUM  
 OSTEOSPERMUM FRUITICOSA - TRAILING AFRICAN DAISEY



**HOA PARKWAY - GROUND COVER**  
 CAREX DIVULSA - BERKELEY SEDGE  
 LANTANA X 'SPREADING SUNSET' - SPREADING SUNSET LANTANA  
 LANTANA X 'GOLD MOUND' - GOLD MOUND LANTANA  
 LONICERA JAPONICA 'HALLIANA' - HALL'S HONEYSUCKLE  
 MYOPORUM PARVIFOLIUM 'WHITE' - WHITE MYOPORUM  
 OSTEOSPERMUM FRUITICOSA - TRAILING AFRICAN DAISEY



**HOA BASIN UPLAND SHRUBS**  
 AGAVE 'BLUE GLOW' - BLUE GLOW AGAVE  
 AGAVE AMERICANA - CENTURY PLANT  
 BACCHARIS PILULARIS - COYOTE BUSH  
 BACCHARIS 'CENTENNIAL' - DESERT BROOM  
 CISTUS X PURPUREUS - PURPLE ROCKROSE  
 CHRYSACTINIA MEXICANA - DIAMANTIA  
 SENEIO VITALIS - NARROW-LEAF CHALKSTICKS  
 TELICRUM X LUCIDRYS - WALL GERMANDER



**HOA PARK - SHRUB (SEE SHEET 13 FOR PARK TREES AND PLANTING)**



**BASIN (SEE MAINTENANCE EXHIBIT FOR MAINTENANCE ENTITY)**  
 BACCHARIS 'CENTENNIAL' - DESERT BROOM  
 CAREX DIVULSA - BERKELEY SEDGE  
 DODONAEA VISCOSA - HOPSEED BUSH  
 LANTANA X 'SPREADING SUNSET' - SPREADING SUNSET LANTANA  
 LANTANA X 'GOLD MOUND' - GOLD MOUND LANTANA  
 LOBELIA LAXIFLORA - MEXICAN BUSH LOBELIA  
 HESPERALOE PARVIFLORA - RED YUCCA  
 SALVIA APIANA - WHITE SAGE  
 BACCHARIS 'CENTENNIAL' - DESERT BROOM  
 CISTUS X PURPUREUS - PURPLE ROCKROSE



**BASIN TREES**  
 CHILOPSIS LINEARIS - DESERT WILLOW  
 KOELREUTERIA PANICULATA - GOLDEN RAIN TREE  
 PLATANUS X HISPANICA - LONDON PLANE TREE  
 QUERCUS AGRIFOLIA - COAST LIVE OAK

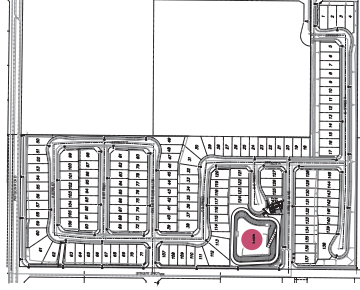


**VALERA LANE**  
 CHILOPSIS LINEARIS - DESERT WILLOW  
 PLATANUS X HISPANICA - LONDON PLANE TREE

NOTE:

1. ADDITIONAL DROUGHT-TOLERANT TREE & PLANT SPECIES APPROPRIATE TO LOCAL CLIMATE MAYBE INCORPORATED AT TIME OF LANDSCAPE PLAN CHECK AND ARE SUBJECT TO CITY LANDSCAPE ARCHITECT'S REVIEW AND APPROVAL.
2. SEE TREE AND PLANTING LEGEND FOR SIZE, WATER USE, AND SPACING ON SHEET 13.
3. ENTITLEMENT CONCEPT, COLORS AND MATERIALS DOES NOT REFLECT FINAL DESIGN
4. PLANTS WILL BE CHECKED CAREFULLY AT PLAN CHECK FOR APPROPRIATENESS TO FINAL WIDTH OF PROPOSED PLANTERS AT PLAN CHECK, PLEASE ONLY PROPOSE PLANT THAT WILL FIT WITHIN AND ARE APPROPRIATE HEIGHT - WITHOUT REQUIRING MAINTENANCE TRIMMING.

## KEY MAP

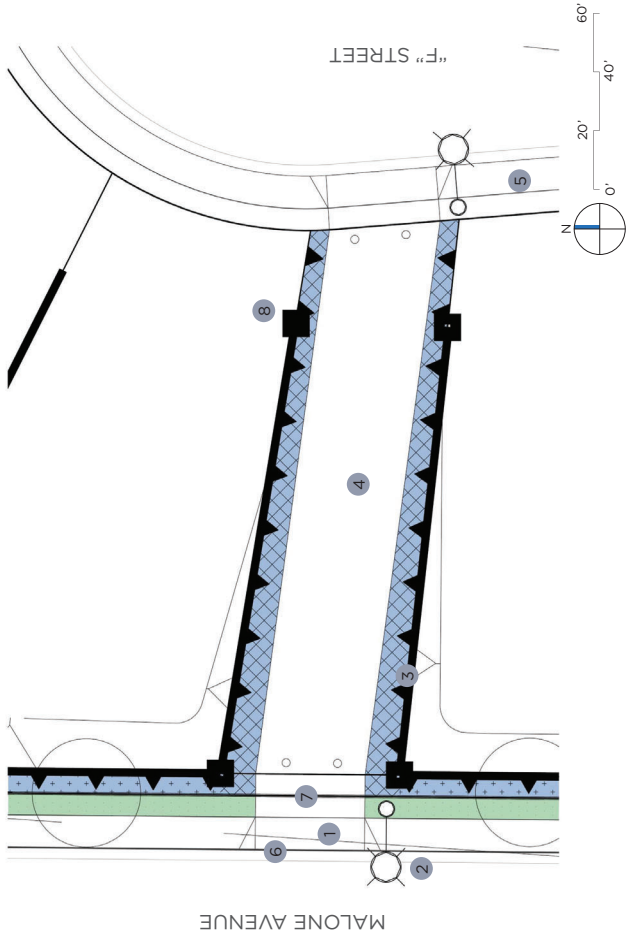


NTS



COUNTRYSIDE - PA 22 - TTM 38133  
PARKWAY & SLOPE PLANTING ENLARGEMENTS

FIRE ACCESS - PARKWAY PLANTING TYPOLOGY

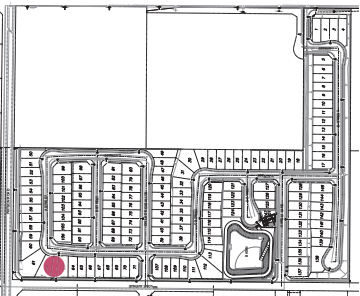


- PLANTING LEGEND**
- HOA PARKWAY - GROUND COVER**
- CAREX DIVULSA - BERKELEY SEDGE
  - LANTANA X 'SPREADING SUNSET' - SPREADING SUNSET LANTANA
  - LANTANA X 'GOLD MOUND' - GOLD MOUND LANTANA
  - LONICERA JAPONICA 'HALLIANA' - HALL'S HONEYSUCKLE
  - MYOPORUM PARVIFOLIUM 'WHITE' - WHITE MYOPORUM
  - OSTEOSPERMUM FRUITICOSA - TRAILING AFRICAN DAISEY
- CFD PARKWAY - GROUND COVER**
- CAREX DIVULSA - BERKELEY SEDGE
  - LANTANA X 'SPREADING SUNSET' - SPREADING SUNSET LANTANA
  - LANTANA X 'GOLD MOUND' - GOLD MOUND LANTANA
  - LONICERA JAPONICA 'HALLIANA' - HALL'S HONEYSUCKLE
  - MYOPORUM PARVIFOLIUM 'WHITE' - WHITE MYOPORUM
  - OSTEOSPERMUM FRUITICOSA - TRAILING AFRICAN DAISEY
- HOA PARKWAY - SHRUB**
- AGAVE 'BLUE GLOW' - BLUE GLOW AGAVE
  - AGAVE AMERICANA - CENTURY PLANT
  - BACCHARIS PILLULARIS - COYOTE BUSH
  - CHRYSAECTINIA MEXICANA - DIAMANTIA
  - SENECIO VITALIS - NARROW-LEAF CHALKSTICKS
  - TEUCRIUM X LUCIDRYS - WALL GERMANDER
- VINE**
- FICUS PUMILA - CREEPING FIG
  - LONICERA J. HALLIANA - JAPANESE HONEYSUCKLE
  - MACFADYIA UNGUIS CATII - CAT'S CLAW VINE
- TREE**
- LAGERSTROEMIA 'MUSKOGEE' - LAVENDER CREPE MYRTLE
  - CERCIDIUM 'DESERT MUSEUM' - DESERT MUSEUM PALO VERDE
  - KOELREUTERIA PANICULATA - GOLDEN RAIN TREE

CONSTRUCTION LEGEND

- 1 Sidewalk (Concrete in Natural Gray Medium Broom) - Impervious
- 2 Street light
- 3 Split wall Block Wall (See sheet 16)
- 4 Emergency Access
- 5 ROW
- 6 Property Lines
- 7 Mow Curb
- 8 Plaster









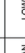


KEY MAP



NTS



## PLANT PALETTE

TREES		LANDSCAPE TYPOLOGY**										PLANT USE	
SYMBOL	PLANT NAME	SIZE	MATURE HEIGHT	MATURE SPREAD	O.C. SPACING	WALKS REGION 4	VALLEY WIDE APPROVED	BASINS			SLOPES	PLANT USE	
								PARK					
	CERCIDIUM DESERT MUSEUM DESERT MUSEUM PALO VERDE	24' BOX	20'	20'	PER PLAN	LOW	NO					STREET, ACCENT MALONE ST	
	CHRYSOPSIS LAKUM DESERT YUKUM	24' BOX	10' TO 30'	10' TO 20'	PER PLAN	LOW	NO					ACCENT WATSON ST	
	GELIERA PARVIFLORA AUSTRALIAN WILLOW	24' BOX	20' TO 30'	20'	PER PLAN	MEDIUM	YES					STREET P ST CALLE DE CABALLOS	
	KORI BUTLERIA PANICULATA GOLDENMAN TREE	24' BOX	20' TO 35'	25' TO 40'	PER PLAN	LOW	NO					STREET, ACCENT MALONE ST	
	LAGERSTROEMIA "MULSOGAE" JAPANESE CREANVILLE	24' BOX	25'	12'	PER PLAN	MEDIUM	YES					ACCENT MALONE ST BREGGS ST	
	LAGERSTROEMIA "NATCHEZ" WHITE FLOWERING GIEREMIRTE	24' BOX	25'	12'	PER PLAN	MEDIUM	NO					ACCENT E ST	
	PINUS MITIS P. FLORICRA PIÑON WHITE SPR. FLORICRA	24' BOX	30' TO 80'	15' TO 25'	PER PLAN	LOW	YES					SLOPE	
	PLATANUS X HISPANICA LONDON PLANE TREE	24' BOX	40' TO 80'	30' TO 40'	PER PLAN	MEDIUM	YES					STREET, SHADE E ST CALLE DE CABALLOS	
	PODOCARPUS GRACILIOR YEW PINE	24' BOX	20' TO 60'	10' TO 20'	PER PLAN	MEDIUM	YES					STREET, SHADE	
	PROSOPIS GLANDULOSA "MAYENCO" HONEY MESQUITE	24' BOX	30'	30'	PER PLAN	LOW	NO					SHADE	
	QUERCUS AGRIFOLIA COAST LIVE OAK	24' BOX	20' TO 70'	20' TO 70"	PER PLAN	LOW	YES					SPECIMEN SHADE WATSON ST	
	QUERCUS DOUGLASHI BLUE OAK	24' BOX	30' TO 40'	50' TO 70'	PER PLAN	LOW	YES					SPECIMEN SHADE	

SHRUBS		LANDSCAPE TYPOLOGY*										PLANT USE	
SYMBOL	PLANT NAME	SIZE	MATURE HEIGHT	NATIVE SPREAD	O.C. SPACING	WILDS. REGION 4	VALLEY WIDE APPROVED	PARK	LANDSCAPE TYPOLOGY*		SLIPES		
									BRAIN SLOPE BOTTOM	PARKWAYS			
Ⓐ	AGAVE BLUE GLOW	5 GAL	1' TO 2'	2' TO 3'	3'-0"	LOW	NO					ACCENT	
Ⓑ	AGAVE AMERICANA	15 GAL	6'	10'	10'-0"	VERY LOW	NO					ACCENT	
Ⓒ	CENTURY PLANT	5 GAL	2' TO 3'	SPREADING	3'-0"	LOW	NO					ACCENT	
Ⓓ	ALOE GLOW ALICE	5 GAL	3' TO 4'	3' TO 4'	5'-0"	LOW	NO					ACCENT	
Ⓔ	ALOE DAVE	5 GAL	5' TO 6'	7'	5'-0"	LOW	NO					SPECIMEN	
Ⓕ	ANACARDIUM GINSENG LORA	5 GAL	8' TO 12'	6'	5'-0"	LOW	YES					SCREENING SHRUB	
Ⓖ	BACCHARIS PILLARS	1 GAL	3' TO 4'	4' TO 5'	5'-0"	LOW	YES**					SHRUB	
Ⓗ	COYOTE BUSH	5 GAL	3'	3'	5'-0"	LOW	NO					ACCENT	
Ⓙ	DESERT BROOM	5 GAL	5'	5' TO 6'	6'-0"	LOW	NO					SCREENING SHRUB	
Ⓚ	CALLIANDRA CALIFORNICA	1 GAL	24"	24"	2'-0"	LOW	NO					SHRUB	
Ⓛ	DIAMANTA	5 GAL	12'	2' TO 3'	3'-0"	LOW	NO					ACCENT	
Ⓜ	ROCK PINE	5 GAL	4'	4'	4'-0"	LOW	YES**					SHRUB	
Ⓝ	PURPLE ROCKROSE	5 GAL	10' TO 15'	8' TO 12'	10'-0"	MED	YES					SCREENING SHRUB	
Ⓞ	ROSE OF SHERRA	5 GAL	4'	4' TO 5'	5'-0"	LOW	NO					SHRUB	
Ⓟ	NOEL'S GREVILLEA	5 GAL	3' TO 4'	3' TO 4'	5'-0"	LOW	YES**					ACCENT	
Ⓠ	NETRONELES AMBIFOLIA	15 GAL	6' TO 10'	8' TO 10'	8'-0"	LOW	YES					SCREENING SHRUB	
Ⓡ	TOYON	5 GAL	6' TO 8'	6' TO 8'	5'-0"	LOW	YES					SCREENING SHRUB	
Ⓢ	TEXAS RANGER	15 GAL	6' TO 8'	6' TO 8'	5'-0"	LOW	YES					SHRUB	
Ⓣ	LORELIA AXIN LORA	5 GAL	3'	3' TO 6'	6'-0"	LOW	NO					ACCENT	
Ⓤ	MAHONERIA RUBRA	1 GAL	2' TO 3'	2' TO 3'	3'-0"	LOW	NO					SCREENING SHRUB	
Ⓡ	PINE MAJEL	5 GAL	4' TO 6'	4' TO 5'	6'-0"	LOW	NO					ACCENT	
Ⓢ	ROSEMARY	5 GAL	3' TO 5'	3' TO 5'	4'-0"	LOW	YES					ACCENT	
Ⓣ	SALVIA APANA	5 GAL	1' TO 2'	3' TO 5'	3'-0"	LOW	NO					ACCENT	
Ⓤ	SENECIO VITALIS	5 GAL	1'	2'	2'-0"	LOW	YES					SHRUB	
Ⓡ	NARROW-LEAF CALISTEGUS	5 GAL	1'	2'	2'-0"	LOW	YES					SHRUB	

Riverside County Ordinance 859 Landscape Water Use Calculations

Applicant to use drop down menus in cells that indicate a selection to describe each hydrazine. Where "input" is shown, applicant to enter project specific information. Please note that embedded formulas will reflect as "false" or an error until selections are complete.

1 Maximum Annual Water Allowance (MAWA)

INPUT the total square footage of landscape = 159,020 S.F.

INPUT the H<sub>2</sub>O for the area = 57.33

$$2 \quad \text{Estimated Annual Water Use} \quad \text{MAWA} = \frac{377,228}{\text{cu ft}} \quad (\text{EAWU})$$

Hydrozone # 1 - Park Turf  
 INPUT Square Foot Area of Hydrozone = 1630  
 Hydrozone Irrigation Efficiency = 0.75  
 Plant Factor = 0.5  
 Area

Hydrozone # 2 - Park Shrub  
 INPUT square footage of Hydrozone = 1,250  
 Plant Factor = 0.5  
 EAWU = 5,164 cu ft./yr  
 Hydrozone Efficiency = 0.80

Hydrozone # 3 - HOA Parkway  
NPWT square footage of hydrozone = 91,000  
EAWU = 3,633 cu ft / yr  
Plant Factor = 0.2

Hydrozone # 4 - HOA lands cape  
INPUT square footage of hydrozone = 7,7500  
Plant Factor = 0.5  
EAWU = 333.107 cu ft / yr

Hydrozone # 5 - Valley Wide Maint.  
 INPUT square footage of hydrozone = 33,400  
 Plant Factor = 0.2  
 EAWU = 30,492 cu ft/yr

Hydrozone # 6  
INPUT square footage of hydrozone = 0  
Plant Factor = 0  
EAVU = 72.737 cu ft/yr  
Hydrozone Ingress Entree = 0.73

Hydrozone Irrigation Efficiency = 1  
EAWU = 0 cu ft / yr

Sub Total EAWU = 220.331 cu ft  
Input Irrigation System Operation Factor 0.85

Total EAWU = 259,213  
MAYU - EAWU = 118,616  
(this number must be positive)  
PERCENTAGE MAYU ALLOWED = 45.75%

\* Trees are not required to be listed as a separate hydrozone if understory is planted with plants of an equal or higher plant factor, and foot area is already included in calculations.

3

rightView  OVERALL PR

### IRRIGATION NOTES:

1. All areas requiring landscaping shall include the installation of a permanent automatic irrigation system. Turf and shrub irrigation systems shall be irrigated separately.
2. Sprinkler heads adjacent to all walkways and areas of pedestrian or vehicular traffic shall be spring retractable types.
3. Pop-up sprinklers shall have matched precipitation rates.
4. All valves shall be wired independently.
5. Irrigation backflow prevention devices and controllers shall be located and/or screened with appropriate plant material to minimize visibility.
6. Detail irrigation plans shall be prepared by a licensed landscape architect.
7. Irrigation plans shall be submitted to the appropriate reviewing agencies for approval prior to installation.
8. Irrigation design shall comply with Ordinance 859.3 and the State's latest Model Water Efficient Landscape Ordinance (WAELO).
9. No overhead irrigation shall be within 24" of non-permeable surface.
10. Subsurface or low-volume irrigation shall be used for irregularly shaped areas, or areas less than 10' in width.
11. All equipment and plans shall conform to recycled water use requirements.
12. All trees to receive dedicated bubbler system.

PLANTING NOTES:

1. Plants shall be grouped according to water use factors per WUCOLS zones / compliant with Ordinance 859.3.
2. Turf shall only be used for functional or recreational purposes.
3. This site is not located within 1 mile of WSHCP or environmentally sensitive areas.
4. This site is not located in a high risk fire zone.
5. Slope planting shall be consistent with minimum standards for Building & Safety erosion control standards (Ordinance 457, Section 33361.1).
6. Trees shall be planted at a minimum of 70' intervals along parkways.
7. No trees shall not be planted in the Tree Exclusion Zone of the County Right-of-Way.
8. No trees shall be planted in the Tree 110'.
9. 2' front yard trees and 1' street tree to be provided.
10. Limit natural plant height to 30" within line-of-sight impact areas, drive entries/ parking slants/corners.
11. 3" minimum depth of shredded bark mulch in all planter areas, excluding turf and hydroseed areas.
12. For slopes 3:1 or steeper, permanent ground cover adequately planted with shrubs and/or trees
13. Plant material and mulch suitable for slope use and prevention of surface erosion
14. Plant selection and supporting notes to ensure full slope coverage within 12 months of planting

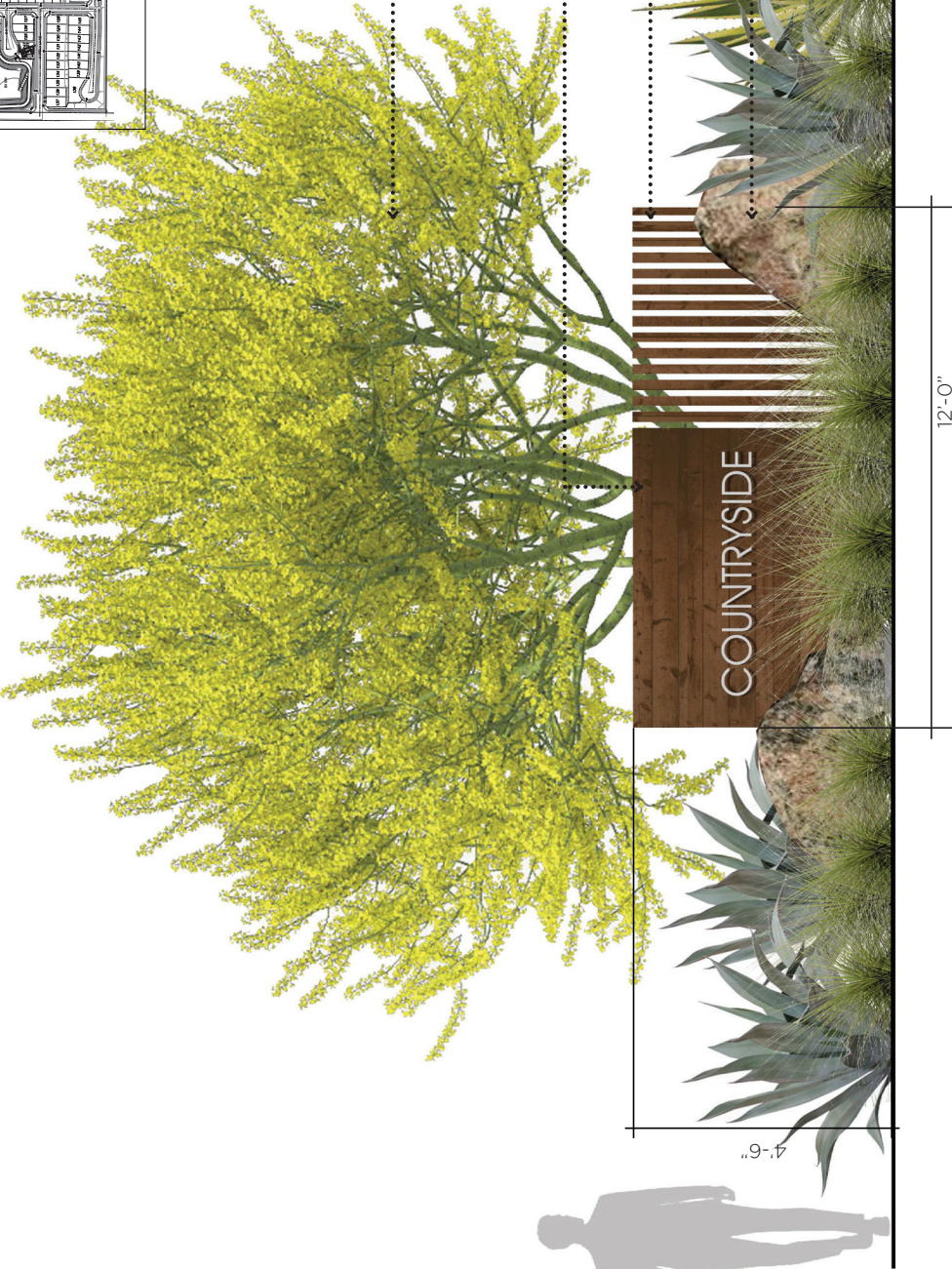
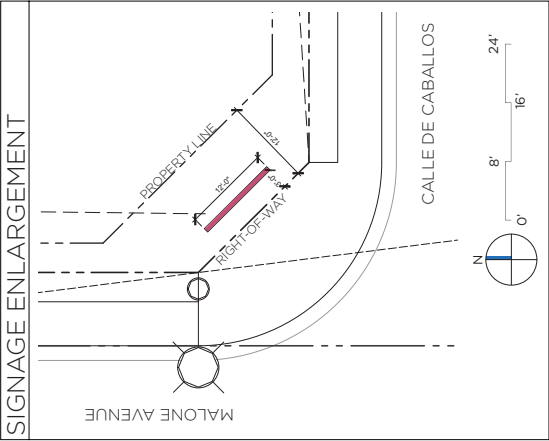
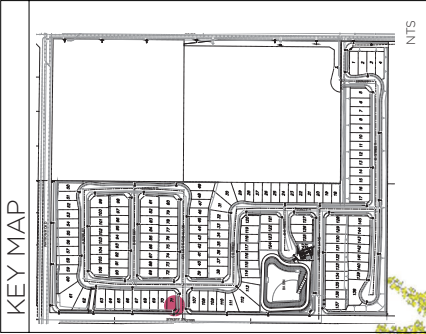
PLANTING NOTES (Continued):

14. Trees at 17750, 17800 & 17900 ft of slope area.
15. Plant material to be grouped into appropriate hydrazones
16. An agronomic soils analysis and recommendations report shall be included on the plans and provide report with landscape construction document set for plan check
17. All plants shall be placed so that the mature width will be equal or less than the width of the planter area it is planted within to limit the required amount of trimming and maintenance.
18. Plants will be checked carefully at plan check for appropriateness to final width of proposed planters at plan check, please only propose plant that will fit within and are appropriate height - without requiring maintenance trimming.



COUNTRYSIDE - PA 22 - TTM 38133  
ENTRY MONUMENTATION

Inspired by the rocky outcrops of The Full Gospel Prayer Mountains, the entry monumentation celebrates the natural beauty and materials of the area. The boulders create a subtle foreground against a metal panel sign with corten steel treatment. A mix of succulents, ornamental grasses and a multi-trunk specimen tree introduces color and softens the monument sign.



Multi-trunk Palo Verde

Metal signage wall with corten steel color/treatment

Metal posts with corten steel color/treatment

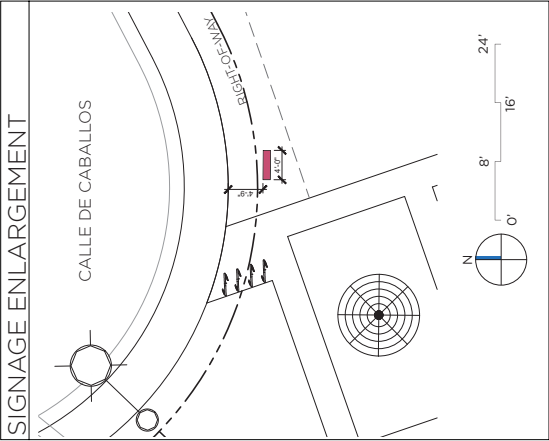
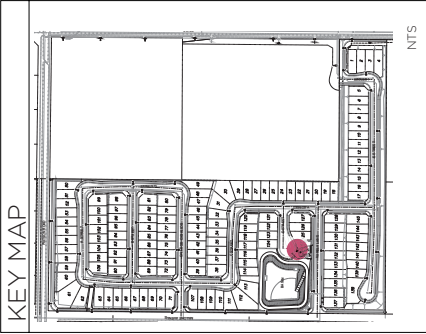
Boulders

Succulent and grasses

NTS

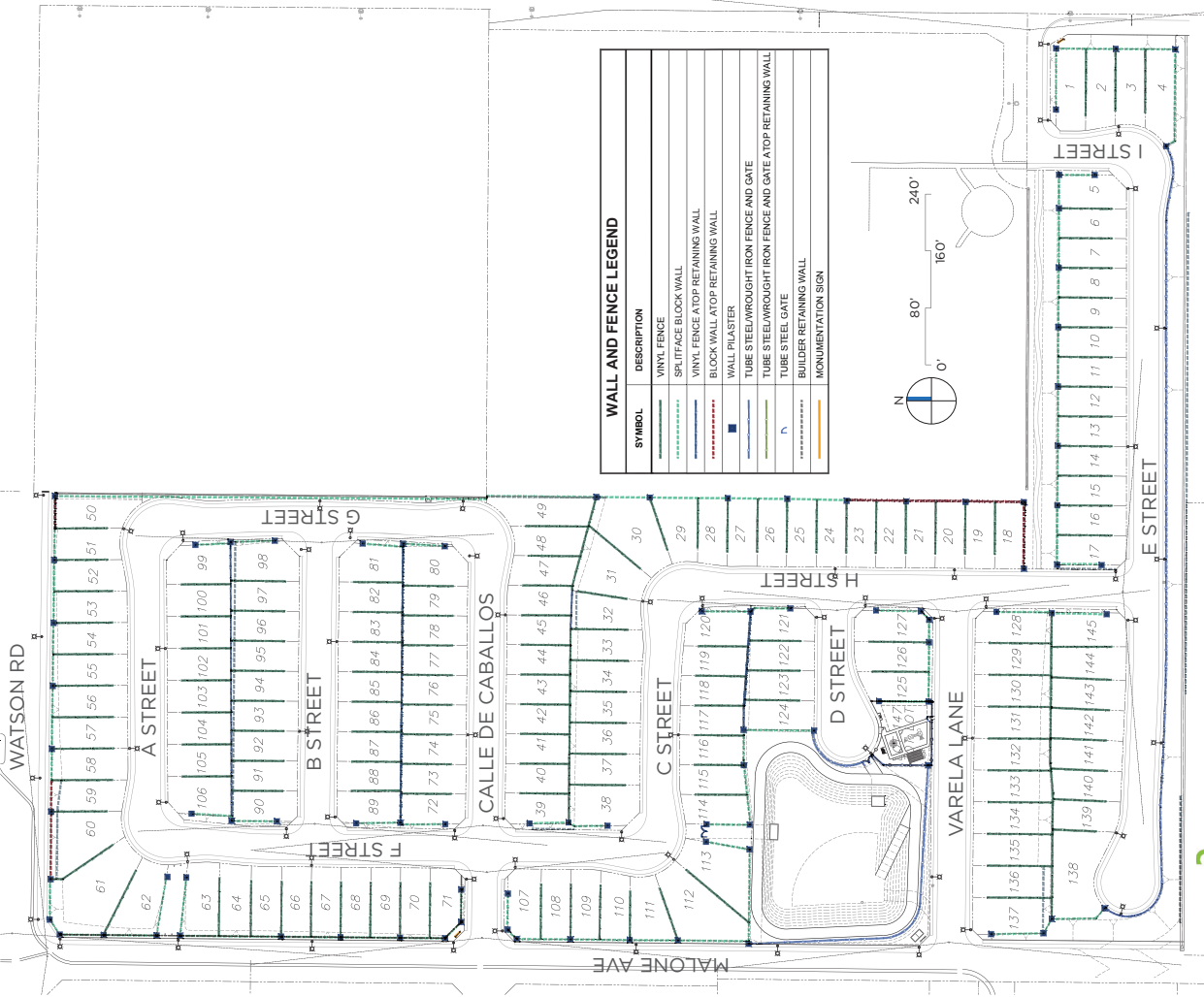
COUNTRYSIDE - PA 22 - TTM 38133  
PARK MONUMENTATION

The park monumentation is a smaller and simpler version of the entry monumentation, establishing appropriate hierarchy and continuity between the two.



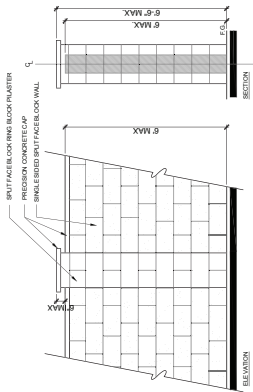


# COUNTRYSIDE - PA 22 - TTM 38133 WALL AND FENCE PLAN

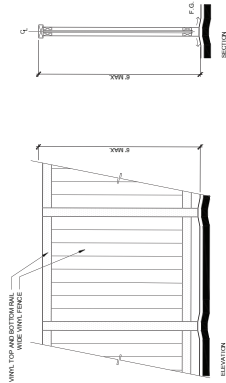


WALL AND FENCE LEGEND	
SYMBOL	DESCRIPTION
	VINYL FENCE
	SPLITFACE BLOCK WALL
	VINYL FENCE ATOP RETAINING WALL
	BLOCK WALL ATOP RETAINING WALL
	WALL PILASTER
	TUBE STEEL WROUGHT IRON FENCE AND GATE
	TUBE STEEL WROUGHT IRON FENCE AND GATE ATOP RETAINING WALL
	BUILDER RETAINING WALL
	MONUMENTATION SIGN

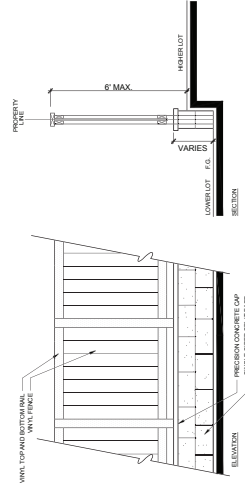
## WALL AND FENCE DETAILS



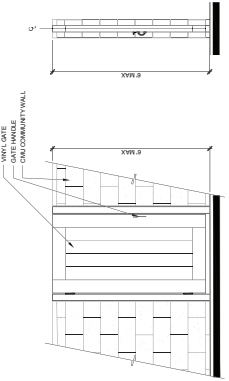
CMU COMMUNITY WALL  
SCALE: 1/2"=1"



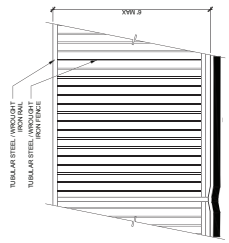
VINYL PRIVACY FENCE  
SCALE: 1/2"=1"



VINYL PRIVACY GATE  
SCALE: 1/2"=1"



TUBE STEEL / WROUGHT IRON FENCE  
SCALE: 1/2"=1"



- NOTE:
1. RETURN WALLS AT FRONT OF HOMES AND WALLS VISIBLE FROM THE STREET SHALL BE 6' HIGH MASONRY / BLOCK WALL.
  2. ALL WALLS, FENCES, GATES, PILASTERS AND SIMILAR DESIGNED WITH MATERIAL AND FINISHES THAT COMPLEMENT PROJECT ARCHITECTURE. ALL WALLS, FENCES, GATES, PILASTERS AND SIMILAR DESIGNED WITH THESE WILL BE SUBJECT TO FINAL REVIEW BY THE CITY AT THE TIME OF CONSTRUCTION DOCUMENT PLAN CHECK. FURTHER DETAILING TO BE CONDUCTED DURING CONSTRUCTION DOCUMENT PHASE FOR FOOTING AND DETAIL ELEMENTS.

\*Tree count is not reflective of the current landscape design

**NOTE**  
PRIVATE HOMEOWNER LOT AND PARKWAY LANDSCAPE TO BE MAINTAINED BY HOMEOWNER. LANDSCAPE AREA PENDING RESIDENCE FOOTPRINT.

~~MOW CURB REQUIRED~~  
MOW CURB REQUIRED BETWEEN  
BETWEEN CURB & HOA MAINTENANCE  
MAINTENANCE AREAS, TYPICAL.

