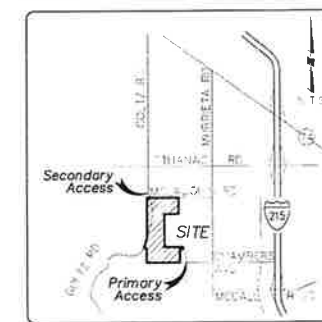
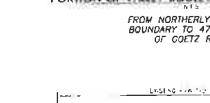
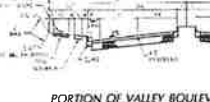


PLANS PREPARED BY:
adkan
ENGINEERS
Civil Engineering • Surveying • Planning
6879 Airport Drive, Riverside, CA 92504
Tel: (951) 688-0241 • Fax: (951) 688-0599



1 EXTENDING LAST W/ "WOMAN"
2 "WOMAN" W/ "WOMAN" (FAMILY) "WOMAN"
3 "WOMAN" W/ "WOMAN" (FAMILY) "WOMAN"
4 "WOMAN" W/ "WOMAN" (FAMILY) "WOMAN"
5 "WOMAN" W/ "WOMAN" (FAMILY) "WOMAN"
6 "WOMAN" W/ "WOMAN" (FAMILY) "WOMAN"
7 "WOMAN" W/ "WOMAN" (FAMILY) "WOMAN"
8 "WOMAN" W/ "WOMAN" (FAMILY) "WOMAN"
9 "WOMAN" W/ "WOMAN" (FAMILY) "WOMAN"
10 "WOMAN" W/ "WOMAN" (FAMILY) "WOMAN"
11 "WOMAN" W/ "WOMAN" (FAMILY) "WOMAN"
12 "WOMAN" W/ "WOMAN" (FAMILY) "WOMAN"
13 "WOMAN" W/ "WOMAN" (FAMILY) "WOMAN"
14 "WOMAN" W/ "WOMAN" (FAMILY) "WOMAN"
15 "WOMAN" W/ "WOMAN" (FAMILY) "WOMAN"
16 "WOMAN" W/ "WOMAN" (FAMILY) "WOMAN"
17 "WOMAN" W/ "WOMAN" (FAMILY) "WOMAN"
18 "WOMAN" W/ "WOMAN" (FAMILY) "WOMAN"
19 "WOMAN" W/ "WOMAN" (FAMILY) "WOMAN"
20 "WOMAN" W/ "WOMAN" (FAMILY) "WOMAN"
21 "WOMAN" W/ "WOMAN" (FAMILY) "WOMAN"
22 "WOMAN" W/ "WOMAN" (FAMILY) "WOMAN"
23 "WOMAN" W/ "WOMAN" (FAMILY) "WOMAN"
24 "WOMAN" W/ "WOMAN" (FAMILY) "WOMAN"
25 "WOMAN" W/ "WOMAN" (FAMILY) "WOMAN"
26 "WOMAN" W/ "WOMAN" (FAMILY) "WOMAN"
27 "WOMAN" W/ "WOMAN" (FAMILY) "WOMAN"
28 "WOMAN" W/ "WOMAN" (FAMILY) "WOMAN"
29 "WOMAN" W/ "WOMAN" (FAMILY) "WOMAN"
30 "WOMAN" W/ "WOMAN" (FAMILY) "WOMAN"
31 "WOMAN" W/ "WOMAN" (FAMILY) "WOMAN"
32 "WOMAN" W/ "WOMAN" (FAMILY) "WOMAN"
33 "WOMAN" W/ "WOMAN" (FAMILY) "WOMAN"
34 "WOMAN" W/ "WOMAN" (FAMILY) "WOMAN"
35 "WOMAN" W/ "WOMAN" (FAMILY) "WOMAN"
36 "WOMAN" W/ "WOMAN" (FAMILY) "WOMAN"
37 "WOMAN" W/ "WOMAN" (FAMILY) "WOMAN"
38 "WOMAN" W/ "WOMAN" (FAMILY) "WOMAN"
39 "WOMAN" W/ "WOMAN" (FAMILY) "WOMAN"
40 "WOMAN" W/ "WOMAN" (FAMILY) "WOMAN"
41 "WOMAN" W/ "WOMAN" (FAMILY) "WOMAN"
42 "WOMAN" W/ "WOMAN" (FAMILY) "WOMAN"
43 "WOMAN" W/ "WOMAN" (FAMILY) "WOMAN"
44 "WOMAN" W/ "WOMAN" (FAMILY) "WOMAN"
45 "WOMAN" W/ "WOMAN" (FAMILY) "WOMAN"
46 "WOMAN" W/ "WOMAN" (FAMILY) "WOMAN"
47 "WOMAN" W/ "WOMAN" (FAMILY) "WOMAN"
48 "WOMAN" W/ "WOMAN" (FAMILY) "WOMAN"
49 "WOMAN" W/ "WOMAN" (FAMILY) "WOMAN"
50 "WOMAN" W/ "WOMAN" (FAMILY) "WOMAN"

[illegible][illegible][illegible]

CUT	99.775 CN
ISI	99.775 CN
EXPORT/IMPORT	RCN

[illegible]

ARMED BY STATE THAT THE MAP WAS OBTAINED UNDER
IN A PERSON AND THAT THE OWNER OF THE MAP WAS

DATE: _____

SCALE _____ 1" = 200'
DATE _____ 06/29/15
W.O. _____ 1429-S
GROSS AREA _____ 240.3 AC
CONTOUR INTERVAL _____ 5'
TOTAL LOTS 756 RESIDENTIAL LOTS
DENSITY 318 HOMES PER AC

TENTATIVE TRACT
NO. 36658
CITY OF MENEFEE

AMENDMENT #1
SHEET 1 OF 6

STATISTICAL SUMMARY

5000 MIN. LOT SIZE

[illegible]REVISED
SEE SHEETS 5 & 6

5500 MIN LOT SIZE

LOT	NET SA	OWNER	USE	LOT NO	NET SA	OWNER	USE	LOT NO	NET SA	OWNER	USE	LOT NO	NET SA	OWNER	USE
102	5,940	1,111	RESIDENTIAL	103	7,939	1,117	RESIDENTIAL	104	6,912	1,117	RESIDENTIAL	105	6,912	1,117	RESIDENTIAL
107	5,940	1,111	RESIDENTIAL	108	7,939	1,117	RESIDENTIAL	109	6,912	1,117	RESIDENTIAL	110	6,912	1,117	RESIDENTIAL
112	5,940	1,111	RESIDENTIAL	113	7,939	1,117	RESIDENTIAL	114	6,912	1,117	RESIDENTIAL	115	6,912	1,117	RESIDENTIAL
121	5,940	1,111	RESIDENTIAL	122	7,939	1,117	RESIDENTIAL	123	6,912	1,117	RESIDENTIAL	124	6,912	1,117	RESIDENTIAL
130	5,940	1,111	RESIDENTIAL	131	7,939	1,117	RESIDENTIAL	132	6,912	1,117	RESIDENTIAL	133	6,912	1,117	RESIDENTIAL
139	5,940	1,111	RESIDENTIAL	140	7,939	1,117	RESIDENTIAL	141	6,912	1,117	RESIDENTIAL	142	6,912	1,117	RESIDENTIAL
148	5,940	1,111	RESIDENTIAL	149	7,939	1,117	RESIDENTIAL	150	6,912	1,117	RESIDENTIAL	151	6,912	1,117	RESIDENTIAL
157	5,940	1,111	RESIDENTIAL	158	7,939	1,117	RESIDENTIAL	159	6,912	1,117	RESIDENTIAL	160	6,912	1,117	RESIDENTIAL
166	5,940	1,111	RESIDENTIAL	167	7,939	1,117	RESIDENTIAL	168	6,912	1,117	RESIDENTIAL	169	6,912	1,117	RESIDENTIAL
179	5,940	1,111	RESIDENTIAL	180	7,939	1,117	RESIDENTIAL	181	6,912	1,117	RESIDENTIAL	182	6,912	1,117	RESIDENTIAL
188	5,940	1,111	RESIDENTIAL	189	7,939	1,117	RESIDENTIAL	190	6,912	1,117	RESIDENTIAL	191	6,912	1,117	RESIDENTIAL
197	5,940	1,111	RESIDENTIAL	198	7,939	1,117	RESIDENTIAL	199	6,912	1,117	RESIDENTIAL	200	6,912	1,117	RESIDENTIAL
210	5,940	1,111	RESIDENTIAL	211	7,939	1,117	RESIDENTIAL	212	6,912	1,117	RESIDENTIAL	213	6,912	1,117	RESIDENTIAL
219	5,940	1,111	RESIDENTIAL	220	7,939	1,117	RESIDENTIAL	221	6,912	1,117	RESIDENTIAL	222	6,912	1,117	RESIDENTIAL
228	5,940	1,111	RESIDENTIAL	229	7,939	1,117	RESIDENTIAL	230	6,912	1,117	RESIDENTIAL	231	6,912	1,117	RESIDENTIAL
237	5,940	1,111	RESIDENTIAL	238	7,939	1,117	RESIDENTIAL	239	6,912	1,117	RESIDENTIAL	240	6,912	1,117	RESIDENTIAL
246	5,940	1,111	RESIDENTIAL	247	7,939	1,117	RESIDENTIAL	248	6,912	1,117	RESIDENTIAL	249	6,912	1,117	RESIDENTIAL
255	5,940	1,111	RESIDENTIAL	256	7,939	1,117	RESIDENTIAL	257	6,912	1,117	RESIDENTIAL	258	6,912	1,117	RESIDENTIAL
264	5,940	1,111	RESIDENTIAL	265	7,939	1,117	RESIDENTIAL	266	6,912	1,117	RESIDENTIAL	267	6,912	1,117	RESIDENTIAL
273	5,940	1,111	RESIDENTIAL	274	7,939	1,117	RESIDENTIAL	275	6,912	1,117	RESIDENTIAL	276	6,912	1,117	RESIDENTIAL
282	5,940	1,111	RESIDENTIAL	283	7,939	1,117	RESIDENTIAL	284	6,912	1,117	RESIDENTIAL	285	6,912	1,117	RESIDENTIAL
291	5,940	1,111	RESIDENTIAL	292	7,939	1,117	RESIDENTIAL	293	6,912	1,117	RESIDENTIAL	294	6,912	1,117	RESIDENTIAL
300	5,940	1,111	RESIDENTIAL	301	7,939	1,117	RESIDENTIAL	302	6,912	1,117	RESIDENTIAL	303	6,912	1,117	RESIDENTIAL
309	5,940	1,111	RESIDENTIAL	310	7,939	1,117	RESIDENTIAL	311	6,912	1,117	RESIDENTIAL	312	6,912	1,117	RESIDENTIAL
318	5,940	1,111	RESIDENTIAL	319	7,939	1,117	RESIDENTIAL	320	6,912	1,117	RESIDENTIAL	321	6,912	1,117	RESIDENTIAL
327	5,940	1,111	RESIDENTIAL	328	7,939	1,117	RESIDENTIAL	329	6,912	1,117	RESIDENTIAL	330	6,912	1,117	RESIDENTIAL
336	5,940	1,111	RESIDENTIAL	337	7,939	1,117	RESIDENTIAL	338	6,912	1,117	RESIDENTIAL	339	6,912	1,117	RESIDENTIAL
345	5,940	1,111	RESIDENTIAL	346	7,939	1,117	RESIDENTIAL	347	6,912	1,117	RESIDENTIAL	348	6,912	1,117	RESIDENTIAL
354	5,940	1,111	RESIDENTIAL	355	7,939	1,117	RESIDENTIAL	356	6,912	1,117	RESIDENTIAL	357	6,912	1,117	RESIDENTIAL
363	5,940	1,111	RESIDENTIAL	364	7,939	1,117	RESIDENTIAL	365	6,912	1,117	RESIDENTIAL	366	6,912	1,117	RESIDENTIAL
372	5,940	1,111	RESIDENTIAL	373	7,939	1,117	RESIDENTIAL	374	6,912	1,117	RESIDENTIAL	375	6,912	1,117	RESIDENTIAL
381	5,940	1,111	RESIDENTIAL	382	7,939	1,117	RESIDENTIAL	383	6,912	1,117	RESIDENTIAL	384	6,912	1,117	RESIDENTIAL
390	5,940	1,111	RESIDENTIAL	391	7,939	1,117	RESIDENTIAL	392	6,912	1,117	RESIDENTIAL	393	6,912	1,117	RESIDENTIAL
399	5,940	1,111	RESIDENTIAL	400	7,939	1,117	RESIDENTIAL	401	6,912	1,117	RESIDENTIAL	402	6,912	1,117	RESIDENTIAL
408	5,940	1,111	RESIDENTIAL	409	7,939	1,117	RESIDENTIAL	410	6,912	1,117	RESIDENTIAL	411	6,912	1,117	RESIDENTIAL
417	5,940	1,111	RESIDENTIAL	418	7,939	1,117	RESIDENTIAL	419	6,912	1,117	RESIDENTIAL	420	6,912	1,117	RESIDENTIAL
426	5,940	1,111	RESIDENTIAL	427	7,939	1,117	RESIDENTIAL	428	6,912	1,117	RESIDENTIAL	429	6,912	1,117	RESIDENTIAL
435	5,940	1,111	RESIDENTIAL	436	7,939	1,117	RESIDENTIAL	437	6,912	1,117	RESIDENTIAL	438	6,912	1,117	RESIDENTIAL
444	5,940	1,111	RESIDENTIAL	445	7,939	1,117	RESIDENTIAL	446	6,912	1,117	RESIDENTIAL	447	6,912	1,117	RESIDENTIAL
453	5,940	1,111	RESIDENTIAL	454	7,939	1,117	RESIDENTIAL	455	6,912	1,117	RESIDENTIAL	456	6,912	1,117	RESIDENTIAL
462	5,940	1,111	RESIDENTIAL	463	7,939	1,117	RESIDENTIAL	464	6,912	1,117	RESIDENTIAL	465	6,912	1,117	RESIDENTIAL
471	5,940	1,111	RESIDENTIAL	472	7,939	1,117	RESIDENTIAL	473	6,912	1,117	RESIDENTIAL	474	6,912	1,117	RESIDENTIAL
480	5,940	1,111	RESIDENTIAL	481	7,939	1,117	RESIDENTIAL	482	6,912	1,117	RESIDENTIAL	483	6,912	1,117	RESIDENTIAL
489	5,940	1,111	RESIDENTIAL	490	7,939	1,117	RESIDENTIAL	491	6,912	1,117	RESIDENTIAL	492	6,912	1,117	RESIDENTIAL
498	5,940	1,111	RESIDENTIAL	499	7,939	1,117	RESIDENTIAL	500	6,912	1,117	RESIDENTIAL	501	6,912	1,117	RESIDENTIAL
507	5,940	1,111	RESIDENTIAL	508	7,939	1,117	RESIDENTIAL	509	6,912	1,117	RESIDENTIAL	510	6,912	1,117	RESIDENTIAL
516	5,940	1,111	RESIDENTIAL	517	7,939	1,117	RESIDENTIAL	518	6,912	1,117	RESIDENTIAL	519	6,912	1,117	RESIDENTIAL
525	5,940	1,111	RESIDENTIAL	526	7,939	1,117	RESIDENTIAL	527	6,912	1,117	RESIDENTIAL	528	6,912	1,117	RESIDENTIAL
534	5,940	1,111	RESIDENTIAL	535	7,939	1,117	RESIDENTIAL	536	6,912	1,117	RESIDENTIAL	537	6,912	1,117	RESIDENTIAL
543	5,940	1,111	RESIDENTIAL	544	7,939	1,117	RESIDENTIAL	545	6,912	1,117	RESIDENTIAL	546	6,912	1,117	RESIDENTIAL
552	5,940	1,111	RESIDENTIAL	553	7,939	1,117	RESIDENTIAL	554	6,912	1,117	RESIDENTIAL	555	6,912	1,117	RESIDENTIAL
561	5,940	1,111	RESIDENTIAL	562	7,939	1,117	RESIDENTIAL	563	6,912	1,117	RESIDENTIAL	564	6,912	1,117	RESIDENTIAL
570	5,940	1,111	RESIDENTIAL	571	7,939	1,117	RESIDENTIAL	572	6,912	1,117	RESIDENTIAL	573	6,912	1,117	RESIDENTIAL
579	5,940	1,111	RESIDENTIAL	580	7,939	1,117	RESIDENTIAL	581	6,912	1,117	RESIDENTIAL	582	6,912	1,117	RESIDENTIAL
588	5,940	1,111	RESIDENTIAL	589	7,939	1,117	RESIDENTIAL	590	6,912	1,117	RESIDENTIAL	591	6,912	1,117	RESIDENTIAL
597	5,940	1,111	RESIDENTIAL	598	7,939	1,117	RESIDENTIAL	599	6,912	1,117	RESIDENTIAL	600	6,912	1,117	RESIDENTIAL
606	5,940	1,111	RESIDENTIAL	607	7,939	1,117	RESIDENTIAL	608	6,912	1,117	RESIDENTIAL	609	6,912	1,117	RESIDENTIAL
615	5,940	1,111	RESIDENTIAL	616	7,939	1,117	RESIDENTIAL	617	6,912	1,117	RESIDENTIAL	618	6,912	1,117	RESIDENTIAL
624	5,940	1,111	RESIDENTIAL	625	7,939	1,117	RESIDENTIAL	626	6,912	1,117	RESIDENTIAL	627	6,912	1,117	RESIDENTIAL
633	5,940	1,111	RESIDENTIAL	634	7,939	1,117	RESIDENTIAL	635	6,912	1,117	RESIDENTIAL	636	6,912	1,117	RESIDENTIAL
642	5,940	1,111	RESIDENTIAL	643	7,939	1,117	RESIDENTIAL	644	6,912	1,117	RESIDENTIAL	645	6,912	1,117	RESIDENTIAL
651	5,940	1,111	RESIDENTIAL	652	7,939	1,117	RESIDENTIAL	653	6,912	1,117	RESIDENTIAL	654	6,912	1,117	RESIDENTIAL
660	5,940	1,111	RESIDENTIAL	661	7,939	1,117	RESIDENTIAL	662	6,912	1,117	RESIDENTIAL	663	6,912	1,117	RESIDENTIAL
669	5,940	1,111	RESIDENTIAL	670	7,939	1,117	RESIDENTIAL	671	6,912	1,117	RESIDENTIAL	672	6,912	1,117	RESIDENTIAL
678	5,940	1,111	RESIDENTIAL	679	7,939	1,117	RESIDENTIAL	680	6,912	1,117	RESIDENTIAL	681	6,912	1,117	RESIDENTIAL
687	5,940	1,111	RESIDENTIAL	688	7,939	1,117	RESIDENTIAL	689	6,912	1,117	RESIDENTIAL	690	6,912	1,117	RESIDENTIAL
696	5,940	1,111	RESIDENTIAL	697	7,939	1,117	RESIDENTIAL	698	6,912	1,117	RESIDENTIAL	699	6,912	1,117	RESIDENTIAL
705	5,940	1,111	RESIDENTIAL	706	7,939	1,117	RESIDENTIAL	707	6,912	1,117	RESIDENTIAL	708	6,912	1,117	RESIDENTIAL
714	5,940	1,111	RESIDENTIAL	715	7,939	1,117	RESIDENTIAL	716	6,912	1,117	RESIDENTIAL	717	6,912	1,117	RESIDENTIAL
723	5,940	1,111	RESIDENTIAL	724	7,939	1,117	RESIDENTIAL	725	6,912	1,117	RESIDENTIAL	726	6,912	1,117	RESIDENTIAL
732	5,940	1,111	RESIDENTIAL	733	7,939	1,117	RESIDENTIAL	734	6,912	1,117	RESIDENTIAL	735	6,912	1,117	RESIDENTIAL
741	5,940	1,111	RESIDENTIAL	742	7,939	1,117	RESIDENTIAL	743	6,912	1,117	RESIDENTIAL	744	6,912	1,117	RESIDENTIAL
750	5,940	1,111	RESIDENTIAL	751	7,939	1,117	RESIDENTIAL	752	6,912	1,117	RESIDENTIAL	753	6,912	1,117	RESIDENTIAL
759	5,940	1,111	RESIDENTIAL	760	7,939	1,117	RESIDENTIAL	761	6,912	1,117	RESIDENTIAL	762	6,912	1,117	RESIDENTIAL
768	5,940	1,111	RESIDENTIAL	769	7,939	1,117	RESIDENTIAL	770	6,912	1,117	RESIDENTIAL	771	6,912	1,117	RESIDENTIAL
777	5,940	1,111	RESIDENTIAL	778	7,939	1,117	RESIDENTIAL	779	6,912	1,117	RESIDENTIAL	780	6,912	1,117	RESIDENTIAL
786	5,940	1,111	RESIDENTIAL	787	7,939	1,117	RESIDENTIAL	788	6,912	1,117	RESIDENTIAL	789	6,912	1,117	RESIDENTIAL
795	5,940	1,111	RESIDENTIAL	796	7,939	1,117	RESIDENTIAL	797	6,912	1,117	RESIDENTIAL	798	6,912	1,117	RESIDENTIAL
804	5,940	1,111	RESIDENTIAL	805	7,939	1,117	RESIDENTIAL	806	6,912	1,117	RESIDENTIAL	807	6,912	1,117	RESIDENTIAL
813	5,940	1,111	RESIDENTIAL	814	7,939	1,117	RESIDENTIAL	815	6,912	1,117	RESIDENTIAL	816	6,912	1,117	RESIDENTIAL
822	5,940	1,111	RESIDENTIAL	823	7,939	1,117	RESIDENTIAL	824	6,912	1,117	RESIDENTIAL	825	6,912	1,117	RESIDENTIAL
831	5,940	1,111	RESIDENTIAL	832	7,939	1,117	RESIDENTIAL	833	6,912	1,117	RESIDENTIAL	834	6,912	1,117	RESIDENTIAL
840	5,940	1,111	RESIDENTIAL	841	7,939	1,117	RESIDENTIAL	842	6,912	1,117	RESIDENTIAL	843	6,912	1,117	

TOTAL 1993-94	733,900
OUTSIDE 1993-94	7,400
TOTAL SPARE PARTS	641,300
SPARE PARTS PRICE	96,370

6500 MIN LOT SIZE

[illegible]

TOTAL NET S.F.	6,772.96
AVERAGE NET S.F.	9.35
TOTAL USABLE PRODUCE	680.352
AVERAGE USABLE PRODUCE	9.376

10,000 MIN LOT SIZE

[illegible]

TOTAL NET LE	1,711.4
AVERAGE NET LE	10,500
TOTAL UPRATE PAID LE	1,010.26
AVERAGE UPRATE PAID LE	\$700

OPEN SPACE LOTS

LOT #	1	2	3	4	5	6	7	8	9	10	11	12	13	14	15	16	17	18	19	20	21	22	23	24	25	26	27	28	29	30	31	32	33	34	35	36	37	38	39	40	41	42	43	44	45	46	47	48	49	50	51	52	53	54	55	56	57	58	59	60	61	62	63	64	65	66	67	68	69	70	71	72	73	74	75	76	77	78	79	80	81	82	83	84	85	86	87	88	89	90	91	92	93	94	95	96	97	98	99	100
101	2	1	3	4	5	6	7	8	9	10	11	12	13	14	15	16	17	18	19	20	21	22	23	24	25	26	27	28	29	30	31	32	33	34	35	36	37	38	39	40	41	42	43	44	45	46	47	48	49	50	51	52	53	54	55	56	57	58	59	60	61	62	63	64	65	66	67	68	69	70	71	72	73	74	75	76	77	78	79	80	81	82	83	84	85	86	87	88	89	90	91	92	93	94	95	96	97	98	99	100
102	1	2	3	4	5	6	7	8	9	10	11	12	13	14	15	16	17	18	19	20	21	22	23	24	25	26	27	28	29	30	31	32	33	34	35	36	37	38	39	40	41	42	43	44	45	46	47	48	49	50	51	52	53	54	55	56	57	58	59	60	61	62	63	64	65	66	67	68	69	70	71	72	73	74	75	76	77	78	79	80	81	82	83	84	85	86	87	88	89	90	91	92	93	94	95	96	97	98	99	100
103	1	2	3	4	5	6	7	8	9	10	11	12	13	14	15	16	17	18	19	20	21	22	23	24	25	26	27	28	29	30	31	32	33	34	35	36	37	38	39	40	41	42	43	44	45	46	47	48	49	50	51	52	53	54	55	56	57	58	59	60	61	62	63	64	65	66	67	68	69	70	71	72	73	74	75	76	77	78	79	80	81	82	83	84	85	86	87	88	89	90	91	92	93	94	95	96	97	98	99	100
104	1	2	3	4	5	6	7	8	9	10	11	12	13	14	15	16	17	18	19	20	21	22	23	24	25	26	27	28	29	30	31	32	33	34	35	36	37	38	39	40	41	42	43	44	45	46	47	48	49	50	51	52	53	54	55	56	57	58	59	60	61	62	63	64	65	66	67	68	69	70	71	72	73	74	75	76	77	78	79	80	81	82	83	84	85	86	87	88	89	90	91	92	93	94	95	96	97	98	99	100
105	1	2	3	4	5	6	7	8	9	10	11	12	13	14	15	16	17	18	19	20	21	22	23	24	25	26	27	28	29	30	31	32	33	34	35	36	37	38	39	40	41	42	43	44	45	46	47	48	49	50	51	52	53	54	55	56	57	58	59	60	61	62	63	64	65	66	67	68	69	70	71	72	73	74	75	76	77	78	79	80	81	82	83	84	85	86	87	88	89	90	91	92	93	94	95	96	97	98	99	100
106	1	2	3	4	5	6	7	8	9	10	11	12	13	14	15	16	17	18	19	20	21	22	23	24	25	26	27	28	29	30	31	32	33	34	35	36	37	38	39	40	41	42	43	44	45	46	47	48	49	50	51	52	53	54	55	56	57	58	59	60	61	62	63	64	65	66	67	68	69	70	71	72	73	74	75	76	77	78	79	80	81	82	83	84	85	86	87	88	89	90	91	92	93	94	95	96	97	98	99	100
107	1	2	3	4	5	6	7	8	9	10	11	12	13	14	15	16	17	18	19	20	21	22	23	24	25	26	27	28	29	30	31	32	33	34	35	36	37	38	39	40	41	42	43	44	45	46	47	48	49	50	51	52	53	54	55	56	57	58	59	60	61	62	63	64	65	66	67	68	69	70	71	72	73	74	75	76	77	78	79	80	81	82	83	84	85	86	87	88	89	90	91	92	93	94	95	96	97	98	99	100
108	1	2	3	4	5	6	7	8	9	10	11	12	13	14	15	16	17	18	19	20	21	22	23	24	25	26	27	28	29	30	31	32	33	34	35	36	37	38	39	40	41	42	43	44	45	46	47	48	49	50	51	52	53	54	55	56	57	58	59	60	61	62	63	64	65	66	67	68	69	70	71	72	73	74	75	76	77	78	79	80	81	82	83	84	85	86	87	88	89	90	91	92	93	94	95	96	97	98	99	100
109	1	2	3	4	5	6	7	8	9	10	11	12	13	14	15	16	17	18	19	20	21	22	23	24	25	26	27	28	29	30	31	32	33	34	35	36	37	38	39	40	41	42	43	44	45	46	47	48	49	50	51	52	53	54	55	56	57	58	59	60	61	62	63	64	65	66	67	68	69	70	71	72	73	74	75	76	77	78	79	80	81	82	83	84	85	86	87	88	89	90	91	92	93	94	95	96	97	98	99	100
110	1	2	3	4	5	6	7	8	9	10	11	12	13	14	15	16	17	18	19	20	21	22	23	24	25	26	27	28	29	30	31	32	33	34	35	36	37	38	39	40	41	42	43	44	45	46	47	48	49	50	51	52	53	54	55	56	57	58	59	60	61	62	63	64	65	66	67	68	69	70	71	72	73	74	75	76	77	78	79	80	81	82	83	84	85	86	87	88	89	90	91	92	93	94	95	96	97	98	99	100
111	1	2	3	4	5	6	7	8	9	10	11	12	13	14	15	16	17	18	19	20	21	22	23	24	25	26	27	28	29	30	31	32	33	34	35	36	37	38	39	40	41	42	43	44	45	46	47	48	49	50	51	52	53	54	55	56	57	58	59	60	61	62	63	64	65	66	67	68	69	70	71	72	73	74	75	76	77	78	79	80	81	82	83	84	85	86	87	88	89	90	91	92	93	94	95	96	97	98	99	100
112	1	2	3	4	5	6	7	8	9	10	11	12	13	14	15	16	17	18	19	20	21	22	23	24	25	26	27	28	29	30	31	32	33	34	35	36	37	38	39	40	41	42	43	44	45	46	47	48	49	50	51	52	53	54	55	56	57	58	59	60	61	62	63	64	65	66	67	68	69	70	71	72	73	74	75	76	77	78	79	80	81	82	83	84	85	86	87	88	89	90	91	92	93	94	95	96	97	98	99	100
113	1	2	3	4	5	6	7	8	9	10	11	12	13	14	15	16	17	18	19	20	21	22	23	24	25	26	27	28	29	30	31	32	33	34	35	36	37	38	39	40	41	42	43	44	45	46	47	48	49	50	51	52	53	54	55	56	57	58	59	60	61	62	63	64	65	66	67	68	69	70	71	72	73	74	75	76	77	78	79	80	81	82	83	84	85	86	87	88	89	90	91	92	93	94	95	96	97	98	99	100
114	1	2	3	4	5	6	7	8	9	10	11	12	13	14	15	16	17	18	19	20	21	22	23	24	25	26	27	28	29	30	31	32	33	34	35	36	37	38	39	40	41	42	43	44	45	46	47	48	49	50	51	52	53	54	55	56	57	58	59	60	61	62	63	64	65	66	67	68	69	70	71	72	73	74	75	76	77	78	79	80	81	82	83	84	85	86	87	88	89	90	91	92	93	94	95	96	97	98	99	100
115	1	2	3	4	5	6	7	8	9	10	11	12	13	14	15	16	17	18	19	20	21	22	23	24	25	26	27	28	29	30	31	32	33	34	35	36	37	38	39	40	41	42	43	44	45	46	47	48	49	50	51	52	53	54	55	56	57	58	59	60	61	62	63	64	65	66	67	68	69	70	71	72	73	74	75	76	77	78	79	80	81	82	83	84	85	86	87	88	89	90	91	92	93	94	95	96	97	98	99	100
116	1	2	3	4	5	6	7	8	9	10	11	12	13	14	15	16	17	18	19	20	21	22	23	24	25	26	27	28	29	30	31	32	33	34	35	36	37	38	39	40	41	42	43	44	45	46	47	48	49	50	51	52	53	54	55	56	57	58	59	60	61	62	63	64	65	66	67	68	69	70	71	72	73	74	75	76	77	78	79	80	81	82	83	84	85	86	87	88	89	90	91	92	93	94	95	96	97	98	99	100
117	1	2	3	4	5	6	7	8	9	10	11	12	13	14	15	16	17	18	19	20	21	22	23	24	25	26	27	28	29	30	31	32	33	34	35	36	37	38	39	40	41	42	43	44	45	46	47	48	49	50	51	52	53	54	55	56	57	58	59																																									

REVISED
SEE SHEET 5 & 6

RESIDENTIAL LOTS

TOTAL WATER	1.06227%
AVERAGE NETS	1.4%

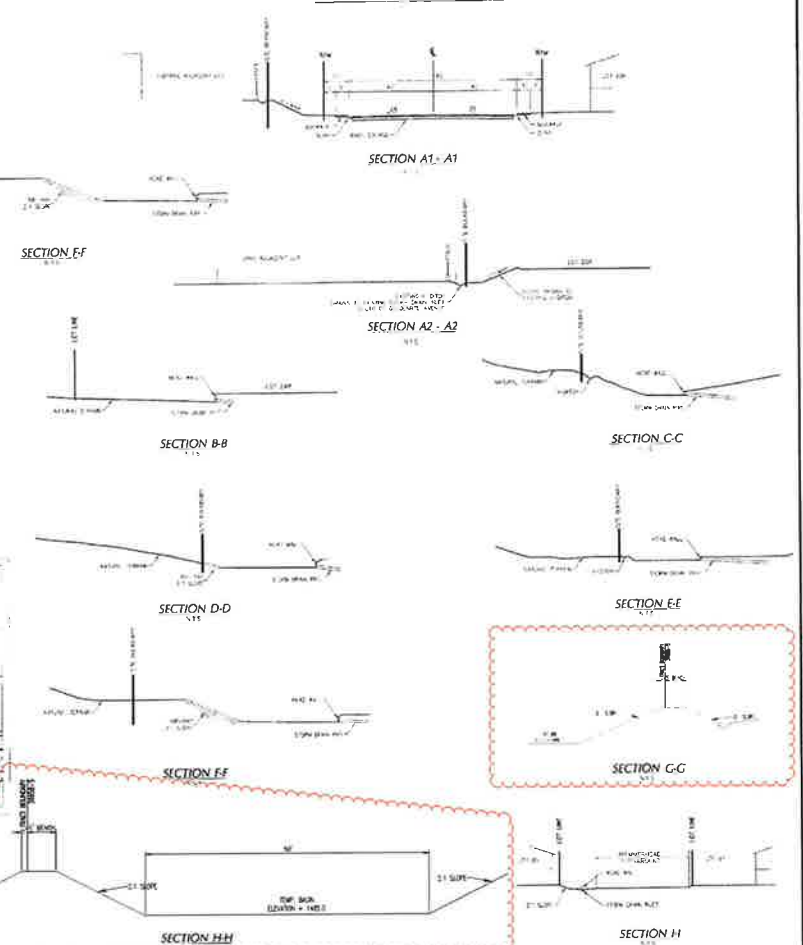
SUMMARY OF ALL LOTS

LAND USE	TOTAL AREA (1)
RECREATIONAL	179.75
PARK	25.90
GOLF	52.61
STORAGE/DEVELOP	2.41
OPEN SPACE/LANDSCAPE	14.83
ROAD	6.92
WATER	0.00



EMERGENCY VEHICLE ACCESS DETAIL

SITE SECTIONS



OFFSITE GRADING DETAIL McLAUGHLIN & BEYERS

OWNER:

CIMARRON RIDGE, LLC
2900 Adams Street, Suite C-25
Riverside, CA 92504
Tel (951) 354-2121

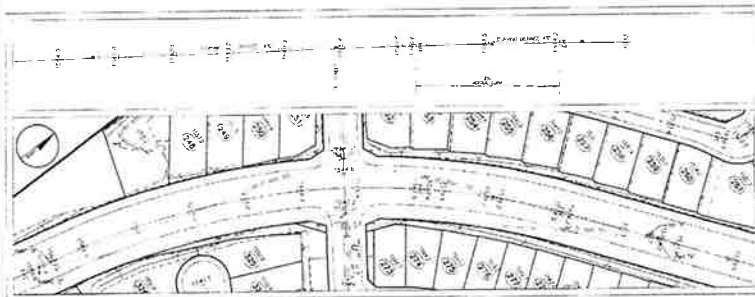
PREPARED BY:

PREPARED FOR:
Van Daele Homes
2900 Adams Street, Suite C-25
Riverside, CA 92504
Tel: (951) 354-2121

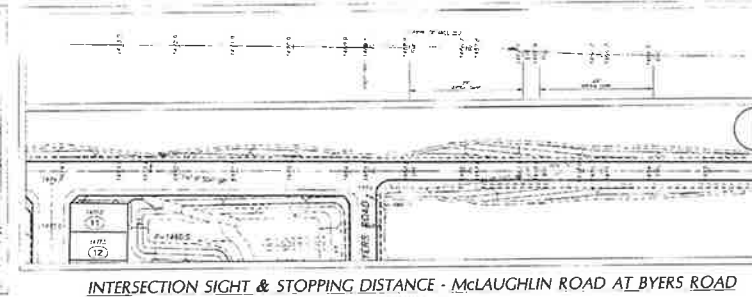
H&A

TENTATIVE TRACT
NO. 36658 **AMENDMENT #1**
CITY OF MENAFA **SHEET 2 OF 6**

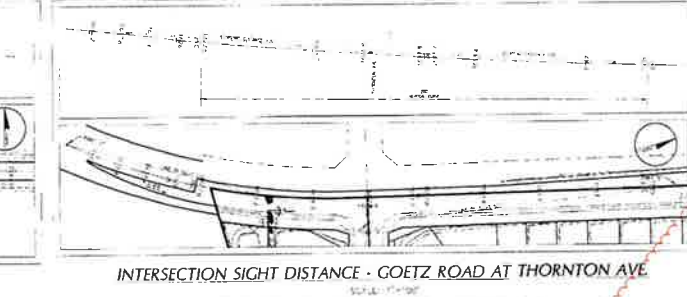
SCALE _____ N.T.S.
DATE _____ 06/29/15
W.O. _____ 1429.5
GROSS AREA _____ 240.3 AC=
CONJOUR INTERVAL _____ 5'
TOTAL LOTS _____ 754 RESIDENTIAL



INTERSECTION SIGHT DISTANCE - GOETZ ROAD



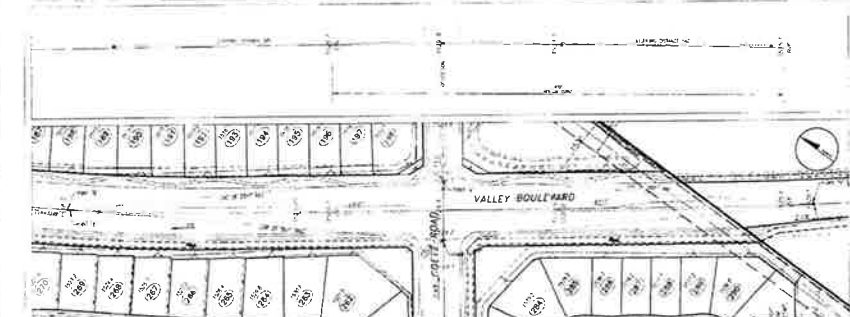
INTERSECTION SIGHT & STOPPING DISTANCE - McLAUGHLIN ROAD AT BYERS ROAD



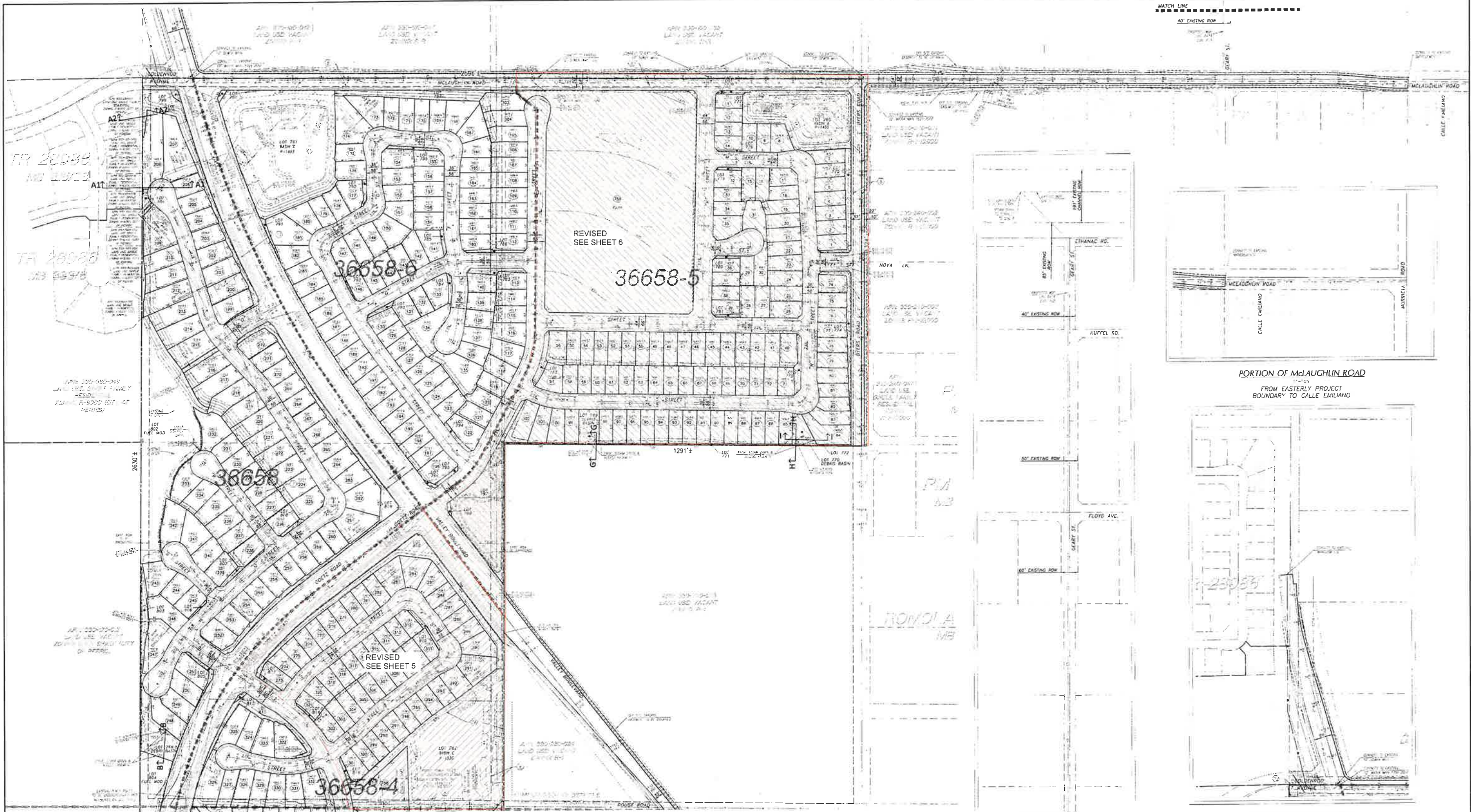
INTERSECTION SIGHT DISTANCE - GOETZ ROAD AT THORNTON AVE



INTERSECTION SIGHT DISTANCE - VALLEY BOULEVARD

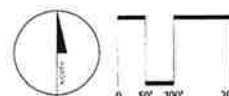


INTERSECTION SIGHT DISTANCE - VALLEY BOULEVARD



LEGEND

- PROPOSED MDP LINE A-14
- PROPOSED MDP LINE A-15
- PROPOSED MDP LINE A-16
- PROPOSED MDP LINE A-17
- PROPOSED MDP LINE A-18
- PROPOSED MDP LINE A-19
- PROPOSED MDP LINE A-20
- PROPOSED MDP LINE A-21
- PROPOSED MDP LINE A-22
- PROPOSED MDP LINE A-23
- PROPOSED MDP LINE A-24
- PROPOSED MDP LINE A-25
- PROPOSED MDP LINE A-26
- PROPOSED MDP LINE A-27
- PROPOSED MDP LINE A-28
- PROPOSED MDP LINE A-29
- PROPOSED MDP LINE A-30
- PROPOSED MDP LINE A-31
- PROPOSED MDP LINE A-32
- PROPOSED MDP LINE A-33
- PROPOSED MDP LINE A-34
- PROPOSED MDP LINE A-35
- PROPOSED MDP LINE A-36
- PROPOSED MDP LINE A-37
- PROPOSED MDP LINE A-38
- PROPOSED MDP LINE A-39
- PROPOSED MDP LINE A-40
- PROPOSED MDP LINE A-41
- PROPOSED MDP LINE A-42
- PROPOSED MDP LINE A-43
- PROPOSED MDP LINE A-44
- PROPOSED MDP LINE A-45
- PROPOSED MDP LINE A-46
- PROPOSED MDP LINE A-47
- PROPOSED MDP LINE A-48
- PROPOSED MDP LINE A-49
- PROPOSED MDP LINE A-50
- PROPOSED MDP LINE A-51
- PROPOSED MDP LINE A-52
- PROPOSED MDP LINE A-53
- PROPOSED MDP LINE A-54
- PROPOSED MDP LINE A-55
- PROPOSED MDP LINE A-56
- PROPOSED MDP LINE A-57
- PROPOSED MDP LINE A-58
- PROPOSED MDP LINE A-59
- PROPOSED MDP LINE A-60
- PROPOSED MDP LINE A-61
- PROPOSED MDP LINE A-62
- PROPOSED MDP LINE A-63
- PROPOSED MDP LINE A-64
- PROPOSED MDP LINE A-65
- PROPOSED MDP LINE A-66
- PROPOSED MDP LINE A-67
- PROPOSED MDP LINE A-68
- PROPOSED MDP LINE A-69
- PROPOSED MDP LINE A-70
- PROPOSED MDP LINE A-71
- PROPOSED MDP LINE A-72
- PROPOSED MDP LINE A-73
- PROPOSED MDP LINE A-74
- PROPOSED MDP LINE A-75
- PROPOSED MDP LINE A-76
- PROPOSED MDP LINE A-77
- PROPOSED MDP LINE A-78
- PROPOSED MDP LINE A-79
- PROPOSED MDP LINE A-80
- PROPOSED MDP LINE A-81
- PROPOSED MDP LINE A-82
- PROPOSED MDP LINE A-83
- PROPOSED MDP LINE A-84
- PROPOSED MDP LINE A-85
- PROPOSED MDP LINE A-86
- PROPOSED MDP LINE A-87
- PROPOSED MDP LINE A-88
- PROPOSED MDP LINE A-89
- PROPOSED MDP LINE A-90
- PROPOSED MDP LINE A-91
- PROPOSED MDP LINE A-92
- PROPOSED MDP LINE A-93
- PROPOSED MDP LINE A-94
- PROPOSED MDP LINE A-95
- PROPOSED MDP LINE A-96
- PROPOSED MDP LINE A-97
- PROPOSED MDP LINE A-98
- PROPOSED MDP LINE A-99
- PROPOSED MDP LINE A-100



SCALE 1" = 100'
DATE 06/29/15
W.O. 1425-5
GROSS AREA 240.3 AC±
CONTOUR INTERVAL 5'
TOTAL LOTS 756 RESIDENTIAL

OWNER:
CIMARRON RIDGE, LLC
2900 Adams Street, Suite C-25
Riverside, CA 92504
Tel: (951) 354-2121

PREPARED FOR:
Van Daele Homes
2900 Adams Street, Suite C-25
Riverside, CA 92504
Tel: (951) 354-2121

PREPARED BY:
H&A
HUNSAKLER & ASSOCIATES
A V I L L A
PLANNING & ENGINEERING
RIVERSIDE, CA 92504
Tel: (951) 354-2121

PROPOSED MDP LINE A-14
CONNECTION TO MDP LINE A-15
FROM INTERSECTION OF MCLAUGHLIN RD.
AND GEARY ST. TO ETHANAC RD.

PORTION OF GOETZ ROAD
FROM NORTHERLY PROJECT
BOUNDARY 755' NORTH
TO EXISTING GOETZ ROAD

PORTION OF McLAUGHLIN ROAD
FROM EASTERLY PROJECT
BOUNDARY TO CALLE EMILIANO

City of Menifee
City Council
Date 06/29/15
APPROVE
Sheet 3 of 9

TENTATIVE TRACT
NO. 36658
CITY OF MENIFEES
AMENDMENT #1
SHEET 3 OF 6



TENTATIVE TRACT 36658 AMENDMENT#1

TRACT NO. 36658-4
NUMBER OF PROPOSED LOTS - 81 RESIDENTIAL LOTS

SETBACKS

MINIMUM	FRONT YARD
MINIMUM	FRONT GARAGE
MINIMUM	CORNER SIDE YARD
MINIMUM	INTERIOR SIDE YARD
MINIMUM	REAR YARD
MAXIMUM	HEIGHT
MINIMUM	LOT SIZE
MINIMUM	PAD SIZE

AMENDMENT DESCRIPTION:

INCREASE THE NUMBER OF LOTS FOR TR36656-4 &
TR36657-4. 40 LOTS TO BE RELEGATED FROM TR36656-4
TO TR36658-5

TR36658-5 AMENDMENT NOTES:

AMENDED ALLEGED LOTS PER PERMANENT PLACT 2888A CSD

INCREASE TOTAL NUMBER OF LOTS: #1

ADDED LABELING OF OPEN SPACES: 82, 83, 84, 85, 86, 87, 89,
90, 91-95

OPEN SPACE: 84 9.53 ACRES, INTENDED FOR PARK
IMPROVEMENTS

OPEN SPACE: 82, 0.64 ACRES, INTENDED FOR PARK
IMPROVEMENTS

TM 36658

TF 36658-5
49 LOTS RELOCATED

TR3665B-5
119 O.S. AMEND BY 172 O.S.
AREA REDUCED FROM 9.94 ACRES TO
1.5 ACRES

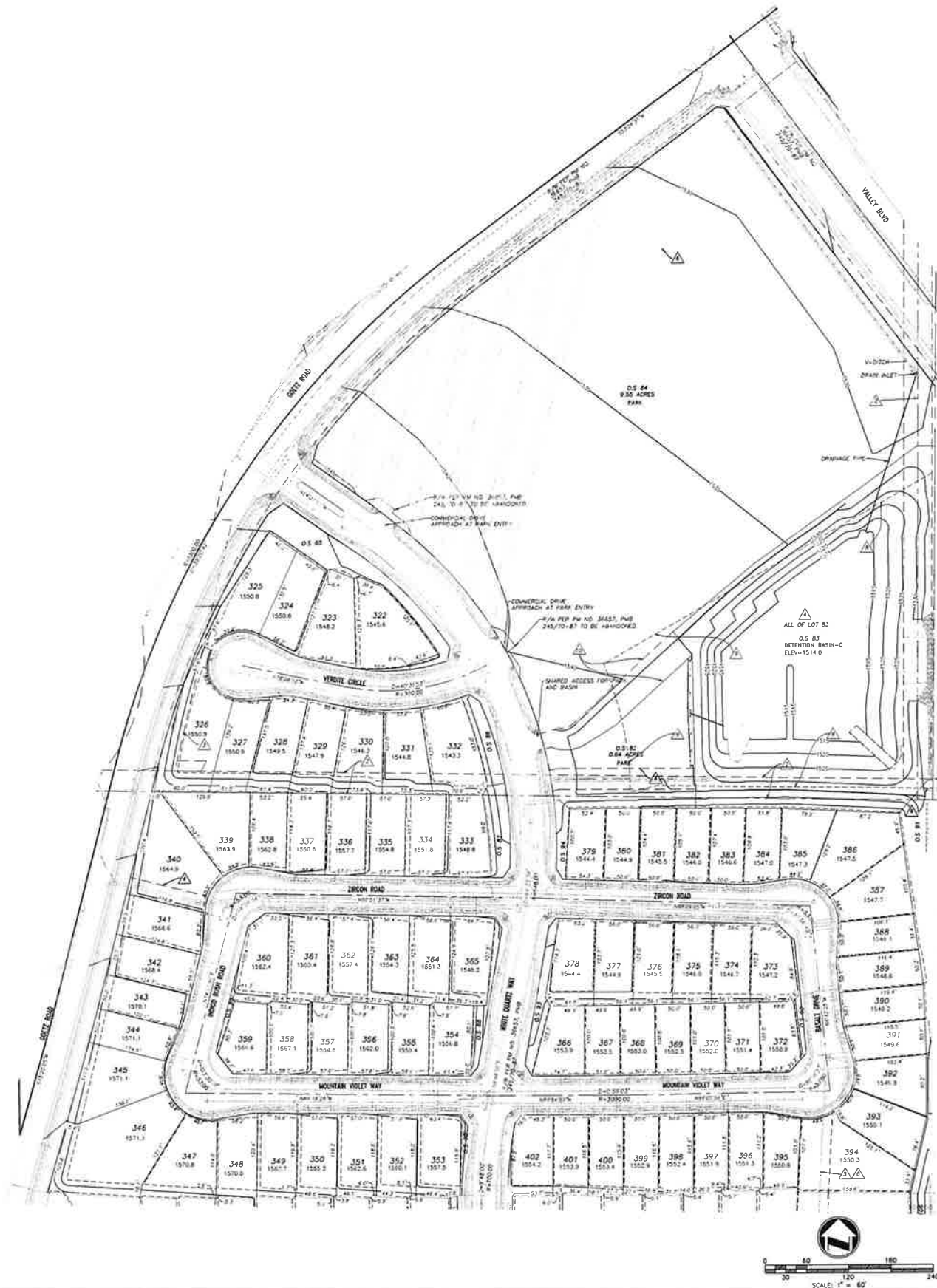
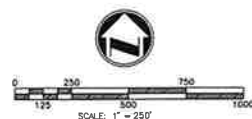
—TR30658-4
49 LOTS TRANSFERRED AMEND
BY NEW 84 0.5 9.55 ACRES,
AND 82 0.5 0.64 ACRES.

TR 36658-4
PARK
10.19AC (NET AC)
10.9AC (GROSS AC)

TR 36658-3

TR 36658-2

TR 36658-1



Polaris 2000 series	
860	2000 (2007) 1.50
865	2000 (2007) 1.50
866	2000 (2007) 1.50
867	2000 (2007) 1.50
868	2000 (2007) 1.50
869	2000 (2007) 1.50
870	2000 (2007) 1.50
871	2000 (2007) 1.50
872	2000 (2007) 1.50
873	2000 (2007) 1.50
874	2000 (2007) 1.50
875	2000 (2007) 1.50
876	2000 (2007) 1.50
877	2000 (2007) 1.50
878	2000 (2007) 1.50
879	2000 (2007) 1.50
880	2000 (2007) 1.50
881	2000 (2007) 1.50
882	2000 (2007) 1.50
883	2000 (2007) 1.50
884	2000 (2007) 1.50
885	2000 (2007) 1.50
886	2000 (2007) 1.50
887	2000 (2007) 1.50
888	2000 (2007) 1.50
889	2000 (2007) 1.50
890	2000 (2007) 1.50
891	2000 (2007) 1.50
892	2000 (2007) 1.50
893	2000 (2007) 1.50
894	2000 (2007) 1.50
895	2000 (2007) 1.50
896	2000 (2007) 1.50
897	2000 (2007) 1.50
898	2000 (2007) 1.50
899	2000 (2007) 1.50
900	2000 (2007) 1.50
901	2000 (2007) 1.50
902	2000 (2007) 1.50
903	2000 (2007) 1.50
904	2000 (2007) 1.50
905	2000 (2007) 1.50
906	2000 (2007) 1.50
907	2000 (2007) 1.50
908	2000 (2007) 1.50
909	2000 (2007) 1.50
910	2000 (2007) 1.50
911	2000 (2007) 1.50
912	2000 (2007) 1.50
913	2000 (2007) 1.50
914	2000 (2007) 1.50
915	2000 (2007) 1.50
916	2000 (2007) 1.50
917	2000 (2007) 1.50
918	2000 (2007) 1.50
919	2000 (2007) 1.50
920	2000 (2007) 1.50
921	2000 (2007) 1.50
922	2000 (2007) 1.50
923	2000 (2007) 1.50
924	2000 (2007) 1.50
925	2000 (2007) 1.50
926	2000 (2007) 1.50
927	2000 (2007) 1.50
928	2000 (2007) 1.50
929	2000 (2007) 1.50
930	2000 (2007) 1.50
931	2000 (2007) 1.50
932	2000 (2007) 1.50
933	2000 (2007) 1.50
934	2000 (2007) 1.50
935	2000 (2007) 1.50
936	2000 (2007) 1.50
937	2000 (2007) 1.50
938	2000 (2007) 1.50
939	2000 (2007) 1.50
940	2000 (2007) 1.50
941	2000 (2007) 1.50
942	2000 (2007) 1.50
943	2000 (2007) 1.50
944	2000 (2007) 1.50
945	2000 (2007) 1.50
946	2000 (2007) 1.50
947	2000 (2007) 1.50
948	2000 (2007) 1.50
949	2000 (2007) 1.50
950	2000 (2007) 1.50
951	2000 (2007) 1.50
952	2000 (2007) 1.50
953	2000 (2007) 1.50
954	2000 (2007) 1.50
955	2000 (2007) 1.50
956	2000 (2007) 1.50
957	2000 (2007) 1.50
958	2000 (2007) 1.50
959	2000 (2007) 1.50
960	2000 (2007) 1.50
961	2000 (2007) 1.50
962	2000 (2007) 1.50
963	2000 (2007) 1.50
964	2000 (2007) 1.50
965	2000 (2007) 1.50
966	2000 (2007) 1.50
967	2000 (2007) 1.50
968	2000 (2007) 1.50
969	2000 (2007) 1.50
970	2000 (2007) 1.50
971	2000 (2007) 1.50
972	2000 (2007) 1.50
973	2000 (2

[illegible]

PLANE PRINTED FOR

Pulte Homes

PLANE PRINTED AT

adkan ENGINEERS

Civil Engineering • Surveying • Planning
6870 Airport Drive, Riverside, CA 92506
Tel: (951) 608-0241 • Fax: (951) 608-0559

SHEET 5 OF 6

AMENDMENT DESCRIPTION:

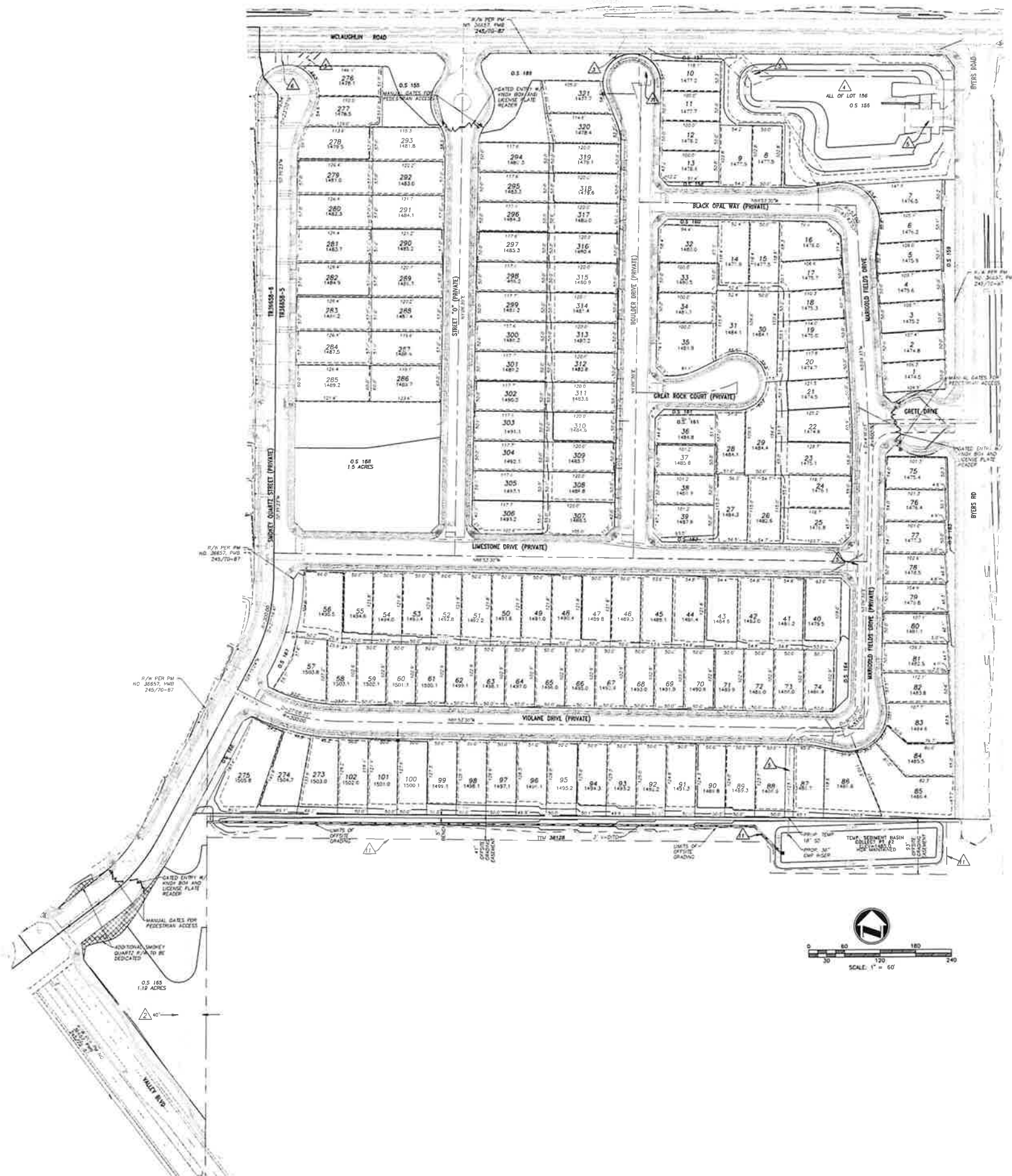
AMEND THE NUMBER OF LOTS FOR TR36658-4 & TR36658-5, 45 LOTS TO BE REDUCED FROM TR36658-4 TO TR36658-5.

TR36658-5 AMENDMENT NOTES:

APPROVED NUMBER LOTS PER TR36658-5: 122
 PROPOSED NUMBER OF LOTS AFTER AMEND: 151
 AMEND OPEN SPACES: 155, 156, 157, 158, 159, 160, 161, 162, 163, 164, 165, 166, 167, 168, 169, 170, 171, 172.
 OPEN SPACE NO. 172: 1.5 ACRES, INTENDED FOR RECREATIONAL FACILITY.

TRACT NO. 36658-5

NUMBER OF PROPOSED LOTS: 151 RESIDENTIAL LOTS



TR36658-5 EASEMENT NOTES

- THE UNITED STATES OF AMERICA, HOLDER OF ALL EASEMENTS FOR DITCHES AND DRAINS RESERVED IN DOCUMENT RECORDED NOVEMBER 29, 1913 IN BOOK 2, PAGE 82 OF PATENTS, BUTLER COUNTY RECORDS.
- SOUTHERN BERNARD POWER COMPANY, HOLDER OF A SEWER EASEMENT FOR PUBLIC UTILITY PURPOSES PER DOCUMENT RECORDED MAY 11, 1928 IN BOOK TEN, PAGE 185 OF DETROIT, BUTLER COUNTY RECORDS TO BE EXCLUDED.
- EASEMENT FOR DRAINAGE AND MAINTENANCE PER PARCEL MAP NO. 36657, PMS 245/70-87.
- BUTLER COUNTY FLOOD CONTROL AND WATER CONSERVATION DISTRICT, HOLDER OF A STORM DRAIN EASEMENT PER DOC. NO. 2019-100.
- BUTLER COUNTY COMMUNITY FACILITIES DISTRICT, HOLDER OF A STORM DRAIN EASEMENT PER DOC. NO. 2019-100.
- EASTERN MUNICIPAL WATER DISTRICT, HOLDER OF A SEWER EASEMENT PER DOCUMENT RECORDED SEPTEMBER 28, 2023 AS DOCUMENT NO. 2020-040180 OF OFFICIAL RECORDS OF BUTLER COUNTY.
- THE JENNING, HOLDER OF EASEMENT FOR PIPELINES, DITCHES, FILLING AND WATER CONDUITS PER DOCUMENT RECORDED JANUARY 22, 1930 IN BOOK EIGHT, PAGE 315 OF DEEDS.
- HOWLA INCORPORATED, HOLDER OF AN EASEMENT FOR PIPELINES AND DITCHES RESERVED PER DOCUMENT RECORDED FEBRUARY 11, 1930 IN BOOK EIGHT, PAGE 180 OF DEEDS.
- HOWLA INCORPORATED, HOLDER OF AN EASEMENT FOR PIPELINES AND DITCHES RESERVED PER DOCUMENT RECORDED FEBRUARY 24, 1930 IN BOOK EIGHT, PAGE 137 OF DEEDS.
- EASEMENT FOR OFFSITE GRADING.

TRACT NO. 36658-5	LOT	AREA	LOT	AREA
1	1	1477.2	101	1477.2
2	2	1477.2	102	1477.2
3	3	1477.2	103	1477.2
4	4	1477.2	104	1477.2
5	5	1477.2	105	1477.2
6	6	1477.2	106	1477.2
7	7	1477.2	107	1477.2
8	8	1477.2	108	1477.2
9	9	1477.2	109	1477.2
10	10	1477.2	110	1477.2
11	11	1477.2	111	1477.2
12	12	1477.2	112	1477.2
13	13	1477.2	113	1477.2
14	14	1477.2	114	1477.2
15	15	1477.2	115	1477.2
16	16	1477.2	116	1477.2
17	17	1477.2	117	1477.2
18	18	1477.2	118	1477.2
19	19	1477.2	119	1477.2
20	20	1477.2	120	1477.2
21	21	1477.2	121	1477.2
22	22	1477.2	122	1477.2
23	23	1477.2	123	1477.2
24	24	1477.2	124	1477.2
25	25	1477.2	125	1477.2
26	26	1477.2	126	1477.2
27	27	1477.2	127	1477.2
28	28	1477.2	128	1477.2
29	29	1477.2	129	1477.2
30	30	1477.2	130	1477.2
31	31	1477.2	131	1477.2
32	32	1477.2	132	1477.2
33	33	1477.2	133	1477.2
34	34	1477.2	134	1477.2
35	35	1477.2	135	1477.2
36	36	1477.2	136	1477.2
37	37	1477.2	137	1477.2
38	38	1477.2	138	1477.2
39	39	1477.2	139	1477.2
40	40	1477.2	140	1477.2
41	41	1477.2	141	1477.2
42	42	1477.2	142	1477.2
43	43	1477.2	143	1477.2
44	44	1477.2	144	1477.2
45	45	1477.2	145	1477.2
46	46	1477.2	146	1477.2
47	47	1477.2	147	1477.2
48	48	1477.2	148	1477.2
49	49	1477.2	149	1477.2
50	50	1477.2	150	1477.2
51	51	1477.2	151	1477.2