

CIP 23-05 CASA BLANCA& CIP 23-06 WILLOW/LAKE RIDGE RESURFACING

MAP LEGEND:

- 6' HEADER GRIND (0"-2")
- LONGITUDINAL TAPER GRIND (0"-2")
- REMOVAL & REPLACE ADA RAMP
- RAISE MH PER EMWD
STD.#SB-53,&SB-61
- ADJUST WV TO GRADE
PER EMWD STD.#B-668
- BLUE DOT MARKER
- 1.5" AC (RUBBERIZED AC) OVER
3/8" ARAM



4000 2000 0 4000 8000

SCALE: 1"=4000'

PROJECT LOCATION #2
WILLOWS/LAKE RIDGE (CIP 23-06)

LOCATION MAP

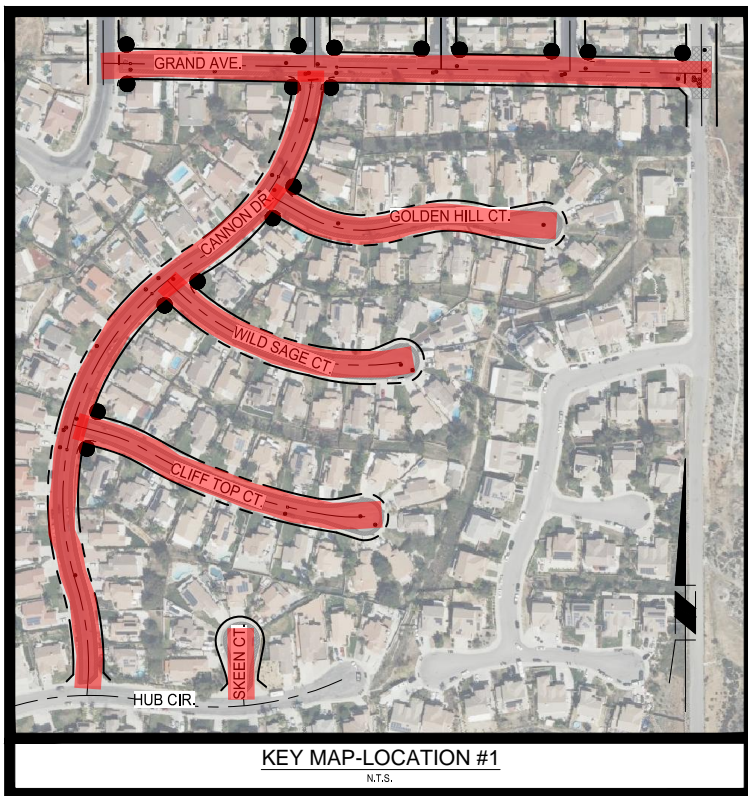
PROJECT LOCATION #1
CASA BLANCA (CIP 23-05)

WINCHESTER
(UNINCORPORATED)



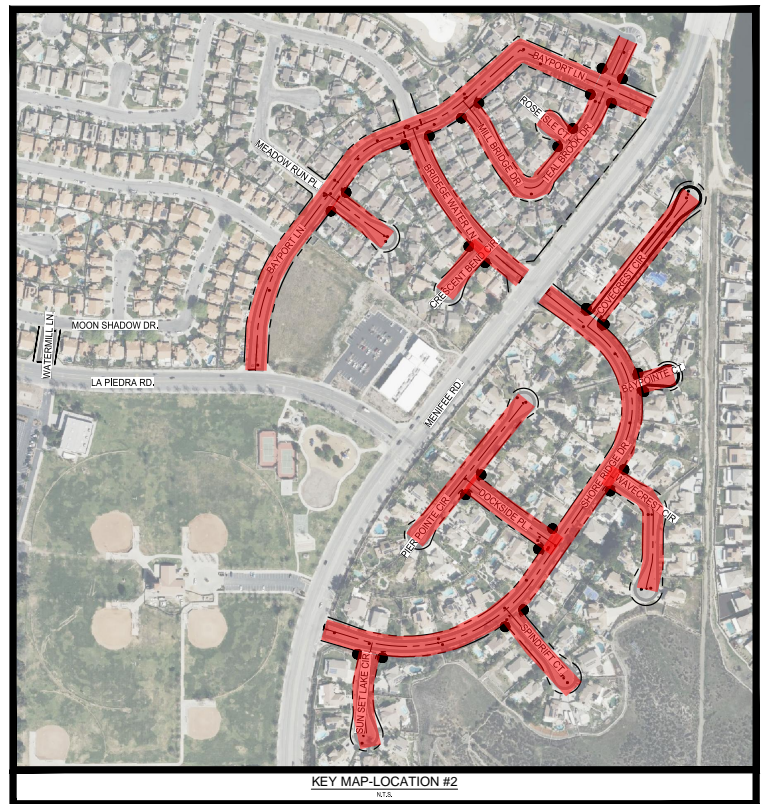
KEY MAP-LOCATION #1

N.T.S.



KEY MAP-LOCATION #1

N.T.S.



KEY MAP-LOCATION #2

N.T.S.