

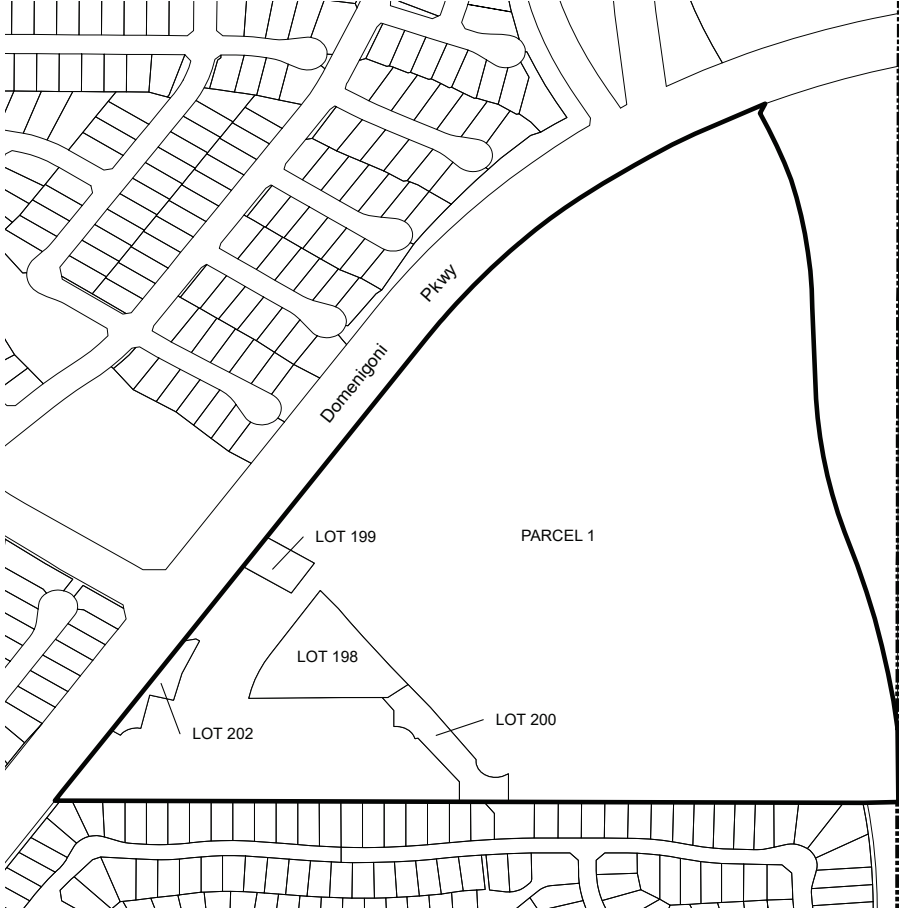
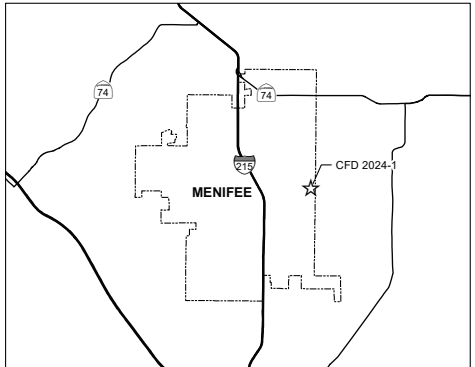
**PROPOSED BOUNDARY MAP**  
**COMMUNITY FACILITIES DISTRICT NO. 2024-1**  
**(BANNER PARK II)**  
**OF THE CITY OF MENIFEE,**  
**COUNTY OF RIVERSIDE, STATE OF CALIFORNIA**

I HEREBY CERTIFY THAT THE WITHIN MAP SHOWING PROPOSED BOUNDARIES OF COMMUNITY FACILITIES DISTRICT NO. 2024-1 (BANNER PARK II), OF THE CITY OF MENIFEE, COUNTY OF RIVERSIDE, STATE OF CALIFORNIA, WAS APPROVED BY THE CITY COUNCIL OF THE CITY OF MENIFEE AT A REGULAR MEETING THEREOF, HELD ON \_\_\_\_ DAY OF \_\_\_\_, 20\_\_\_\_, BY RESOLUTION NO. \_\_\_\_\_

\_\_\_\_\_  
CITY CLERK  
CITY OF MENIFEE

FILED IN THE OFFICE OF THE CITY CLERK, CITY OF MENIFEE,  
THIS \_\_\_\_ DAY OF \_\_\_\_, 20\_\_\_\_.

\_\_\_\_\_  
CITY CLERK  
CITY OF MENIFEE



RECORDED THIS \_\_\_\_ DAY OF \_\_\_\_, 20\_\_\_\_ AT  
THE HOUR OF \_\_\_\_ O'CLOCK \_\_\_\_ M IN BOOK \_\_\_\_  
PAGE \_\_\_\_ OF MAPS OF ASSESSMENT AND COMMUNITY  
FACILITIES DISTRICTS IN THE OFFICE OF THE COUNTY  
RECORDER, IN THE COUNTY OF RIVERSIDE, STATE OF  
CALIFORNIA.

FEE: \_\_\_\_\_ NO.: \_\_\_\_\_  
PETER ALDANA, ASSESSOR, COUNTY CLERK, RECORDER

BY: \_\_\_\_\_  
DEPUTY

THE CURRENT ASSESSOR PARCELS ARE SHOWN WITHIN THE BOUNDARY OF COMMUNITY FACILITIES DISTRICT NO. 2024-1 (BANNER PARK II) AND REFERENCE IS HEREBY MADE TO LOTS 198, 199, 200, AND 202, OF THE CITY OF MENIFEE TRACT MAP 32101. RECORDED IN THE OFFICIAL RECORDS OF THE COUNTY OF RIVERSIDE, STATE OF CALIFORNIA, ON THE 18TH DAY OF AUGUST, 2015, IN BOOK 446 OF MAPS, AT PAGES 42 - 49, AS DOCUMENT NO. 2015-0367463 FOR A DESCRIPTION OF THE LINES AND DIMENSIONS OF THE PARCELS.

THE CURRENT ASSESSOR PARCELS ARE SHOWN WITHIN THE BOUNDARY OF COMMUNITY FACILITIES DISTRICT NO. 2024-1 (BANNER PARK II) AND REFERENCE IS HEREBY MADE TO PARCEL 1, OF THE CITY OF MENIFEE PARCEL MAP 38627. FOR REVERSION OF ACREAGE PURPOSES, RECORDED IN THE OFFICIAL RECORDS OF THE COUNTY OF RIVERSIDE, STATE OF CALIFORNIA, ON THE 1ST DAY OF MARCH, 2024, IN BOOK 257 OF PARCEL MAPS, AT PAGES 98 - 102, AS DOCUMENT NO. 2024-0058006 FOR A DESCRIPTION OF THE LINES AND DIMENSIONS OF THE PARCELS.

**LEGEND**

- \_\_\_\_ PARCEL LINE
- \_\_\_\_ CFD BOUNDARY
- \_\_\_\_ CITY BOUNDARY

THIS BOUNDARY MAP CORRECTLY SHOWS THE LOT OR PARCEL OF LAND INCLUDED WITHIN THE BOUNDARIES OF THE COMMUNITY FACILITIES DISTRICT. FOR DETAILS CONCERNING THE LINES AND DIMENSIONS OF LOTS OR PARCEL REFER TO THE COUNTY ASSESSOR MAPS FOR FISCAL YEAR 2023-24.

