

[illegible]

- ## APPENDIX B: KEYNOTES

- |    |                                     |    |                                 |
|----|-------------------------------------|----|---------------------------------|
| 1  | HEAVY BRIDGE FISHING CONC. PAVEMENT | 11 | NOT USED                        |
| 2  | OUTSIDE MURDERED PAID               | 12 | NOT USED                        |
| 3  | CONCRETE WALL                       | 13 | NOT USED                        |
| 4  | CONCRETE PAVEMENT                   | 14 | THIN CONCRETE FOR CITY STANDARD |
| 5  | CONCRETE PAVEMENT                   | 15 | THIN CONCRETE                   |
| 6  | CONCRETE PAVEMENT                   | 16 | THIN CONCRETE                   |
| 7  | CONCRETE PAVEMENT                   | 17 | THIN CONCRETE                   |
| 8  | CONCRETE PAVEMENT                   | 18 | THIN CONCRETE                   |
| 9  | CONCRETE PAVEMENT                   | 19 | THIN CONCRETE                   |
| 10 | CONCRETE PAVEMENT                   | 20 | THIN CONCRETE                   |
| 21 | CONCRETE PAVEMENT                   | 21 | THIN CONCRETE                   |
| 22 | CONCRETE PAVEMENT                   | 22 | THIN CONCRETE                   |
| 23 | CONCRETE PAVEMENT                   | 23 | THIN CONCRETE                   |
| 24 | CONCRETE PAVEMENT                   | 24 | THIN CONCRETE                   |
| 25 | CONCRETE PAVEMENT                   | 25 | THIN CONCRETE                   |
| 26 | CONCRETE PAVEMENT                   | 26 | THIN CONCRETE                   |
| 27 | CONCRETE PAVEMENT                   | 27 | THIN CONCRETE                   |
| 28 | CONCRETE PAVEMENT                   | 28 | THIN CONCRETE                   |
| 29 | CONCRETE PAVEMENT                   | 29 | THIN CONCRETE                   |
| 30 | CONCRETE PAVEMENT                   | 30 | THIN CONCRETE                   |
| 31 | CONCRETE PAVEMENT                   | 31 | THIN CONCRETE                   |
| 32 | CONCRETE PAVEMENT                   | 32 | THIN CONCRETE                   |
| 33 | CONCRETE PAVEMENT                   | 33 | THIN CONCRETE                   |
| 34 | CONCRETE PAVEMENT                   | 34 | THIN CONCRETE                   |
| 35 | CONCRETE PAVEMENT                   | 35 | THIN CONCRETE                   |
| 36 | CONCRETE PAVEMENT                   | 36 | THIN CONCRETE                   |
| 37 | CONCRETE PAVEMENT                   | 37 | THIN CONCRETE                   |
| 38 | CONCRETE PAVEMENT                   | 38 | THIN CONCRETE                   |
| 39 | CONCRETE PAVEMENT                   | 39 | THIN CONCRETE                   |
| 40 | CONCRETE PAVEMENT                   | 40 | THIN CONCRETE                   |
| 41 | CONCRETE PAVEMENT                   | 41 | THIN CONCRETE                   |
| 42 | CONCRETE PAVEMENT                   | 42 | THIN CONCRETE                   |
| 43 | CONCRETE PAVEMENT                   | 43 | THIN CONCRETE                   |
| 44 | CONCRETE PAVEMENT                   | 44 | THIN CONCRETE                   |
| 45 | CONCRETE PAVEMENT                   | 45 | THIN CONCRETE                   |
| 46 | CONCRETE PAVEMENT                   | 46 | THIN CONCRETE                   |
| 47 | CONCRETE PAVEMENT                   | 47 | THIN CONCRETE                   |
| 48 | CONCRETE PAVEMENT                   | 48 | THIN CONCRETE                   |
| 49 | CONCRETE PAVEMENT                   | 49 | THIN CONCRETE                   |
| 50 | CONCRETE PAVEMENT                   | 50 | THIN CONCRETE                   |
| 51 | CONCRETE PAVEMENT                   | 51 | THIN CONCRETE                   |
| 52 | CONCRETE PAVEMENT                   | 52 | THIN CONCRETE                   |
| 53 | CONCRETE PAVEMENT                   | 53 | THIN CONCRETE                   |
| 54 | CONCRETE PAVEMENT                   | 54 | THIN CONCRETE                   |
| 55 | CONCRETE PAVEMENT                   | 55 | THIN CONCRETE                   |
| 56 | CONCRETE PAVEMENT                   | 56 | THIN CONCRETE                   |
| 57 | CONCRETE PAVEMENT                   | 57 | THIN CONCRETE                   |
| 58 | CONCRETE PAVEMENT                   | 58 | THIN CONCRETE                   |
| 59 | CONCRETE PAVEMENT                   | 59 | THIN CONCRETE                   |
| 60 | CONCRETE PAVEMENT                   | 60 | THIN CONCRETE                   |
| 61 | CONCRETE PAVEMENT                   | 61 | THIN CONCRETE                   |
| 62 | CONCRETE PAVEMENT                   | 62 | THIN CONCRETE                   |
| 63 | CONCRETE PAVEMENT                   | 63 | THIN CONCRETE                   |
| 64 | CONCRETE PAVEMENT                   | 64 | THIN CONCRETE                   |
| 65 | CONCRETE PAVEMENT                   | 65 | THIN CONCRETE                   |
| 66 | CONCRETE PAVEMENT                   | 66 | THIN CONCRETE                   |
| 67 | CONCRETE PAVEMENT                   | 67 | THIN CONCRETE                   |
| 68 | CONCRETE PAVEMENT                   | 68 | THIN CONCRETE                   |
| 69 | CONCRETE PAVEMENT                   | 69 | THIN CONCRETE                   |
| 70 | CONCRETE PAVEMENT                   | 70 | THIN CONCRETE                   |
| 71 | CONCRETE PAVEMENT                   | 71 | THIN CONCRETE                   |
| 72 | CONCRETE PAVEMENT                   | 72 | THIN CONCRETE                   |
| 73 | CONCRETE PAVEMENT                   | 73 | THIN CONCRETE                   |
| 74 | CONCRETE PAVEMENT                   | 74 | THIN CONCRETE                   |
| 75 | CONCRETE PAVEMENT                   | 75 | THIN CONCRETE                   |
| 76 | CONCRETE PAVEMENT                   | 76 | THIN CONCRETE                   |
| 77 | CONCRETE PAVEMENT                   | 77 | THIN CONCRETE                   |
| 78 | CONCRETE PAVEMENT                   | 78 | THIN CONCRETE                   |
| 79 | CONCRETE PAVEMENT                   | 79 | THIN CONCRETE                   |
| 80 | CONCRETE PAVEMENT                   | 80 | THIN CONCRETE                   |
| 81 | CONCRETE PAVEMENT                   | 81 | THIN CONCRETE                   |
| 82 | CONCRETE PAVEMENT                   | 82 | THIN CONCRETE                   |
| 83 | CONCRETE PAVEMENT                   | 83 | THIN CONCRETE                   |
| 84 | CONCRETE PAVEMENT                   | 84 | THIN CONCRETE                   |
| 85 | CONCRETE PAVEMENT                   | 85 | THIN CONCRETE                   |
| 86 | CONCRETE PAVEMENT                   | 86 | THIN CONCRETE                   |
| 87 | CONCRETE PAVEMENT                   | 87 | THIN CONCRETE                   |
| 88 | CONCRETE PAVEMENT                   | 88 | THIN CONCRETE                   |
| 89 | CONCRETE PAVEMENT                   | 89 | THIN CONCRETE                   |
| 90 | CONCRETE PAVEMENT                   | 90 | THIN CONCRETE                   |
| 91 | CONCRETE PAVEMENT                   | 91 | THIN CONCRETE                   |
| 92 | CONCRETE PAVEMENT                   | 92 | THIN CONCRETE                   |
| 93 | CONCRETE PAVEMENT                   | 93 | THIN CONCRETE                   |
| 94 | CONCRETE PAVEMENT                   | 94 | THIN CONCRETE                   |
| 95 | CONCRETE PAVEMENT                   | 95 | THIN CONCRETE                   |
| 96 | CONCRETE PAVEMENT                   | 96 | THIN CONCRETE                   |
| 97 | CONCRETE PAVEMENT                   | 97 | THIN CONCRETE                   |
| 98 | CONCRETE PAVEMENT                   | 98 | THIN CONCRETE                   |
| 99 | CONCRETE PAVEMENT                   | 99 | THIN CONCRETE                   |
|    |                                     |    |                                 |

11. ARE THERE ANY SPECIAL PLANNING OR ZONING CONSIDERATIONS FOR THIS FINAL LOCATION?
12. PAID COSTS AND FUTURE PLANS TO IMPROVE THE FACILITY ARE PROVIDED FOR THE FUNDING OF THE FACILITY.
13. AN INDICATION OF THE FUTURE PROJECTED LAND USES AND THE PROJECTED TRAFFIC VOLUMES ARE PROVIDED FOR THE FACILITY.
14. A PUBLIC DEVELOPMENT PROGRAM TO INCREASE THE BENEFIT OF THE FACILITY TO THE COMMUNITY IS PROVIDED.
15. A PUBLIC DEVELOPMENT PROGRAM TO INCREASE THE BENEFIT OF THE FACILITY TO THE COMMUNITY IS PROVIDED.
16. A PUBLIC DEVELOPMENT PROGRAM TO INCREASE THE BENEFIT OF THE FACILITY TO THE COMMUNITY IS PROVIDED.
17. NOT MET
18. A PUBLIC DEVELOPMENT PROGRAM TO INCREASE THE BENEFIT OF THE FACILITY TO THE COMMUNITY IS PROVIDED.
19. APPROVED SUPERVISORIAL LANDSCAPE PLAN FOR THE FACILITY.

- ## SITE 1 LEGEND

- ☐ LIGHT SIGNALS  
 EXISTING PUBLIC  
 FIRE HYDRANT  
 180  
 - SEE 2  
 NOTES  
 PRIVATE FIRE HYDRANT  
 APPROXIMATE LOCATION  
 PROPERTY LINE  
 PATH OF TRAVEL

OFFICIAL USE ONLY



HPA, INC.  
18071 SACRAMENTO AVENUE, SUITE #100  
DUBLIN, CA 94568  
TEL: 949-881-1770  
FAX: 949-881-1772  
WWW.HPAARCHITECTURE.COM  
EMAIL: info@hpaarch.com



Owlett



1545 FARMWAY AVENUE  
CARLSBAD CA 92008  
TEL: 760-627-8825  
WWW.CAPSTONEADVISORS.COM

Project:  
CADO  
Merilee

ALPHEE ROAD AND WHEAT STREET  
MENEFEE, CA



Consultants:

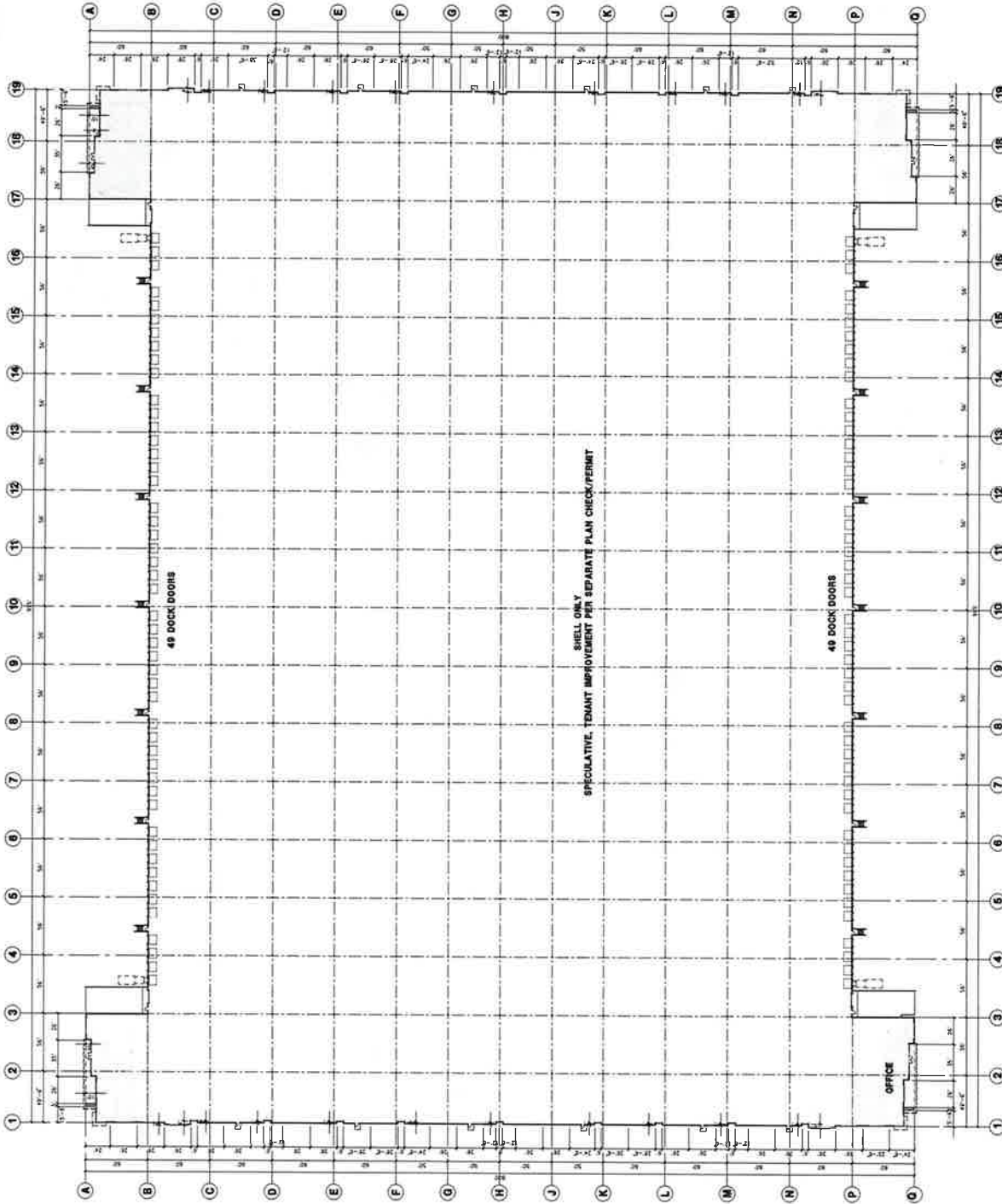
CIVIL  
MECHANICAL  
ELECTRICAL  
PLUMBING  
STRUCTURAL  
FOUNDATION  
EXTERIOR

Time: OVERALL FLOOR PLAN

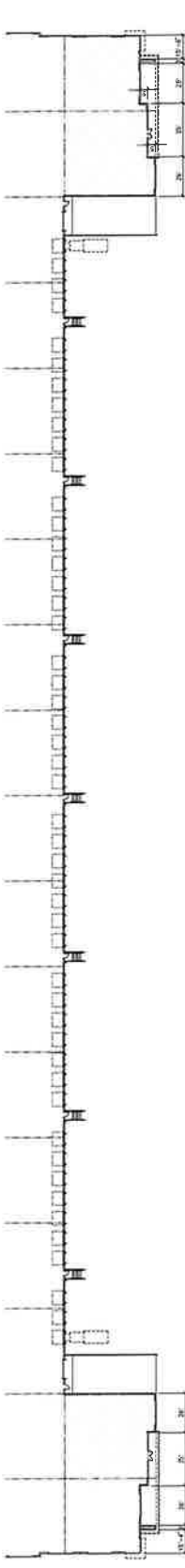
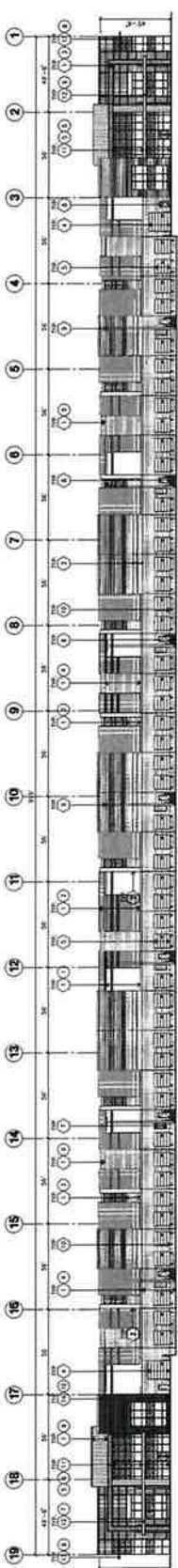
Project Number: 2005  
Drawn by: SH  
Date: 02/02/02  
Revision: 01/15/02

Sheet:

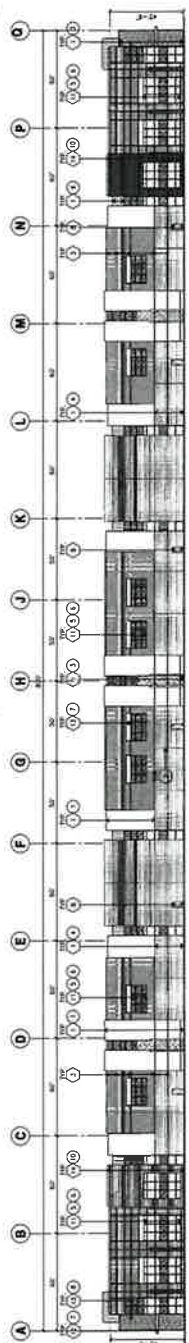
DAB-A2.1



OVERALL FLOOR PLAN



**NORTH ELEVATION A**



**WEST ELEVATION B**



**COLOR SCHEDULE - ELEVATIONS**

1	CONCRETE, TILT-UP PANEL	PAINT: BROWN, SYSTEM: KILN DRY, 100% SOLIDS
2	CONCRETE, TILT-UP PANEL	PAINT: BROWN, SYSTEM: KILN DRY, 100% SOLIDS
3	CONCRETE, TILT-UP PANEL	PAINT: BROWN, SYSTEM: KILN DRY, 100% SOLIDS
4	CONCRETE, TILT-UP PANEL	PAINT: BROWN, SYSTEM: KILN DRY, 100% SOLIDS
5	GLASS	GLASS: CLEAR, SYSTEM: KILN DRY, 100% SOLIDS
6	GLASS	GLASS: CLEAR, SYSTEM: KILN DRY, 100% SOLIDS
7	GLASS	GLASS: CLEAR, SYSTEM: KILN DRY, 100% SOLIDS
8	GLASS	GLASS: CLEAR, SYSTEM: KILN DRY, 100% SOLIDS
9	GLASS	GLASS: CLEAR, SYSTEM: KILN DRY, 100% SOLIDS
10	GLASS	GLASS: CLEAR, SYSTEM: KILN DRY, 100% SOLIDS
11	GLASS	GLASS: CLEAR, SYSTEM: KILN DRY, 100% SOLIDS
12	GLASS	GLASS: CLEAR, SYSTEM: KILN DRY, 100% SOLIDS
13	GLASS	GLASS: CLEAR, SYSTEM: KILN DRY, 100% SOLIDS
14	GLASS	GLASS: CLEAR, SYSTEM: KILN DRY, 100% SOLIDS
15	GLASS	GLASS: CLEAR, SYSTEM: KILN DRY, 100% SOLIDS
16	GLASS	GLASS: CLEAR, SYSTEM: KILN DRY, 100% SOLIDS
17	GLASS	GLASS: CLEAR, SYSTEM: KILN DRY, 100% SOLIDS
18	GLASS	GLASS: CLEAR, SYSTEM: KILN DRY, 100% SOLIDS
19	GLASS	GLASS: CLEAR, SYSTEM: KILN DRY, 100% SOLIDS

**KEYNOTES - ELEVATIONS**

1. CONCRETE, TILT-UP PANEL, SYSTEM: KILN DRY, 100% SOLIDS
2. CONCRETE, TILT-UP PANEL, SYSTEM: KILN DRY, 100% SOLIDS
3. CONCRETE, TILT-UP PANEL, SYSTEM: KILN DRY, 100% SOLIDS
4. CONCRETE, TILT-UP PANEL, SYSTEM: KILN DRY, 100% SOLIDS
5. GLASS, SYSTEM: KILN DRY, 100% SOLIDS
6. GLASS, SYSTEM: KILN DRY, 100% SOLIDS
7. GLASS, SYSTEM: KILN DRY, 100% SOLIDS
8. GLASS, SYSTEM: KILN DRY, 100% SOLIDS
9. GLASS, SYSTEM: KILN DRY, 100% SOLIDS
10. GLASS, SYSTEM: KILN DRY, 100% SOLIDS
11. GLASS, SYSTEM: KILN DRY, 100% SOLIDS
12. GLASS, SYSTEM: KILN DRY, 100% SOLIDS
13. GLASS, SYSTEM: KILN DRY, 100% SOLIDS
14. GLASS, SYSTEM: KILN DRY, 100% SOLIDS
15. GLASS, SYSTEM: KILN DRY, 100% SOLIDS
16. GLASS, SYSTEM: KILN DRY, 100% SOLIDS
17. GLASS, SYSTEM: KILN DRY, 100% SOLIDS
18. GLASS, SYSTEM: KILN DRY, 100% SOLIDS
19. GLASS, SYSTEM: KILN DRY, 100% SOLIDS

**GLAZING LEGEND**

- 1. GLASS, SYSTEM: KILN DRY, 100% SOLIDS
- 2. GLASS, SYSTEM: KILN DRY, 100% SOLIDS
- 3. GLASS, SYSTEM: KILN DRY, 100% SOLIDS
- 4. GLASS, SYSTEM: KILN DRY, 100% SOLIDS
- 5. GLASS, SYSTEM: KILN DRY, 100% SOLIDS
- 6. GLASS, SYSTEM: KILN DRY, 100% SOLIDS
- 7. GLASS, SYSTEM: KILN DRY, 100% SOLIDS
- 8. GLASS, SYSTEM: KILN DRY, 100% SOLIDS
- 9. GLASS, SYSTEM: KILN DRY, 100% SOLIDS
- 10. GLASS, SYSTEM: KILN DRY, 100% SOLIDS
- 11. GLASS, SYSTEM: KILN DRY, 100% SOLIDS
- 12. GLASS, SYSTEM: KILN DRY, 100% SOLIDS
- 13. GLASS, SYSTEM: KILN DRY, 100% SOLIDS
- 14. GLASS, SYSTEM: KILN DRY, 100% SOLIDS
- 15. GLASS, SYSTEM: KILN DRY, 100% SOLIDS
- 16. GLASS, SYSTEM: KILN DRY, 100% SOLIDS
- 17. GLASS, SYSTEM: KILN DRY, 100% SOLIDS
- 18. GLASS, SYSTEM: KILN DRY, 100% SOLIDS
- 19. GLASS, SYSTEM: KILN DRY, 100% SOLIDS

**GENERAL NOTES - ELEVATIONS**

1. CONCRETE, TILT-UP PANEL, SYSTEM: KILN DRY, 100% SOLIDS
2. CONCRETE, TILT-UP PANEL, SYSTEM: KILN DRY, 100% SOLIDS
3. CONCRETE, TILT-UP PANEL, SYSTEM: KILN DRY, 100% SOLIDS
4. CONCRETE, TILT-UP PANEL, SYSTEM: KILN DRY, 100% SOLIDS
5. GLASS, SYSTEM: KILN DRY, 100% SOLIDS
6. GLASS, SYSTEM: KILN DRY, 100% SOLIDS
7. GLASS, SYSTEM: KILN DRY, 100% SOLIDS
8. GLASS, SYSTEM: KILN DRY, 100% SOLIDS
9. GLASS, SYSTEM: KILN DRY, 100% SOLIDS
10. GLASS, SYSTEM: KILN DRY, 100% SOLIDS
11. GLASS, SYSTEM: KILN DRY, 100% SOLIDS
12. GLASS, SYSTEM: KILN DRY, 100% SOLIDS
13. GLASS, SYSTEM: KILN DRY, 100% SOLIDS
14. GLASS, SYSTEM: KILN DRY, 100% SOLIDS
15. GLASS, SYSTEM: KILN DRY, 100% SOLIDS
16. GLASS, SYSTEM: KILN DRY, 100% SOLIDS
17. GLASS, SYSTEM: KILN DRY, 100% SOLIDS
18. GLASS, SYSTEM: KILN DRY, 100% SOLIDS
19. GLASS, SYSTEM: KILN DRY, 100% SOLIDS





HPA, Inc.  
18201 Redwood Road, Suite 100  
Redwood City, CA 94061  
Tel: 650-351-1770  
Fax: 650-351-1771  
email: hpa@hpa.com

OWDC



1545 FARADAY AVENUE  
CARLSBAD CA 92008  
Tel: 760-439-1000  
ATtn: JENNIFER WATSON

Project:  
CADO  
Menifee

40000 ROAD AND WHEAT STREET  
MENIFEE, CA

Consultants:

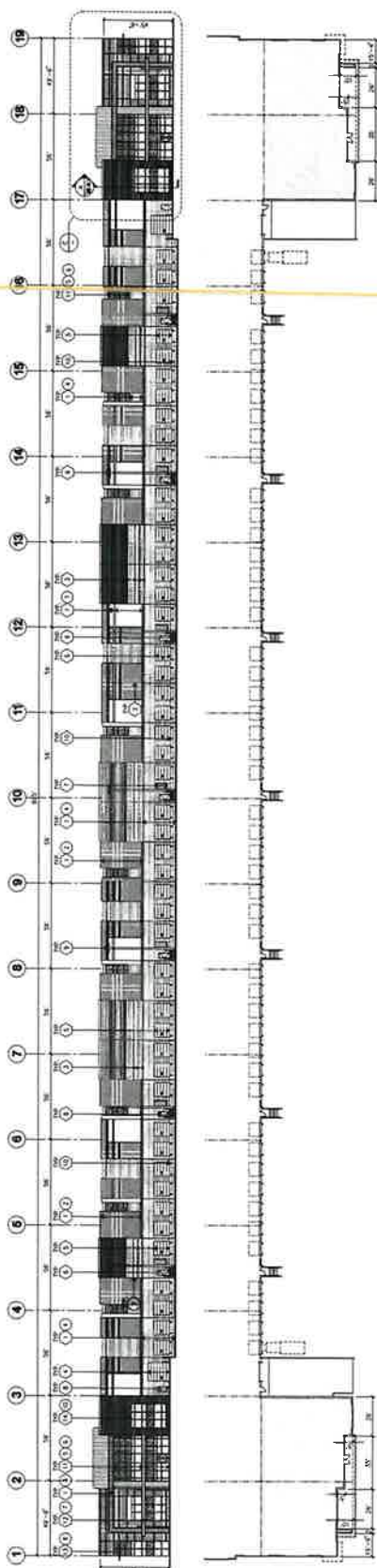
VEIB and Associates  
CIVIL  
STRUCTURAL  
MECHANICAL  
PLUMBING  
ELECTRICAL  
LANDSCAPE  
FIRE PROTECTION  
SOLAR DESIGN

TIME ELEVATION

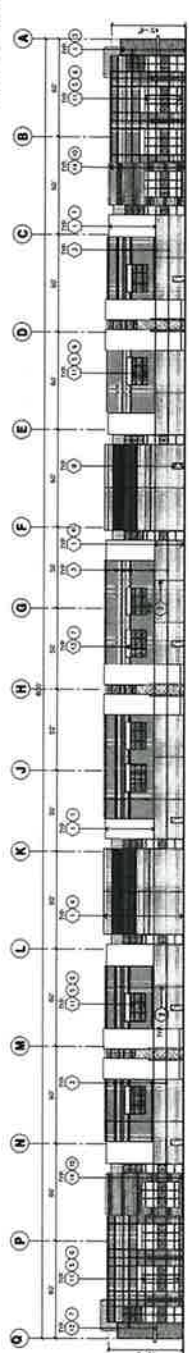
Project Number: 20075  
Drawn by: SH  
Date: 03/12/2022  
Revised:  
REVISION #1 03/12/2022

Sheet:

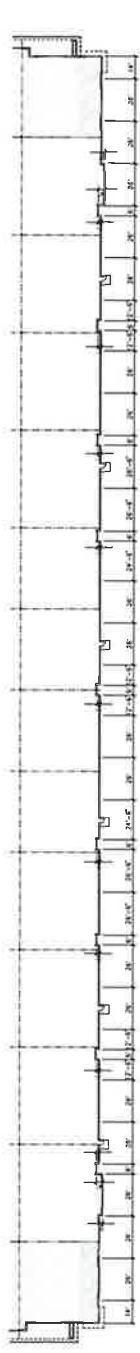
DAB-A3.2



SOUTH ELEVATION A



EAST ELEVATION B



ENLARGED SOUTH ELEVATION C

COLOR SCHEDULE - ELEVATIONS

1	CONCRETE FL-UP PANEL	PRIME GRAY, SYPHON WALLS, 2000S, RITE WIRE
2	CONCRETE FL-UP PANEL	PRIME GRAY, SYPHON WALLS, 2000S, RITE WIRE
3	CONCRETE FL-UP PANEL	PRIME GRAY, SYPHON WALLS, 2000S, RITE WIRE
4	CONCRETE FL-UP PANEL	PRIME GRAY, SYPHON WALLS, 2000S, RITE WIRE
5	CONCRETE FL-UP PANEL	PRIME GRAY, SYPHON WALLS, 2000S, RITE WIRE
6	CONCRETE FL-UP PANEL	PRIME GRAY, SYPHON WALLS, 2000S, RITE WIRE
7	CONCRETE FL-UP PANEL	PRIME GRAY, SYPHON WALLS, 2000S, RITE WIRE
8	CONCRETE FL-UP PANEL	PRIME GRAY, SYPHON WALLS, 2000S, RITE WIRE
9	CONCRETE FL-UP PANEL	PRIME GRAY, SYPHON WALLS, 2000S, RITE WIRE
10	CONCRETE FL-UP PANEL	PRIME GRAY, SYPHON WALLS, 2000S, RITE WIRE
11	CONCRETE FL-UP PANEL	PRIME GRAY, SYPHON WALLS, 2000S, RITE WIRE
12	CONCRETE FL-UP PANEL	PRIME GRAY, SYPHON WALLS, 2000S, RITE WIRE
13	CONCRETE FL-UP PANEL	PRIME GRAY, SYPHON WALLS, 2000S, RITE WIRE
14	CONCRETE FL-UP PANEL	PRIME GRAY, SYPHON WALLS, 2000S, RITE WIRE
15	CONCRETE FL-UP PANEL	PRIME GRAY, SYPHON WALLS, 2000S, RITE WIRE
16	CONCRETE FL-UP PANEL	PRIME GRAY, SYPHON WALLS, 2000S, RITE WIRE
17	CONCRETE FL-UP PANEL	PRIME GRAY, SYPHON WALLS, 2000S, RITE WIRE
18	CONCRETE FL-UP PANEL	PRIME GRAY, SYPHON WALLS, 2000S, RITE WIRE
19	CONCRETE FL-UP PANEL	PRIME GRAY, SYPHON WALLS, 2000S, RITE WIRE

GLAZING LEGEND

1	GLAZING	PRIME GRAY, SYPHON WALLS, 2000S, RITE WIRE
2	GLAZING	PRIME GRAY, SYPHON WALLS, 2000S, RITE WIRE
3	GLAZING	PRIME GRAY, SYPHON WALLS, 2000S, RITE WIRE
4	GLAZING	PRIME GRAY, SYPHON WALLS, 2000S, RITE WIRE
5	GLAZING	PRIME GRAY, SYPHON WALLS, 2000S, RITE WIRE
6	GLAZING	PRIME GRAY, SYPHON WALLS, 2000S, RITE WIRE
7	GLAZING	PRIME GRAY, SYPHON WALLS, 2000S, RITE WIRE
8	GLAZING	PRIME GRAY, SYPHON WALLS, 2000S, RITE WIRE
9	GLAZING	PRIME GRAY, SYPHON WALLS, 2000S, RITE WIRE
10	GLAZING	PRIME GRAY, SYPHON WALLS, 2000S, RITE WIRE
11	GLAZING	PRIME GRAY, SYPHON WALLS, 2000S, RITE WIRE
12	GLAZING	PRIME GRAY, SYPHON WALLS, 2000S, RITE WIRE
13	GLAZING	PRIME GRAY, SYPHON WALLS, 2000S, RITE WIRE
14	GLAZING	PRIME GRAY, SYPHON WALLS, 2000S, RITE WIRE
15	GLAZING	PRIME GRAY, SYPHON WALLS, 2000S, RITE WIRE
16	GLAZING	PRIME GRAY, SYPHON WALLS, 2000S, RITE WIRE
17	GLAZING	PRIME GRAY, SYPHON WALLS, 2000S, RITE WIRE
18	GLAZING	PRIME GRAY, SYPHON WALLS, 2000S, RITE WIRE
19	GLAZING	PRIME GRAY, SYPHON WALLS, 2000S, RITE WIRE

KEYNOTES - ELEVATIONS

1. EXISTING BUILDING TO BE DEMOLISHED AND REPLACED WITH NEW BUILDING.
2. EXISTING BUILDING TO BE DEMOLISHED AND REPLACED WITH NEW BUILDING.
3. EXISTING BUILDING TO BE DEMOLISHED AND REPLACED WITH NEW BUILDING.
4. EXISTING BUILDING TO BE DEMOLISHED AND REPLACED WITH NEW BUILDING.
5. EXISTING BUILDING TO BE DEMOLISHED AND REPLACED WITH NEW BUILDING.
6. EXISTING BUILDING TO BE DEMOLISHED AND REPLACED WITH NEW BUILDING.
7. EXISTING BUILDING TO BE DEMOLISHED AND REPLACED WITH NEW BUILDING.
8. EXISTING BUILDING TO BE DEMOLISHED AND REPLACED WITH NEW BUILDING.
9. EXISTING BUILDING TO BE DEMOLISHED AND REPLACED WITH NEW BUILDING.
10. EXISTING BUILDING TO BE DEMOLISHED AND REPLACED WITH NEW BUILDING.
11. EXISTING BUILDING TO BE DEMOLISHED AND REPLACED WITH NEW BUILDING.
12. EXISTING BUILDING TO BE DEMOLISHED AND REPLACED WITH NEW BUILDING.
13. EXISTING BUILDING TO BE DEMOLISHED AND REPLACED WITH NEW BUILDING.
14. EXISTING BUILDING TO BE DEMOLISHED AND REPLACED WITH NEW BUILDING.
15. EXISTING BUILDING TO BE DEMOLISHED AND REPLACED WITH NEW BUILDING.
16. EXISTING BUILDING TO BE DEMOLISHED AND REPLACED WITH NEW BUILDING.
17. EXISTING BUILDING TO BE DEMOLISHED AND REPLACED WITH NEW BUILDING.
18. EXISTING BUILDING TO BE DEMOLISHED AND REPLACED WITH NEW BUILDING.
19. EXISTING BUILDING TO BE DEMOLISHED AND REPLACED WITH NEW BUILDING.

GENERAL NOTES - ELEVATIONS

1. ALL DIMENSIONS SHOWN TO CENTER UNLESS OTHERWISE NOTED.
2. ALL DIMENSIONS SHOWN TO CENTER UNLESS OTHERWISE NOTED.
3. ALL DIMENSIONS SHOWN TO CENTER UNLESS OTHERWISE NOTED.
4. ALL DIMENSIONS SHOWN TO CENTER UNLESS OTHERWISE NOTED.
5. ALL DIMENSIONS SHOWN TO CENTER UNLESS OTHERWISE NOTED.
6. ALL DIMENSIONS SHOWN TO CENTER UNLESS OTHERWISE NOTED.
7. ALL DIMENSIONS SHOWN TO CENTER UNLESS OTHERWISE NOTED.
8. ALL DIMENSIONS SHOWN TO CENTER UNLESS OTHERWISE NOTED.
9. ALL DIMENSIONS SHOWN TO CENTER UNLESS OTHERWISE NOTED.
10. ALL DIMENSIONS SHOWN TO CENTER UNLESS OTHERWISE NOTED.
11. ALL DIMENSIONS SHOWN TO CENTER UNLESS OTHERWISE NOTED.
12. ALL DIMENSIONS SHOWN TO CENTER UNLESS OTHERWISE NOTED.
13. ALL DIMENSIONS SHOWN TO CENTER UNLESS OTHERWISE NOTED.
14. ALL DIMENSIONS SHOWN TO CENTER UNLESS OTHERWISE NOTED.
15. ALL DIMENSIONS SHOWN TO CENTER UNLESS OTHERWISE NOTED.
16. ALL DIMENSIONS SHOWN TO CENTER UNLESS OTHERWISE NOTED.
17. ALL DIMENSIONS SHOWN TO CENTER UNLESS OTHERWISE NOTED.
18. ALL DIMENSIONS SHOWN TO CENTER UNLESS OTHERWISE NOTED.
19. ALL DIMENSIONS SHOWN TO CENTER UNLESS OTHERWISE NOTED.



HPA  
Architecture



Capstone  
Advisors

1545 E. 15th Avenue  
Denver, CO 80202  
Tel: 720.477.8825  
Fax: 720.477.8826  
www.hpaarch.com

Owner:  
Capstone Advisors

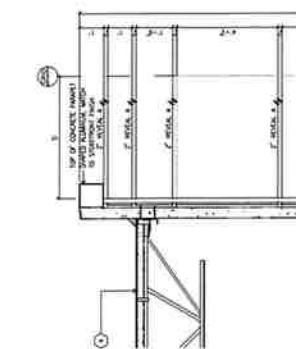
Project:  
CADO  
Menifee

Consultants:  
Civil  
Mechanical  
Electrical  
Plumbing  
Landscaping  
Structural  
Interior Design

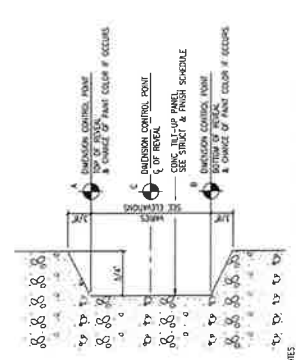
Project Number:  
20075  
Drawn by:  
DSD/0222

Revised:  
02/13/2022  
Revision #1

Sheet:  
DAB-A4.1



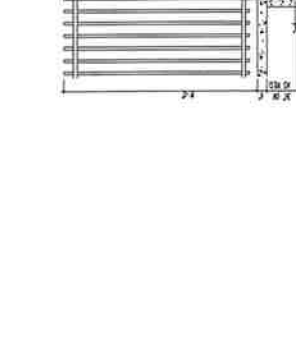
WALL SECTION & WINDOWS



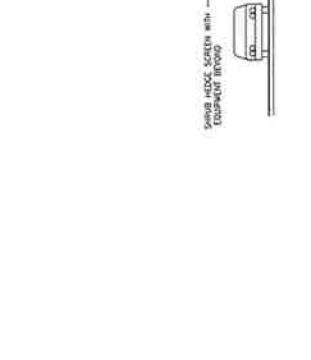
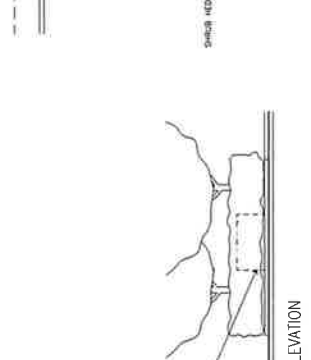
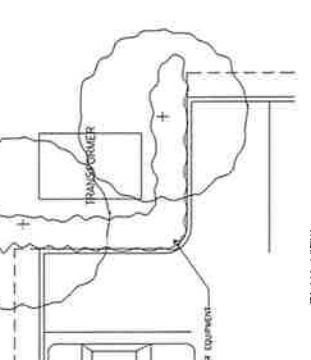
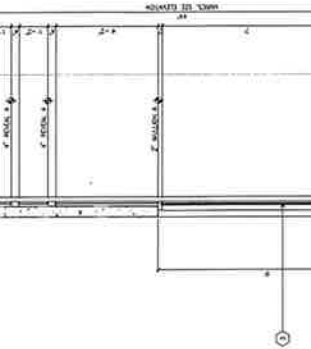
GROUND MOUNTED EQUIPMENT SCREENING



BIKE RACK DETAILS



TRASH ENCLOSURE GATE



WALL SECTION & WINDOWS

GROUND MOUNTED EQUIPMENT SCREENING

BIKE RACK DETAILS

TRASH ENCLOSURE GATE



HPA, Inc.  
18051 Transcom Drive, Suite #100  
Fremont, CA 94538  
Tel: 510-885-1770  
Fax: 510-885-1861  
Email: info@hpa.com

OWNER:



1545 FARADAY AVENUE  
CARLSBAD CA 92008  
Tel: 760-439-1000  
ATtn: MARK LAMBERT

Project  
CADO  
Menifee

KUFFEL ROAD AND WHEAT STREET  
MENIFEE, CA

Consultants:

WEISS and Associates  
CIVIL  
STRUCTURAL  
MECHANICAL  
PLUMBING  
ELECTRICAL  
LANDSCAPE  
PREFORMER  
SALISBURY

TIME SECTION

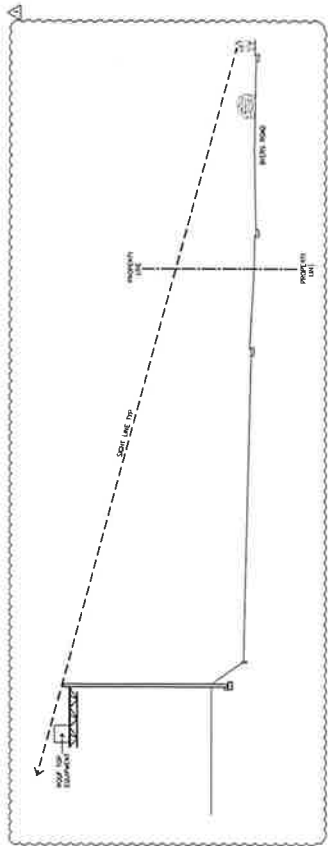
Project Number: 20175  
Drawn by: SM  
Date: 02/12/22  
Reviewed by: RYAN H  
Date: 02/12/22

Sheet

DAB-A4.2



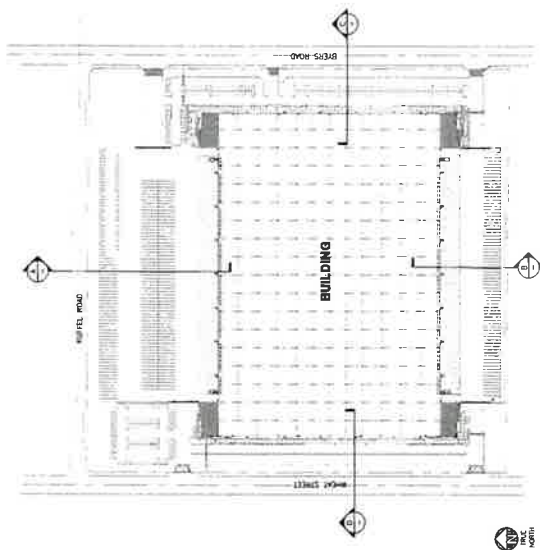
STREET SECTION - KUFFEL ROAD LINE OF SIGHT



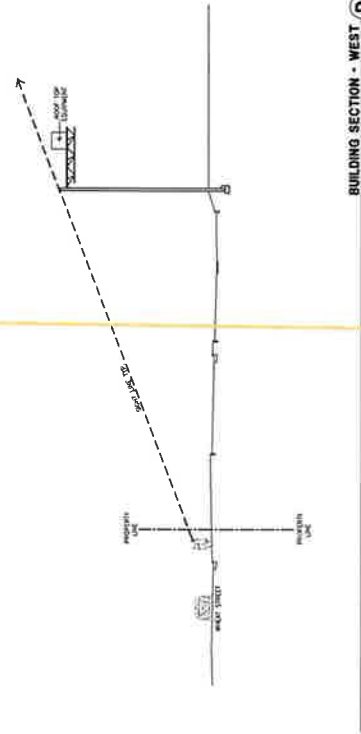
BUILDING SECTION - EAST



BUILDING SECTION - SOUTH



KEY PLAN



BUILDING SECTION - WEST



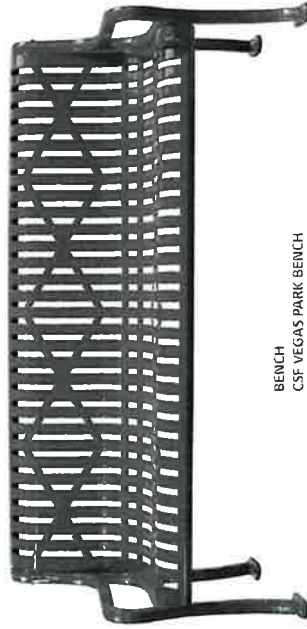
WALKWAY LIGHTS  
OCEANWALK SQUARE BOLLARD  
LED, SILVER METALLIC



WASTE RECEPTACLE  
QCP CORP.  
CALIFORNIA SQUARE OS-CAL2534W-C21  
FRENCH GRAY, GRAY LID.



BIKE RACK  
ULINE  
3-LOOP WAVE STYLE BIKE RACK  
BLACK



BENCH  
CSF VEGAS PARK BENCH  
GRANITE



GROUP TABLE WITH  
UMBRELLA (NOT SHOWN)  
QCP CORP  
NATURAL GRAY FINISH



HPA, INC.  
11821 Sandpoint Avenue, Ste. F100  
San Diego, CA 92121  
Tel: 619-593-1170  
Fax: 619-593-1171  
Email: info@hpa.com



Owner:  
1545 FIDELITY AVENUE  
CULVERSON, CA 92028  
Tel: 760-827-4825  
ATTC MARK KATZEN

Project:  
CADO  
Menifee

11821 Sandpoint Avenue, Ste. F100  
San Diego, CA 92121

Consultants:  
WEBB and Associates  
ARCHITECTURAL  
MECHANICAL  
ELECTRICAL  
LANDSCAPE  
PLANNING  
ENVIRONMENTAL  
ENGINEERING

Time: SITE ACCESSORIES PLANSET  
Project Number: 200705  
Drawn by: SH  
Date: 09/1/2007  
Revision:  
1. REVISION #1 09/1/2007

Sheet  
DAB-A4.3





Owner:



1545 FARADAY AVENUE  
CARLSBAD CA 92008  
tel: 760-827-6025  
ATTN: MARK HAYDEN

Project: CADO Menifee

QUIFFEL ROAD AND WHEAT STREET  
LYNDSEY, CA

**Consultants:**

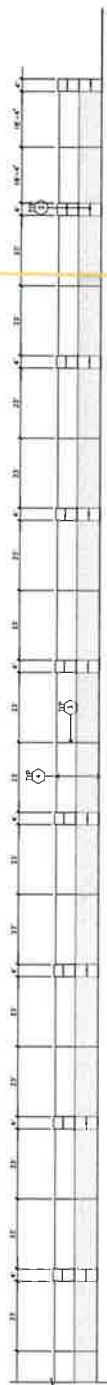
**CIVIL**  
**STRUCTURAL**  
**MECHANICAL**  
**PLUMBING**  
**ELECTRICAL**  
**ANOSCOPE**  
**LIFE PROTECTION**  
**TOOLS ENGINEER**

T/50: SIGHT LINE DIAGRAMS

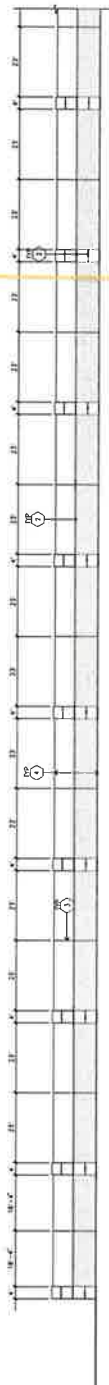
Project Number: 20075  
 Drawn by: SH  
 Date: 03/01/2022  
 Revision:

est:

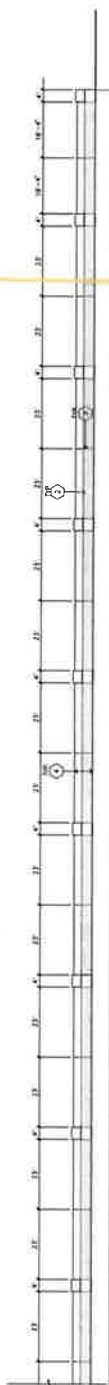
DAB-A4.4



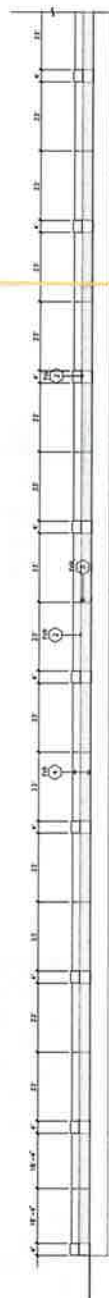
SCREEN WALL ELEVATION A (NORTH ELEVATION) A



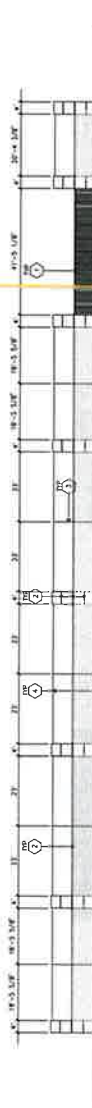
SCREEN WALL ELEVATION B (NORTH ELEVATION CONT.) **B**



SCREEN WALL ELEVATION C (SOUTH ELEVATION) C



SCREEN WALL ELEVATION D (SOUTH ELEVATION CONT.)

SCREEN WALL ELEVATION E (NORTHWEST) E  
SCALE 1/16" = 1'-0"

SCREEN WALL ELEVATION Q (SOUTHEAST) **Q**  
DATE 1/18/2017



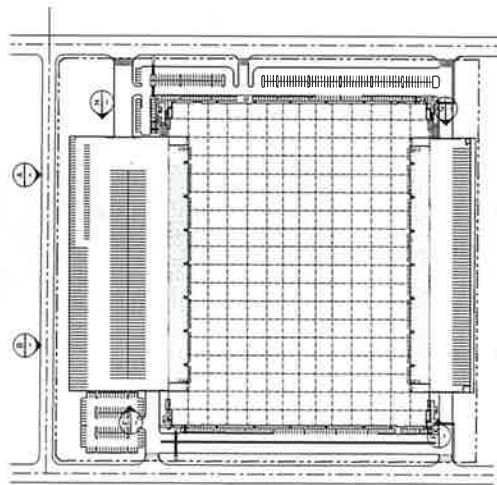
SCREEN WALL ELEVATION H (NORTHEAST)

## KEYNOTES - ELEVATIONS

- 1 8" HIGH METAL SLIDING GATES WITH 2"x4" PERIMETER FRAME AND HORIZONTAL SUPPORT
- 2 PAINT: NO-ODOR, PAINTED TO MATCH BUILDING
- 3 PAINT: JUNE
- 4 14" HIGH COMPOSITE 18.1-UP SCREEN WALL

## COLOR SCHEDULE - ELEVATIONS

- [illegible]



**KEY PLAN** **J**













HPNEWLOG-09.jpg

18871 Superior Ave  
Suite 400  
Oakville, ON L6M 4P6  
905-881-1179  
Fax 905-881-0811  
email info@hpa.ca



Owner

Copstone\_Logo.jpg

1545 PARKWAY AVENUE  
CARLSBAD CA 92008  
760-827-8023  
ART@COPSTONE.COM

Project:  
CADO  
Menifee

HAUFEL ROAD AND WHEAT STREET  
MENIFEE CA



Consultants:

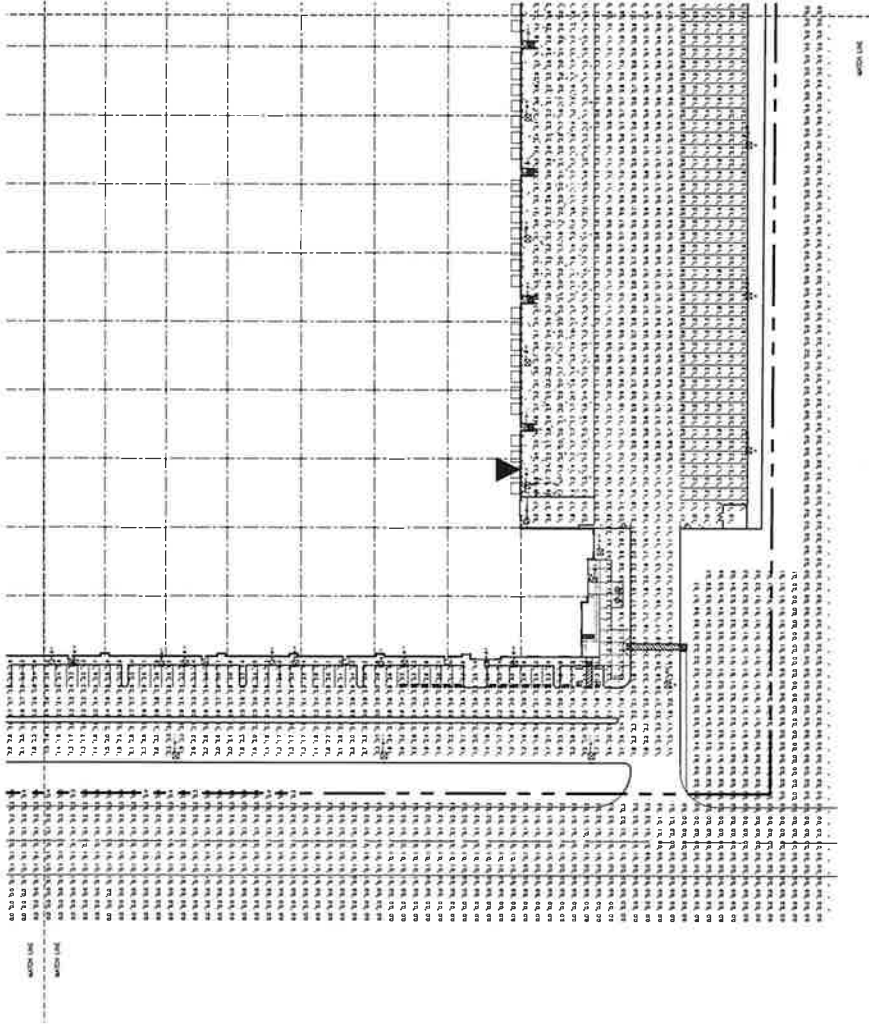
Civil / WEIR AND ASSOCIATES  
Mechanical / WEIR AND ASSOCIATES  
Electrical / WEIR AND ASSOCIATES  
Structural / WEIR AND ASSOCIATES  
SPE



Site PHOTOGRAPHIC STUDY

Project Number 20055  
Drawn by SH  
Date 02/1/2022  
Revised

Sheet  
FC-1C



SITE PHOTOMETRIC STUDY  
SCALE: 1"=40'-0" (8" NOT SCALE) (SHOWN, QUANT IN FEET)

H:\NEWLOG-09.jpg

1801 S. 10th Avenue, Ste. 100  
Tulsa, OK 74103  
Phone: 918.481.1172  
Fax: 918.481.1173  
Email: info@hennelogs.com  
Website: hennelogs.com

Owner:

Captone\_Logs.jpg

1801 S. 10th Avenue, Ste. 100  
Tulsa, OK 74103  
Phone: 918.481.1172  
Fax: 918.481.1173  
Email: info@hennelogs.com  
Website: hennelogs.com

Project:  
CADO  
Menitee

1801 S. 10th Avenue, Ste. 100  
Tulsa, OK 74103  
Phone: 918.481.1172  
Fax: 918.481.1173  
Email: info@hennelogs.com  
Website: hennelogs.com

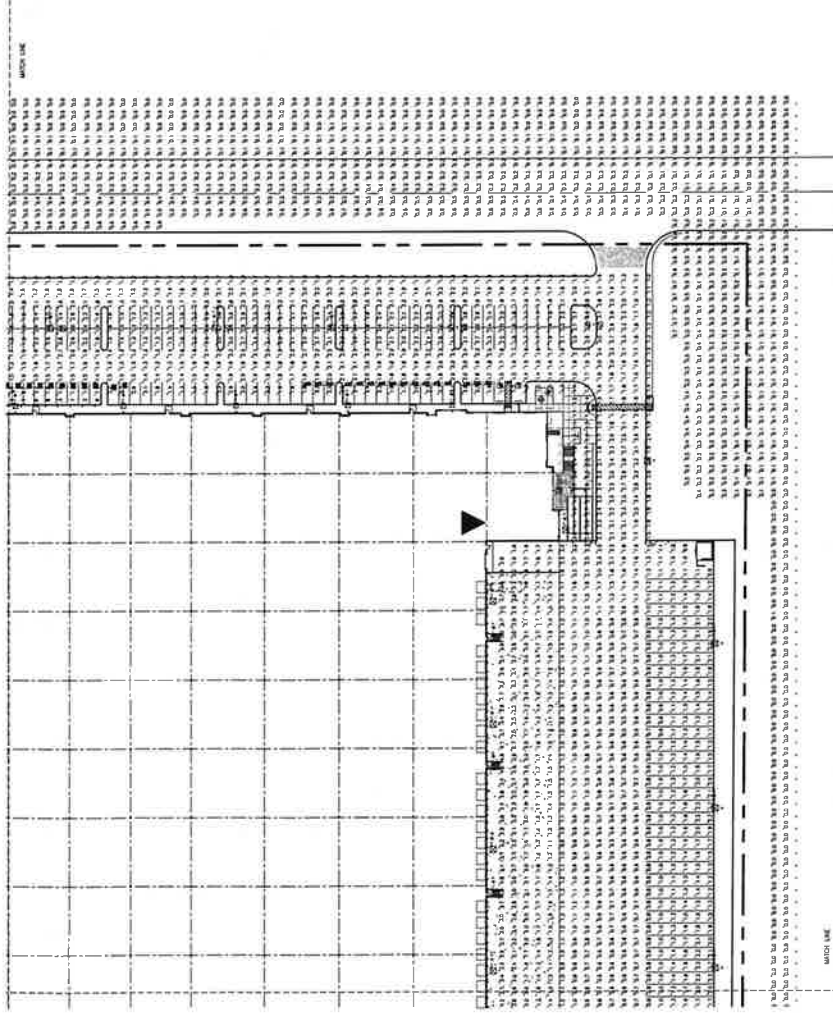
Consultants:

1801 S. 10th Avenue, Ste. 100  
Tulsa, OK 74103  
Phone: 918.481.1172  
Fax: 918.481.1173  
Email: info@hennelogs.com  
Website: hennelogs.com

Title: SITE PHOTOMETRIC STUDY

Project Number: 2005  
Drawn by: SH  
Date: 07/10/2005  
Revised:

Sheet  
FC-1D



SITE PHOTOMETRIC STUDY  
1" = 10'-0" OR AS SHOWN, SHOWN IN FEET

Symbol	Code	Color	Material	Notes
1	1	1	1	1
2	2	2	2	2
3	3	3	3	3
4	4	4	4	4
5	5	5	5	5
6	6	6	6	6
7	7	7	7	7
8	8	8	8	8
9	9	9	9	9
10	10	10	10	10
11	11	11	11	11
12	12	12	12	12
13	13	13	13	13
14	14	14	14	14
15	15	15	15	15
16	16	16	16	16
17	17	17	17	17
18	18	18	18	18
19	19	19	19	19
20	20	20	20	20
21	21	21	21	21
22	22	22	22	22
23	23	23	23	23
24	24	24	24	24
25	25	25	25	25
26	26	26	26	26
27	27	27	27	27
28	28	28	28	28
29	29	29	29	29
30	30	30	30	30
31	31	31	31	31
32	32	32	32	32
33	33	33	33	33
34	34	34	34	34
35	35	35	35	35
36	36	36	36	36
37	37	37	37	37
38	38	38	38	38
39	39	39	39	39
40	40	40	40	40
41	41	41	41	41
42	42	42	42	42
43	43	43	43	43
44	44	44	44	44
45	45	45	45	45
46	46	46	46	46
47	47	47	47	47
48	48	48	48	48
49	49	49	49	49
50	50	50	50	50
51	51	51	51	51
52	52	52	52	52
53	53	53	53	53
54	54	54	54	54
55	55	55	55	55
56	56	56	56	56
57	57	57	57	57
58	58	58	58	58
59	59	59	59	59
60	60	60	60	60
61	61	61	61	61
62	62	62	62	62
63	63	63	63	63
64	64	64	64	64
65	65	65	65	65
66	66	66	66	66
67	67	67	67	67
68	68	68	68	68
69	69	69	69	69
70	70	70	70	70
71	71	71	71	71
72	72	72	72	72
73	73	73	73	73
74	74	74	74	74
75	75	75	75	75
76	76	76	76	76
77	77	77	77	77
78	78	78	78	78
79	79	79	79	79
80	80	80	80	80
81	81	81	81	81
82	82	82	82	82
83	83	83	83	83
84	84	84	84	84
85	85	85	85	85
86	86	86	86	86
87	87	87	87	87
88	88	88	88	88
89	89	89	89	89
90	90	90	90	90
91	91	91	91	91
92	92	92	92	92
93	93	93	93	93
94	94	94	94	94
95	95	95	95	95
96	96	96	96	96
97	97	97	97	97
98	98	98	98	98
99	99	99	99	99
100	100	100	100	100

Symbol	Code	Color	Material	Notes
1	1	1	1	1
2	2	2	2	2
3	3	3	3	3
4	4	4	4	4
5	5	5	5	5
6	6	6	6	6
7	7	7	7	7
8	8	8	8	8
9	9	9	9	9
10	10	10	10	10
11	11	11	11	11
12	12	12	12	12
13	13	13	13	13
14	14	14	14	14
15	15	15	15	15
16	16	16	16	16
17	17	17	17	17
18	18	18	18	18
19	19	19	19	19
20	20	20	20	20
21	21	21	21	21
22	22	22	22	22
23	23	23	23	23
24	24	24	24	24
25	25	25	25	25
26	26	26	26	26
27	27	27	27	27
28	28	28	28	28
29	29	29	29	29
30	30	30	30	30
31	31	31	31	31
32	32	32	32	32
33	33	33	33	33
34	34	34	34	34
35	35	35	35	35
36	36	36	36	36
37	37	37	37	37
38	38	38	38	38
39	39	39	39	39
40	40	40	40	40
41	41	41	41	41
42	42	42	42	42
43	43	43	43	43
44	44	44	44	44
45	45	45	45	45
46	46	46	46	46
47	47	47	47	47
48	48	48	48	48
49	49	49	49	49
50	50	50	50	50
51	51	51	51	51
52	52	52	52	52
53	53	53	53	53
54	54	54	54	54
55	55	55	55	55
56	56	56	56	56
57	57	57	57	57
58	58	58	58	58
59	59	59	59	59
60	60	60	60	60
61	61	61	61	61
62	62	62	62	62
63	63	63	63	63
64	64	64	64	64
65	65	65	65	65
66	66	66	66	66
67	67	67	67	67
68	68	68	68	68
69	69	69	69	69
70	70	70	70	70
71	71	71	71	71
72	72	72	72	72
73	73	73	73	73
74	74	74	74	74
75	75	75	75	75
76	76	76	76	76
77	77	77	77	77
78	78	78	78	78
79	79	79	79	79
80	80	80	80	80
81	81	81	81	81
82	82	82	82	82
83	83	83	83	83
84	84	84	84	84
85	85	85	85	85
86	86	86	86	86
87	87	87	87	87
88	88	88	88	88
89	89	89	89	89
90	90	90	90	90
91	91	91	91	91
92	92	92	92	92
93	93	93	93	93
94	94	94	94	94
95	95	95	95	95
96	96	96	96	96
97	97	97	97	97
98	98	98	98	98
99	99	99	99	99
100	100	100	100	100

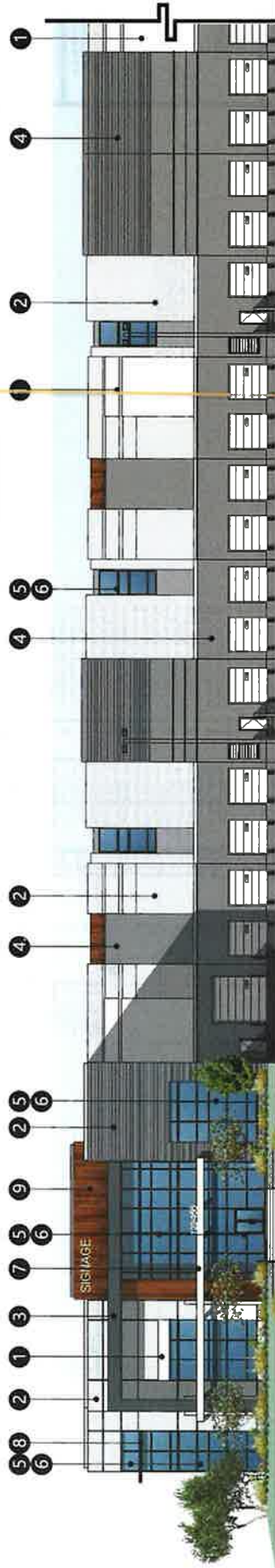


North Elevation



West Elevation

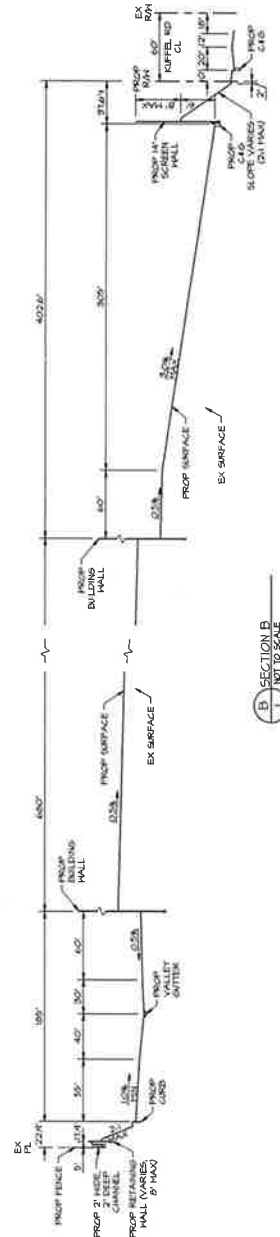
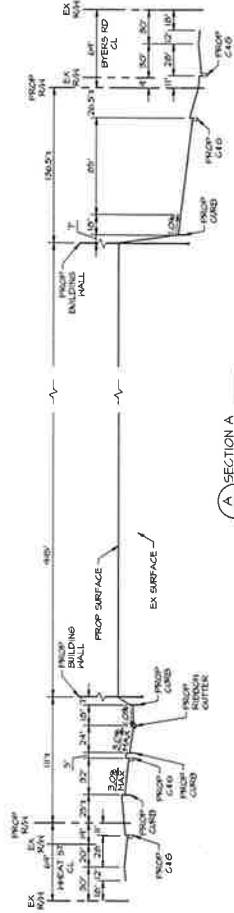
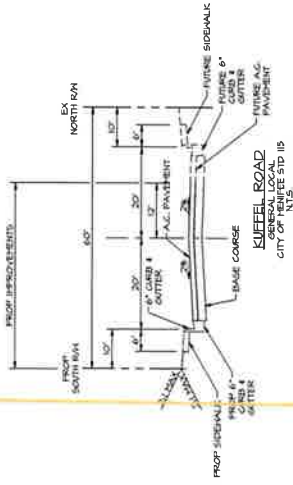
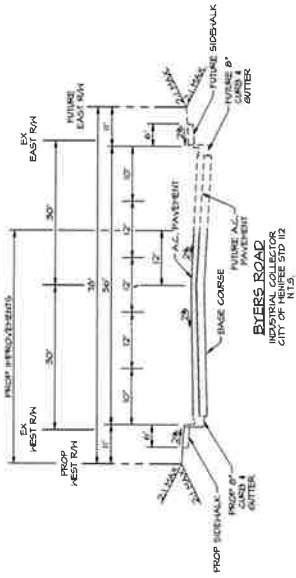
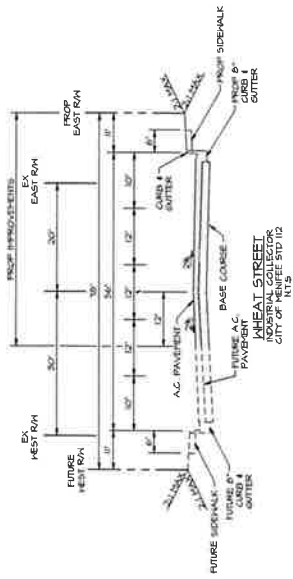
- |  |   |  |  |                                    |   |   |                          |   |
|--|---|--|--|------------------------------------|---|---|--------------------------|---|
| 1  | 2   | 3  | 4  | 5                                  | 6   | 7   | 8                        | 9   |
| <p>Sherrin Williams<br/>SW 7005<br/>Pure White</p> | <p>Sherrin Williams<br/>SW 7071<br/>Gray Screen</p> | <p>Sherrin Williams<br/>SW 7075<br/>Web Gray</p> | <p>Sherrin Williams<br/>SW 7074<br/>Software</p> | <p>Blue Reflective<br/>GLAZING</p> | <p>Aluminum<br/>Black Anodized<br/>MULLIONS</p> | <p>Sherrin Williams<br/>Acrylic Enamel<br/>High Gloss/High Performance<br/>in color: SW 7005 PURE WHITE<br/>@Metal CANOPY</p> | <p>Thin Black CANOPY</p> | <p>Acacia Wood - Stained Walnut<br/>Note: Wood must be milled "L"<br/>boards and be milled length<br/>Size: 1"x6"x16'</p> |



Enlarged View of North Elevation







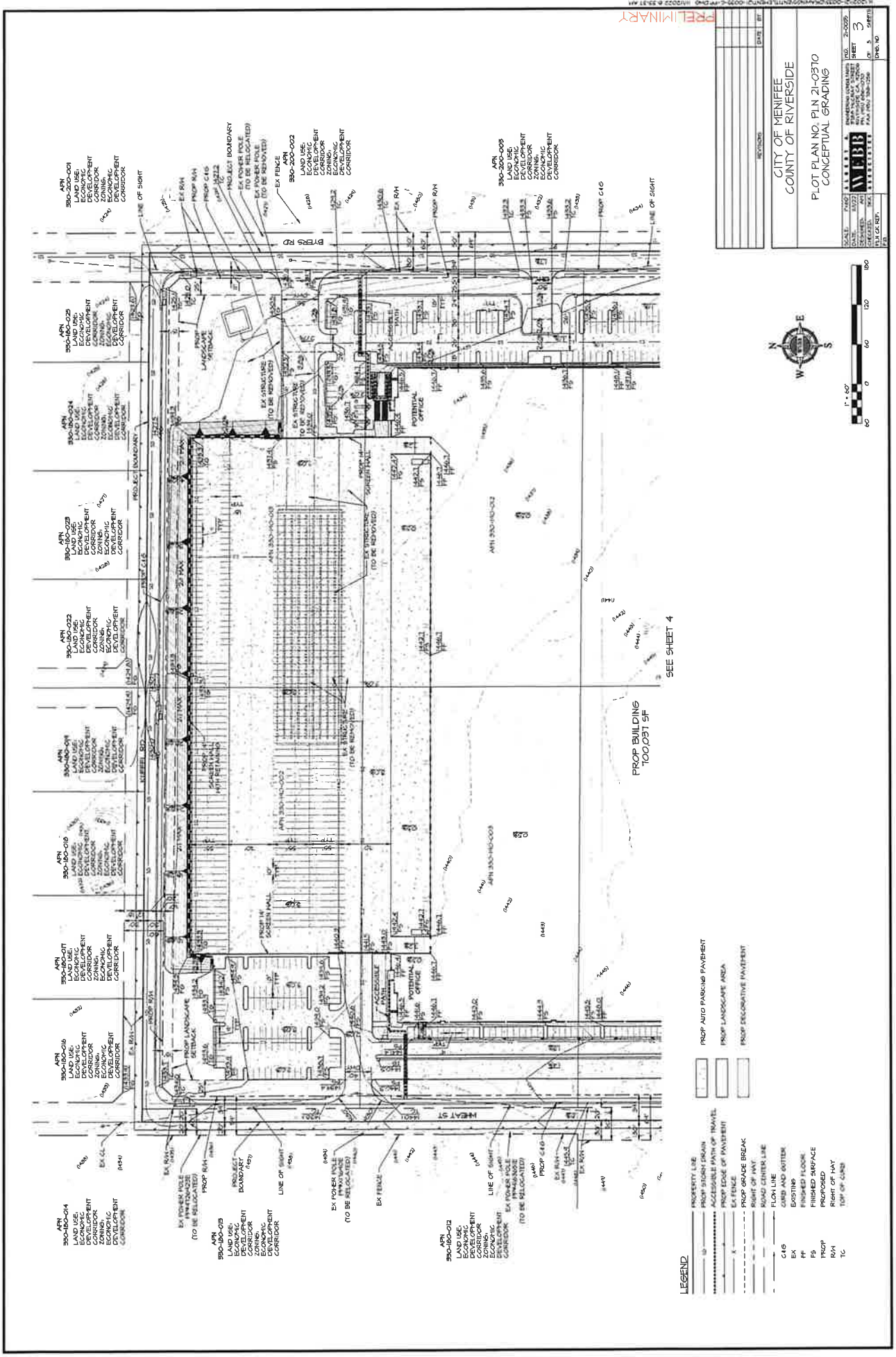
PRELIMINARY

NO.	DATE	REVISION
1	11/11/11	1.0
2	11/11/11	2.0
3	11/11/11	3.0
4	11/11/11	4.0
5	11/11/11	5.0
6	11/11/11	6.0
7	11/11/11	7.0
8	11/11/11	8.0
9	11/11/11	9.0
10	11/11/11	10.0

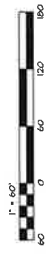
CITY OF MENIFEE  
COUNTY OF RIVERSIDE

PLOT PLAN NO. PLN 21-0370  
SECTIONS

SCALE	1"=100'	DATE	11/22	BY	WEBB	CHECKED	SM	DATE	11/22	BY	WEBB	CHECKED	SM
ENGINEERING CONSULTANTS 3700 PULASKI STREET N. W. 4008 N. W. 4008-010 P.O. BOX 388-128													
P.L.S. C.D. REF. P.B.													
P.L.S. NO.													
SHEET 2													
P.L.S. NO.													



- LEGEND**
- PROPERTY LINE
  - PROPOSED FRONT YARD ACCESSIBLE PATH OF TRAVEL
  - PROPOSED SIDE OF PAVEMENT
  - EX FENCE
  - PROPOSED GRADE BREAK
  - RIGHT OF WAY
  - ROAD CENTER LINE
  - FLOW LINE
  - C&G AND GUTTER
  - EXISTING FLOOR
  - PROPOSED FINISHED SURFACE
  - PROPOSED
  - RIGHT OF WAY
  - TOP OF CURB
  - PROPOSED AUTO PARKING PAVEMENT
  - PROPOSED LANDSCAPE AREA
  - PROPOSED DECORATIVE PAVEMENT



CITY OF MENIFEE	
COUNTY OF RIVERSIDE	
PLOT PLAN NO. PLN 21-0370	
CONCEPTUAL GRADING	
DATE: 03/22/2021	SHEET: 3
DESIGNED BY: [Signature]	OF: 5
SCALE: 1"=40'	DATE: 03/22/2021
PROJECT: [Project Name]	BY: [Designer Name]
FILE NO. 21-0370	DATE: 03/22/2021

PRELIMINARY











## PROPERTY LINE

- EX 4.3 QAD


$$I^* = \{\infty\}$$
CITY OF MENIFEE

CARBSTONE - MENIEFF

TENTATIVE PARCEL MAP NO. 38139

## SCHEDULE "E"

100

[illegible]

**WEBB**  
SOUTHERN CALIF. 42504  
PH (951) 266-1930

AGE	DATE	FAV FOR 100-125	OF 3
			DMS, H

[illegible]