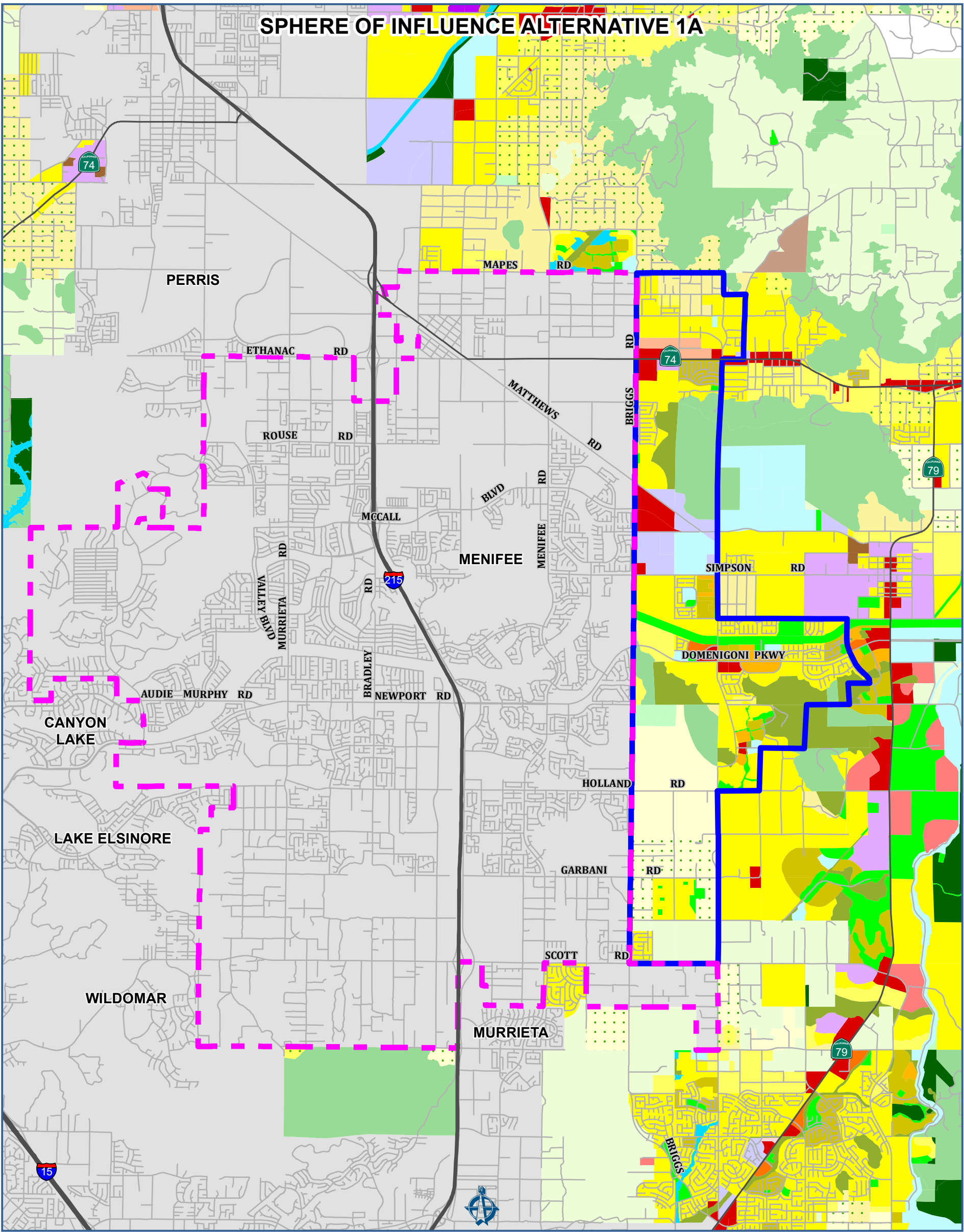


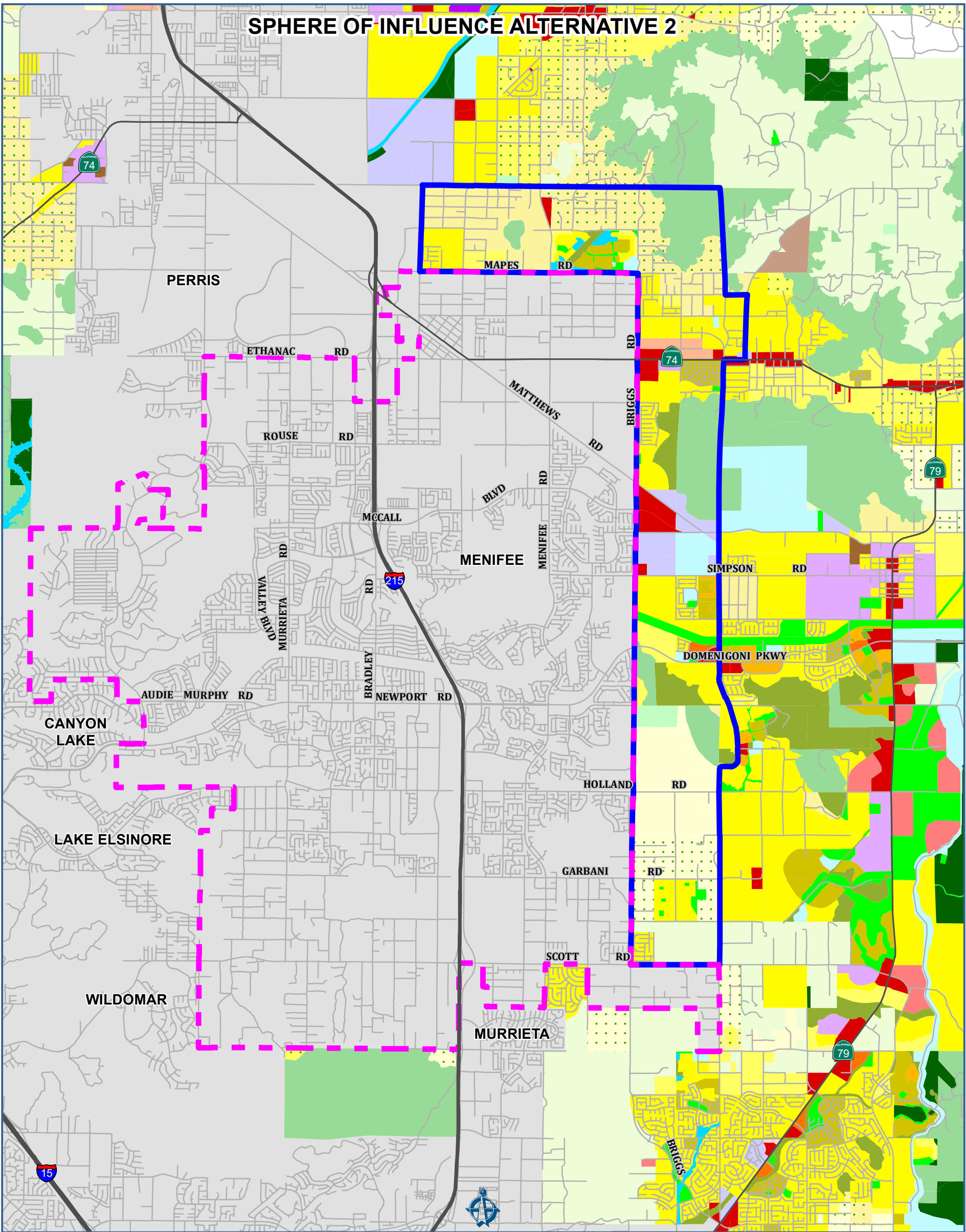
GENERAL PLAN LAND USE

Sphere Of Influence Option	Very Low Density Residential	Commercial Retail	Public Facilities	Conservation Habitat
Menifee City Boundary	Low Density Residential	Commercial Tourist	Mixed Use Area	Open Space Recreation
RIVERSIDE COUNTY	Medium Density Residential	Commercial Office	Rural Residential	Open Space Rural
Rural Community - Estate Density Residential	Medium High Density Residential	Community Center	Rural Mountainous	Water
Rural Community - Very Low Density Residential	High Density Residential	Light Industrial	Rural Desert	Mineral Resources
Rural Community - Low Density Residential	Very High Density Residential	Heavy Industrial	Agriculture	Indian Lands
Estate Density Residential	Highest Density Residential	Business Park	Conservation	City
				Freeway



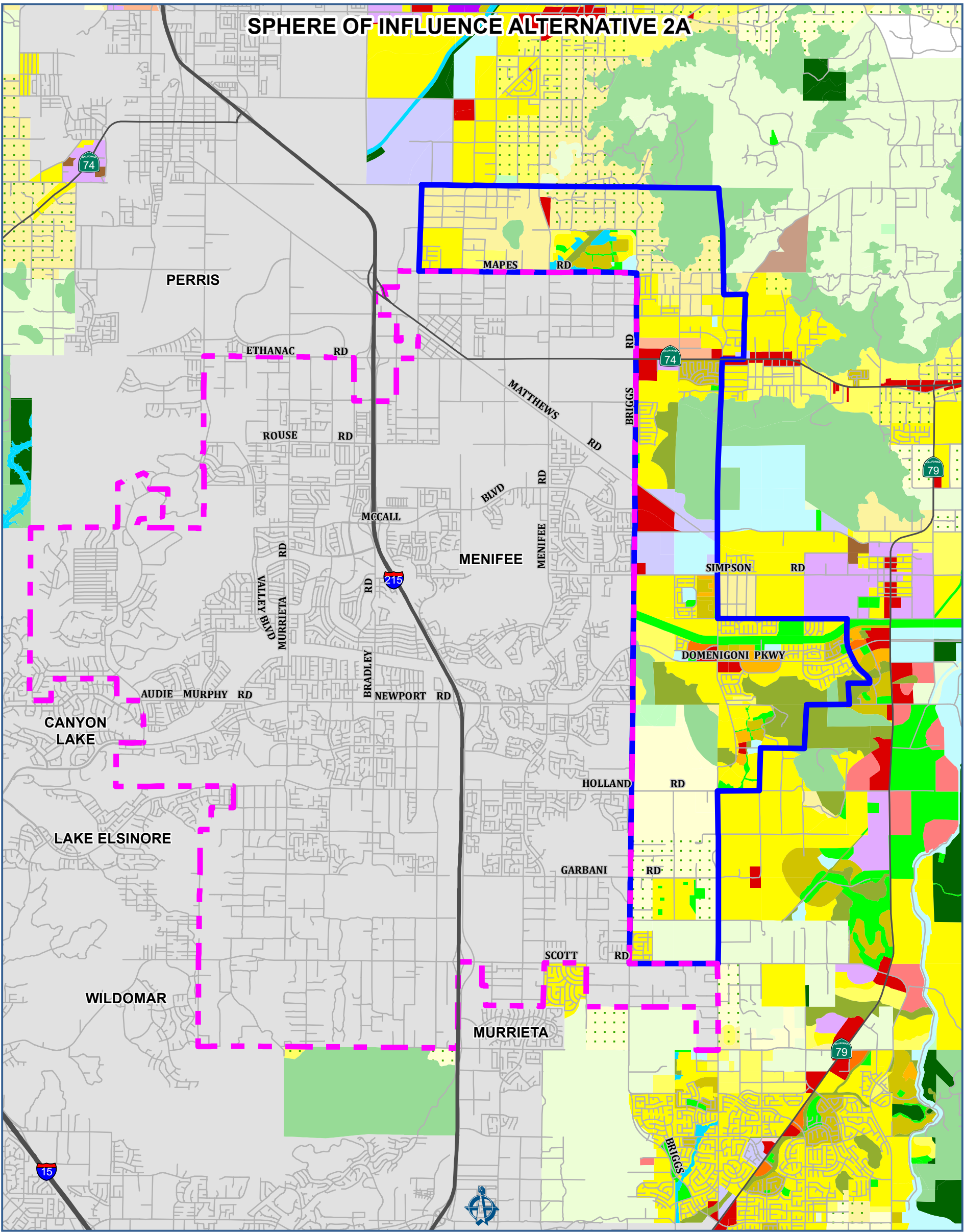
GENERAL PLAN LAND USE

Sphere Of Influence Option	Very Low Density Residential	Commercial Retail	Public Facilities	Conservation Habitat
Menifee City Boundary	Low Density Residential	Commercial Tourist	Mixed Use Area	Open Space Recreation
RIVERSIDE COUNTY	Medium Density Residential	Commercial Office	Rural Residential	Open Space Rural
Rural Community - Estate Density Residential	Medium High Density Residential	Community Center	Rural Mountainous	Water
Rural Community - Very Low Density Residential	High Density Residential	Light Industrial	Rural Desert	Mineral Resources
Rural Community - Low Density Residential	Very High Density Residential	Heavy Industrial	Agriculture	Indian Lands
Estate Density Residential	Highest Density Residential	Business Park	Conservation	City
				Freeway



GENERAL PLAN LAND USE

Sphere Of Influence Option	Very Low Density Residential	Commercial Retail	Public Facilities	Conservation Habitat
Menifee City Boundary	Low Density Residential	Commercial Tourist	Mixed Use Area	Open Space Recreation
RIVERSIDE COUNTY	Medium Density Residential	Commercial Office	Rural Residential	Open Space Rural
Rural Community - Estate Density Residential	Medium High Density Residential	Community Center	Rural Mountainous	Water
Rural Community - Very Low Density Residential	High Density Residential	Light Industrial	Rural Desert	Mineral Resources
Rural Community - Low Density Residential	Very High Density Residential	Heavy Industrial	Agriculture	Indian Lands
Estate Density Residential	Highest Density Residential	Business Park	Conservation	City
				Freeway



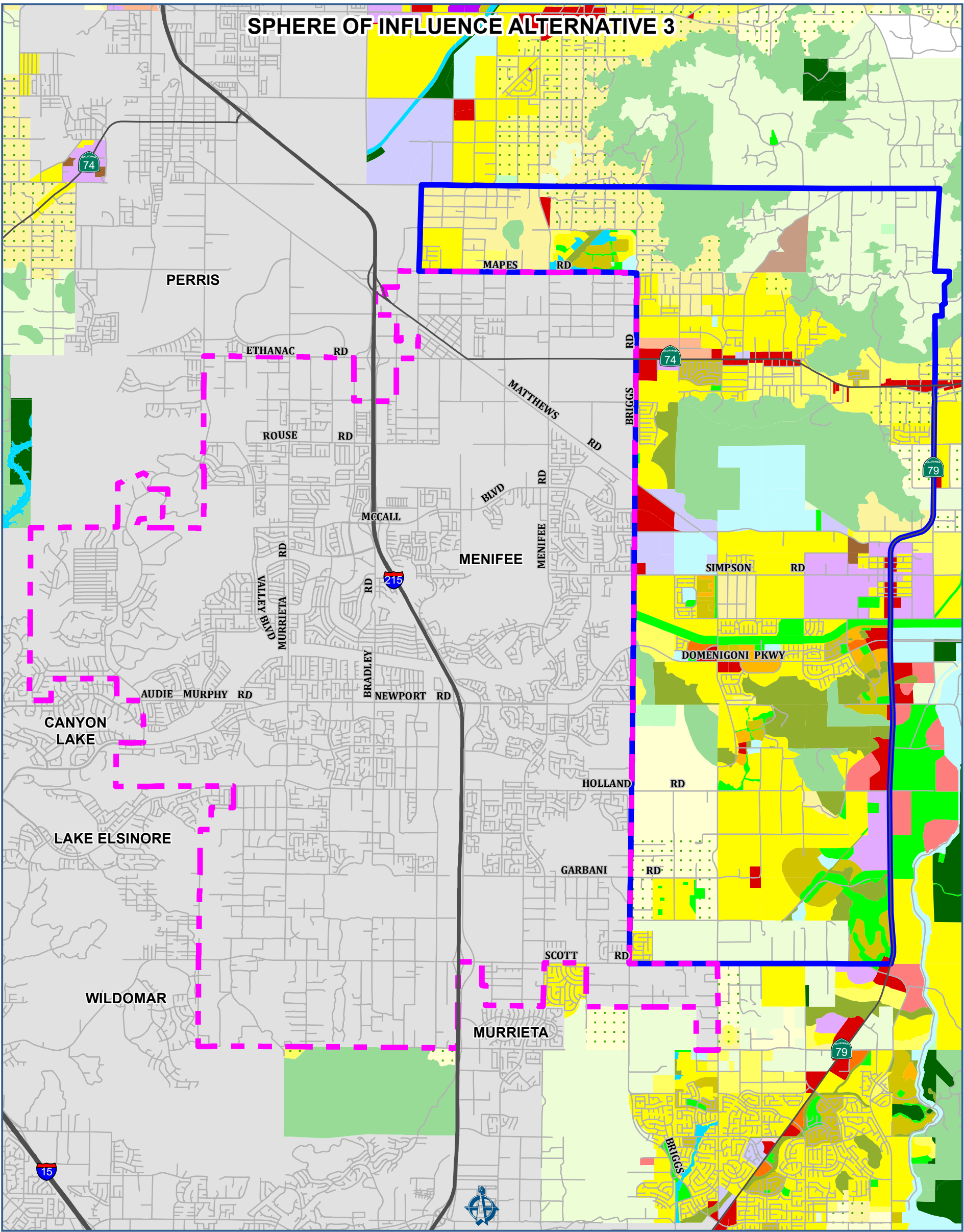
RIVERSIDE COUNTY

- Rural Community - Estate Density Residential
- Rural Community - Very Low Density Residential
- Rural Community - Low Density Residential
- Estate Density Residential

SPICER CONSULTING GROUP

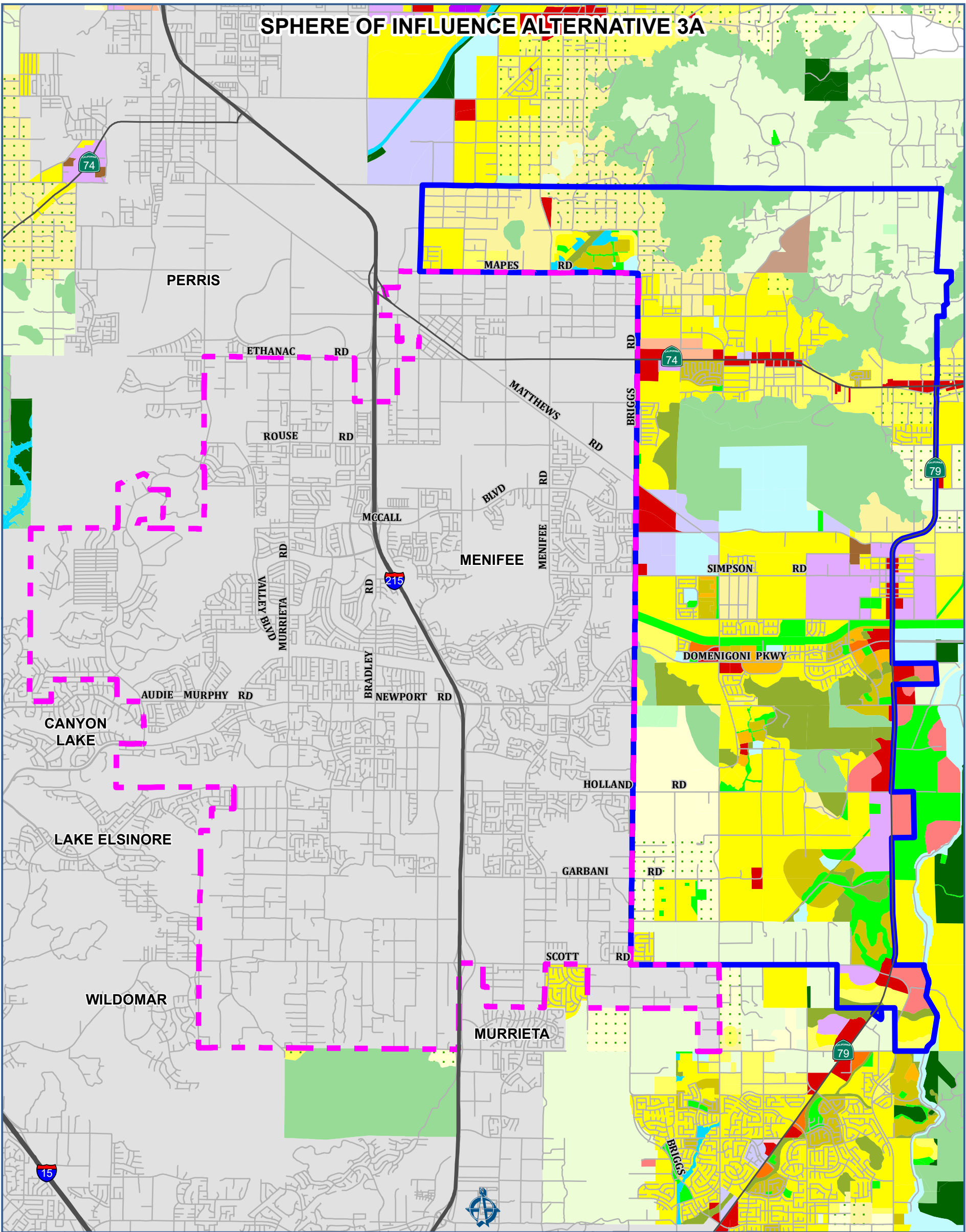
0 2,500 5,000 10,000 Feet

MENIFEE
New. Better. Best.



GENERAL PLAN LAND USE

Sphere Of Influence Option	Very Low Density Residential	Commercial Retail	Public Facilities	Conservation Habitat
Menifee City Boundary	Low Density Residential	Commercial Tourist	Mixed Use Area	Open Space Recreation
RIVERSIDE COUNTY	Medium Density Residential	Commercial Office	Rural Residential	Open Space Rural
Rural Community - Estate Density Residential	Medium High Density Residential	Community Center	Rural Mountainous	Water
Rural Community - Very Low Density Residential	High Density Residential	Light Industrial	Rural Desert	Mineral Resources
Rural Community - Low Density Residential	Very High Density Residential	Heavy Industrial	Agriculture	Indian Lands
Estate Density Residential	Highest Density Residential	Business Park	Conservation	City
				Freeway



GENERAL PLAN LAND USE

Sphere Of Influence Option	Very Low Density Residential	Commercial Retail	Public Facilities	Conservation Habitat
Menifee City Boundary	Low Density Residential	Commercial Tourist	Mixed Use Area	Open Space Recreation
RIVERSIDE COUNTY	Medium Density Residential	Commercial Office	Rural Residential	Open Space Rural
Rural Community - Estate Density Residential	Medium High Density Residential	Community Center	Rural Mountainous	Water
Rural Community - Very Low Density Residential	High Density Residential	Light Industrial	Rural Desert	Mineral Resources
Rural Community - Low Density Residential	Very High Density Residential	Heavy Industrial	Agriculture	Indian Lands
Estate Density Residential	Highest Density Residential	Business Park	Conservation	City
				Freeway