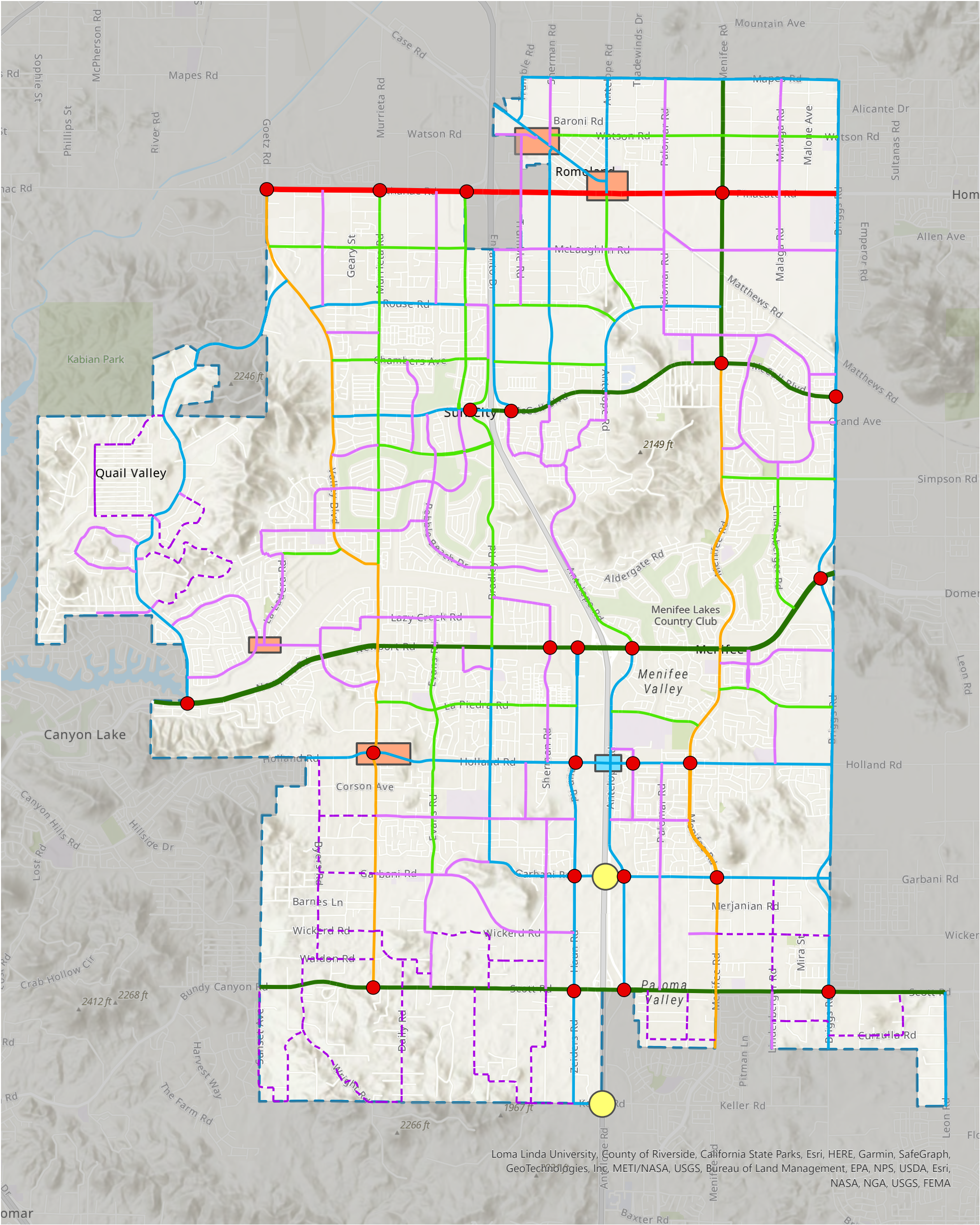


Resolution Exhibit - B
Proposed Circulation Element Exhibit C-3
Roadway Network Map

EXHIBIT C-3
ROADWAY NETWORK



- Expressway (6 to 8 Lanes, Divided)
- Urban Arterial (6 Lanes, Divided)
- Arterial (4 Lanes, Divided)
- Major (4 Lanes, Divided)
- Mountain Arterial (4 Lanes, Undivided)
- Secondary (4 Lanes, Undivided)
- Collector / Interconnected Local (2 Lanes)
- Rural Collector / Interconnected Local (2 Lanes)
- Future Freeway Interchange
- Enhanced Intersection - Additional lanes / Right-of-Way required within 600 feet of the intersection
- Connectivity Analysis Zone - Roadway alignments, intersection geometrics and traffic control features subject to additional assessment
- Future Freeway Overcrossing
- City Boundary