

PROPOSED BOUNDARY MAP
COMMUNITY FACILITIES DISTRICT NO. 2023-2
(CIMARRON RIDGE)
CITY OF MENIFEE,
COUNTY OF RIVERSIDE, STATE OF CALIFORNIA

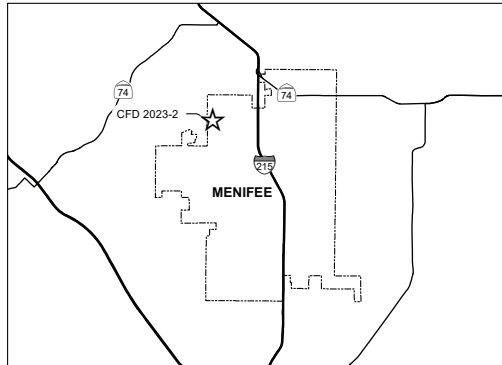
SHEET 1 OF 3 SHEETS

I HEREBY CERTIFY THAT THE WITHIN MAP SHOWING PROPOSED BOUNDARIES OF COMMUNITY FACILITIES DISTRICT NO. 2023-2 (CIMARRON RIDGE), CITY OF MENIFEE, COUNTY OF RIVERSIDE, STATE OF CALIFORNIA, WAS APPROVED BY THE CITY COUNCIL OF THE CITY OF MENIFEE AT A REGULAR MEETING THEREOF, HELD ON ____ DAY OF ____, 20____, BY RESOLUTION NO. _____

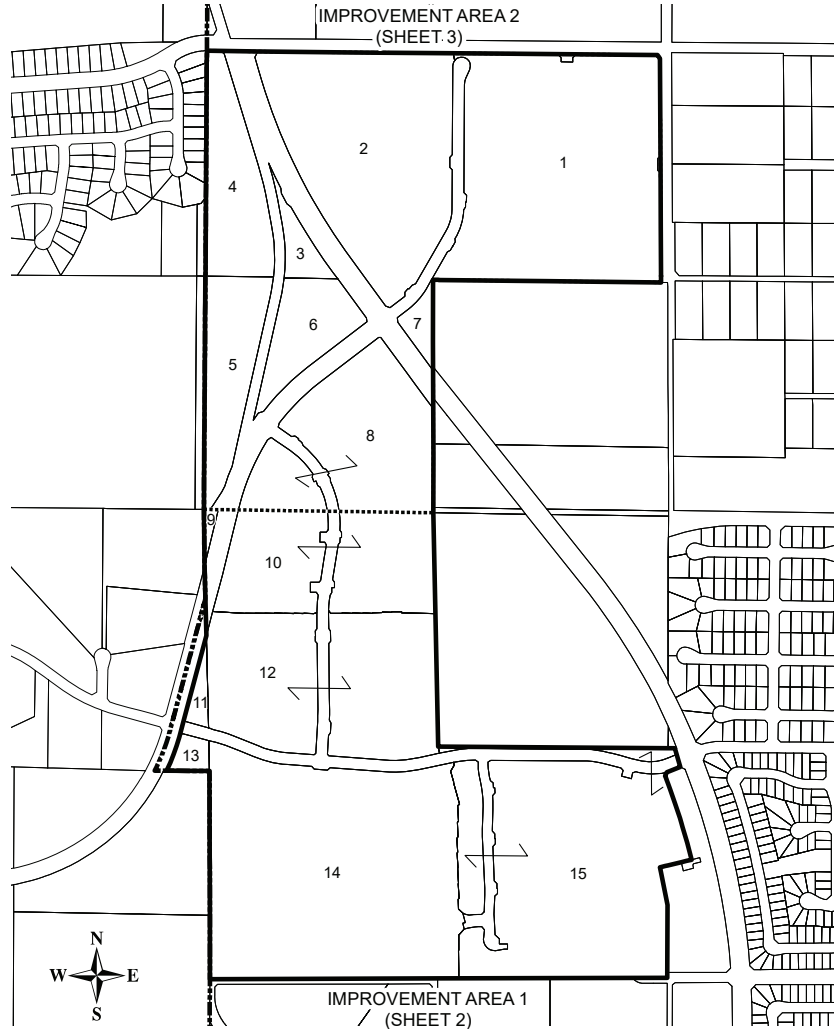
CITY CLERK
CITY OF MENIFEE

FILED IN THE OFFICE OF THE CITY CLERK, CITY OF MENIFEE,
THIS ____ DAY OF ____, 20____.

CITY CLERK
CITY OF MENIFEE



THIS BOUNDARY MAP CORRECTLY SHOWS THE BOUNDARIES OF THE COMMUNITY FACILITIES DISTRICT. FOR DETAILS CONCERNING THE LINES AND DIMENSIONS OF LOTS OR PARCEL REFER TO THE COUNTY ASSESSOR'S MAPS FOR FISCAL YEAR 2022-23.



RECORDED THIS ____ DAY OF _____, 20____ AT
THE HOUR OF ____ O'CLOCK ____ M IN BOOK ____
PAGE ____ OF MAPS OF ASSESSMENT AND COMMUNITY
FACILITIES DISTRICTS IN THE OFFICE OF THE COUNTY
RECORDER, IN THE COUNTY OF RIVERSIDE, STATE OF
CALIFORNIA.

FEE: _____ NO.: _____
PETER ALDANA, ASSESSOR, COUNTY CLERK, RECORDER

BY: _____
DEPUTY

REF NUM	APN
1	330-220-016
2	330-220-017
3	330-220-018
4	330-220-019
5	330-230-045
6	330-230-044
7	330-230-043
8	330-230-042
9	335-070-058
10	335-070-057
11	335-430-028
12	335-070-056
13	335-430-027
14	335-070-055
15	335-070-054

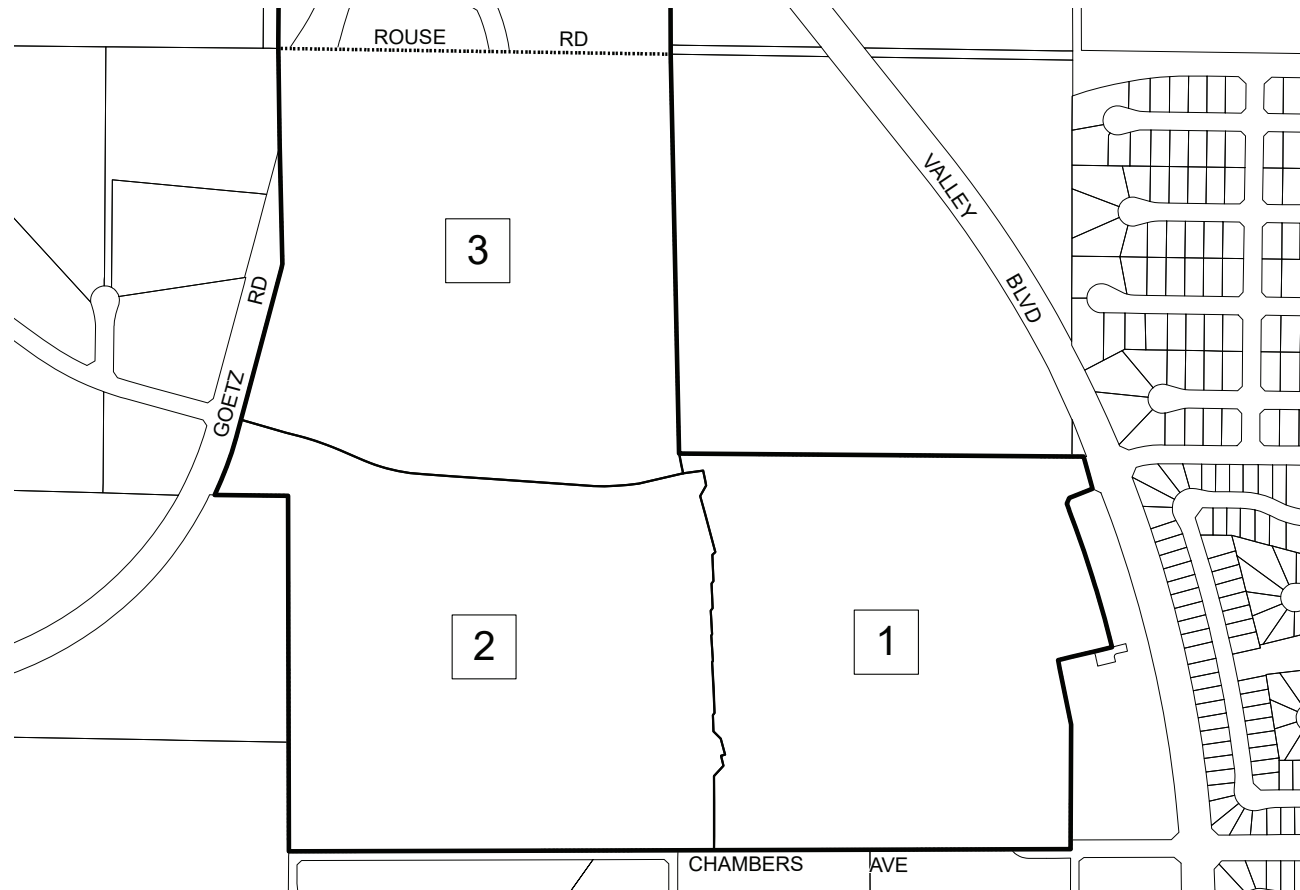
LEGEND

- ____ PARCEL LINE
- IMPROVEMENT AREA BOUNDARY
- ____ CFD BOUNDARY
- CITY BOUNDARY
- XXX-XXX-XXX ASSESSOR PARCEL NUMBER
- 1 MAP REFERENCE NUMBER

0 500 1,000 2,000 Feet

PROPOSED BOUNDARY MAP
COMMUNITY FACILITIES DISTRICT NO. 2023-2
(CIMARRON RIDGE)
CITY OF MENIFEE,
COUNTY OF RIVERSIDE, STATE OF CALIFORNIA

SHEET 2 OF 3 SHEETS



IMPROVEMENT AREA 1

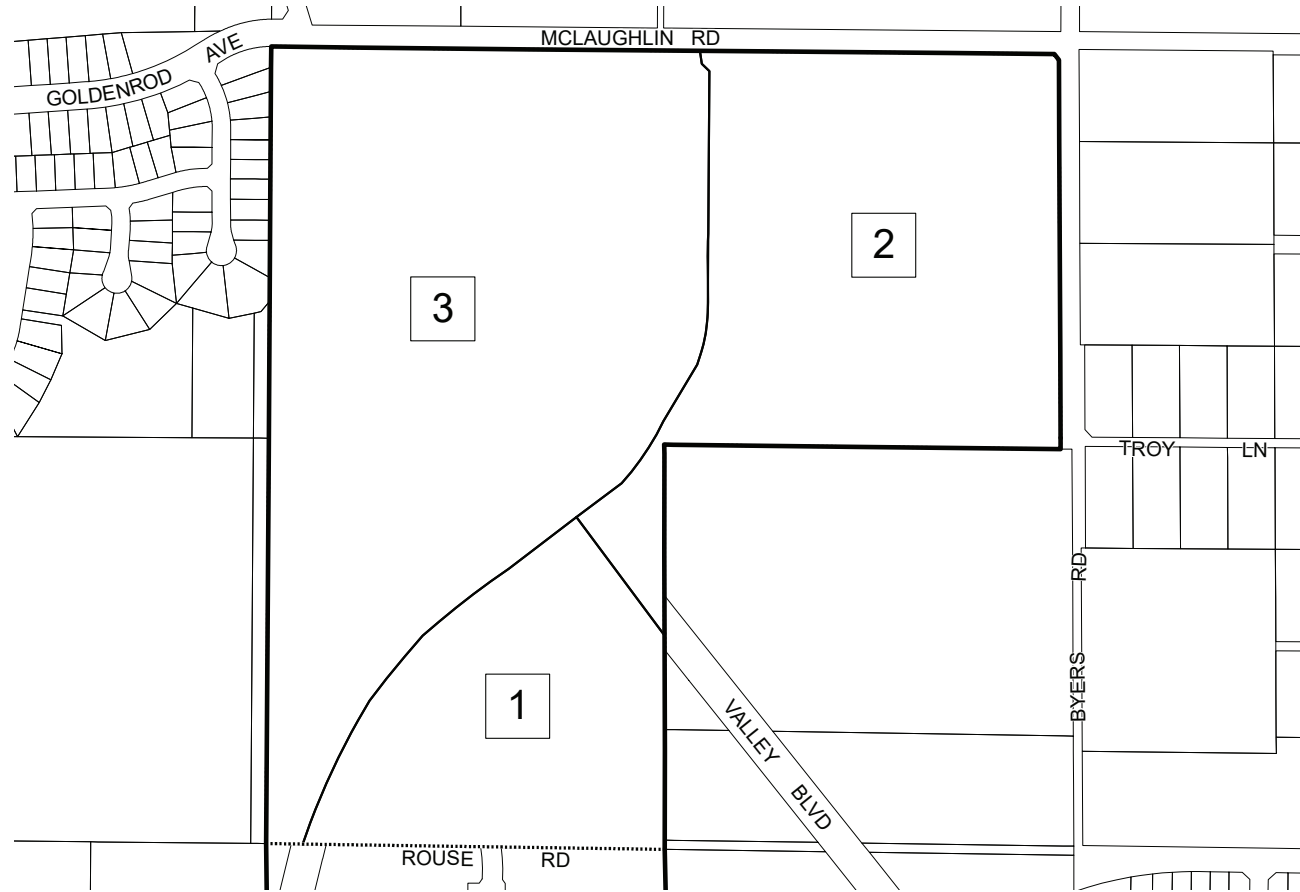
0 375 750 1,500 Feet



LEGEND

- CFD BOUNDARY
- IMPROVEMENT AREA BOUNDARY
- TAX ZONE BOUNDARY
- 1 TAX ZONE

PROPOSED BOUNDARY MAP
COMMUNITY FACILITIES DISTRICT NO. 2023-2
(CIMARRON RIDGE)
CITY OF MENIFEE,
COUNTY OF RIVERSIDE, STATE OF CALIFORNIA



IMPROVEMENT AREA 2

LEGEND

- CFD BOUNDARY
- IMPROVEMENT AREA BOUNDARY
- TAX ZONE BOUNDARY
- 1 TAX ZONE



SPICER CONSULTING
GROUP